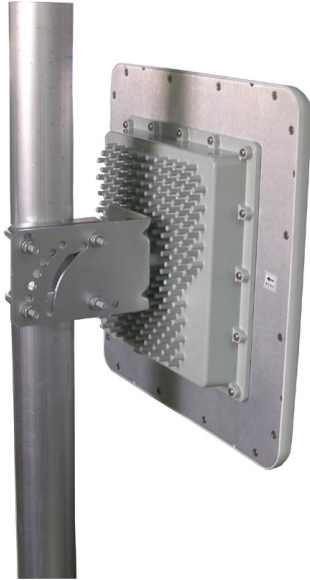


TDJ-2400BKT-C

2.4GHz Broadband Low Profile

Panel Antenna

Technical Sheet

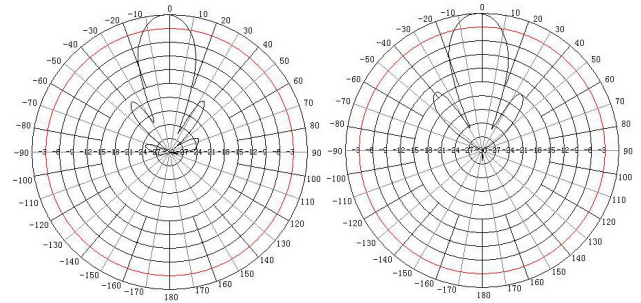


Applications

- 2.4GHz WLAN System
- Point to Point or Point to Multi-point Applications
- Backhaul/Client Antenna

Features

- High Gain, Low VSWR
- Light Weight, Small Size, Low Profile
- Antisepsis
- Supplied with Mast Mounting Kit
- Equipment Cavity Inside



H Plane

E Plane

Specifications

Model	TDJ-2400BKT-C
Freq.Range-MHz	2400-2483
Gain-dBi	18
Ver.Beamwidth-°	20
Hor.Beamwidth-°	20
VSWR	≤1.5
F/B Ratio-dB	≥28
Impedance-Ω	50
Polarization	Vertical or Horizontal
Max.Power-W	50
Connector	SMA Male or Customized
Dimensions-mm	305×305×25
Weight-Kg	2.6(include the bracket)
Mounting	Pole
Pole Diameter-mm	φ40-50

Installation Sketch

