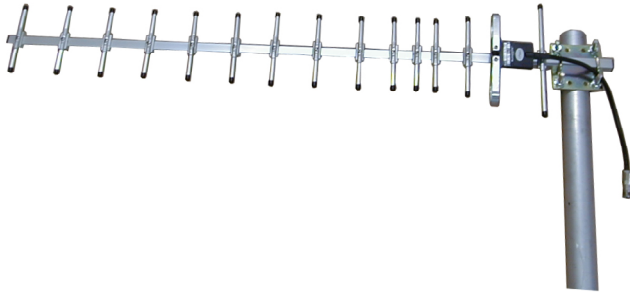


# TDJ-1500ACY15

## Directional Yagi Antenna

### Technical Sheet



#### Applications

- 1400~1550MHz band
- Wireless image transmission system
- Point to multipoint system
- Client antenna

#### Features

- High gain, High F/B Ratio
- Long-distance communication, strong anti-jamming ability
- High quality aluminum alloy material
- The connector with a pigtail

#### Specifications

Model	TDJ-1500ACY15
Elements	15
Freq.Range-MHz	1400 to 1550
Bandwidth-MHz	150
Gain-dBi	13
Ver.Beamwidth-°	30
Hor.Beamwidth-°	30
F/B Ratio-dB	≥18
VSWR	≤1.5
Impedance-Ω	50
Polarization	Vertical or horizontal
Max.Power-W	100
Connector	N female or customized
Length-cm	99
Weight-Kg	0.68
Mast Diameter-mm	φ 40 to 50

#### Installation Sketch

