



TDJ-0738DSK-M

**Broadband Directional Antenna
Technical Sheet**



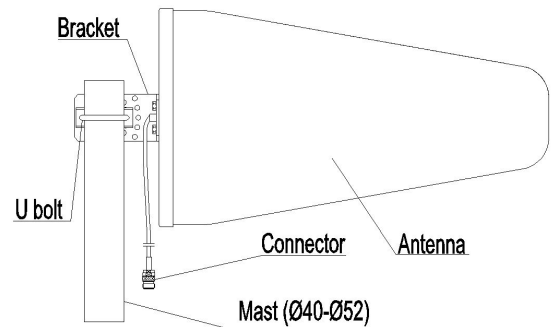
Features

- GSM/CDMA/WLAN/3G/4G/5G
- Wide band with coverage of common systems 698-960/1710-2700/3300-3800 MHz.
- Light weight and small size.
- UV Stable HIPS radome .

| Electrical specifications | TDJ-0738DSK-M | | |
|--|---------------|-----------|-----------|
| Frequency range (MHz) | 698~960 | 1710~2700 | 3300~3800 |
| Polarization | Vertical | | |
| Gain (dBi) | 9±1 | 9±1 | 9±1 |
| Hor. Beam width (°) | 85±15 | 80±15 | 75±15 |
| Ver. Beam width (°) (Typical value) | 60 | 65 | 60 |
| VSWR | ≤1.5 | | |
| Front-to-back ratio (dB) | ≥15 | | |
| Impedance (Ω) | 50 | | |
| Intermodulation IM3 (2×33dBm carrier) | ≤-140dBc | | |
| Maximum power (W) | 50 | | |

| Mechanical specifications | |
|----------------------------------|------------------------|
| Connector | N Female or customized |
| Height/width/depth (mm) | (512×210×64) ±1.5 |
| Weight (kg) | 1 (Include bracket) |
| Radome material | HIPS |
| Radome color | White |
| Mounting | Mast |
| Operating temperature (°C) | -40~60 |
| Application | outdoor |

Installation Sketch



Note:When installing, you should let the side with a little hole face down to prevent the antenna radome from water.