

**KBT**

## 698~960/1710~2700MHz 85°/90° 9/10dBi Logarithmic Periodic Directional Antenna

**TDJ-0727DSFL-D****Application**

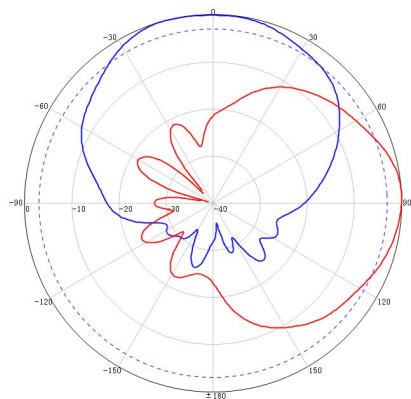
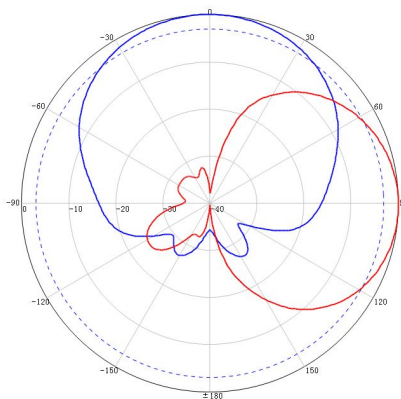
Used in 2G/3G/4G/WLAN system

**Electrical specifications**

Frequency range (MHz)	698~806	806~960	1710~2700
Polarization	Vertical		
Gain (dBi)	9±1		10±1
Horizontal beam width (°)	85±15		90±15
Vertical beam width (°)	65		70
Front-to-back ratio (dB)	≥15		
Impedance (Ω)	50		
VSWR	≤2.0		≤1.5
Maximum power (W)	50		
Lighting protection	DC Ground		

**Mechanical specifications**

Connector	N Female
Connector position	Bottom
Antenna size (mm)	(442*210*65) ±1.5
Packing size (mm)	488*225*88
Weight (kg)	1 (Include bracket)
Radome material	ABS
Radome color	White
Operating temperature (°C)	-40~60
Application	Outdoor
Mechanical tilt (°)	0~60
Rated wind velocity (m/s)	55
Suitable pole diameter (mm)	Φ25-Φ50
Mounting kit	JM-TA

**698~960MHz Typical pattern:****1710~2700MHz Typical pattern:**

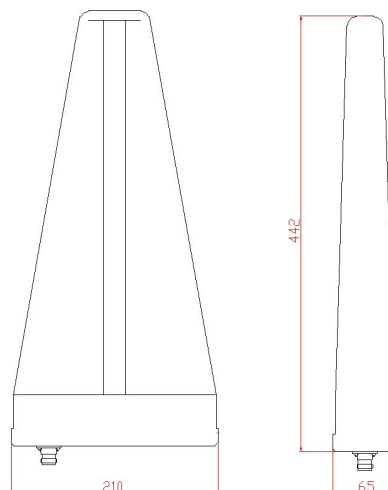


**698~960/1710~2700MHz 85°/90° 9/10dBi  
Logarithmic Periodic Directional Antenna**

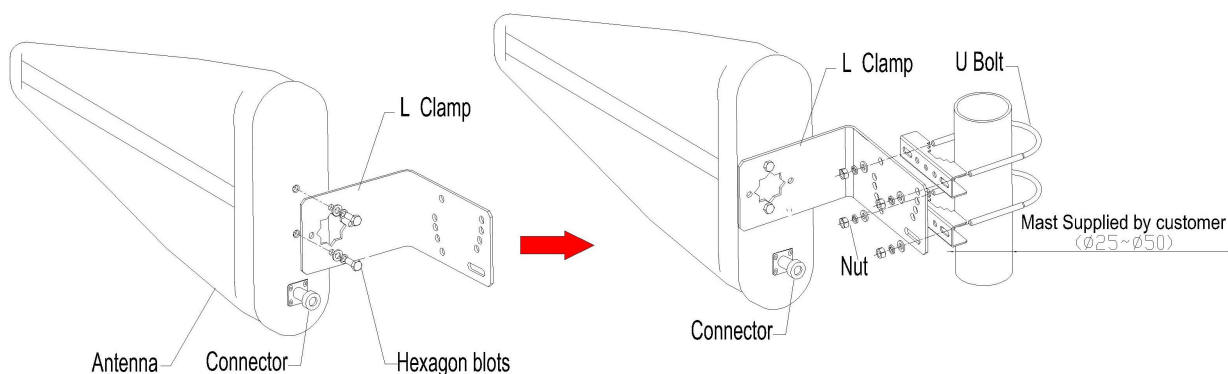
Product pictures



Product size



### Installation Sketch



Note:When installing, you should let the side with a littlehole face down to prevent the antenna radome from water.