

# TDJ-0727DSAL-M

## Broadband Directional Antenna

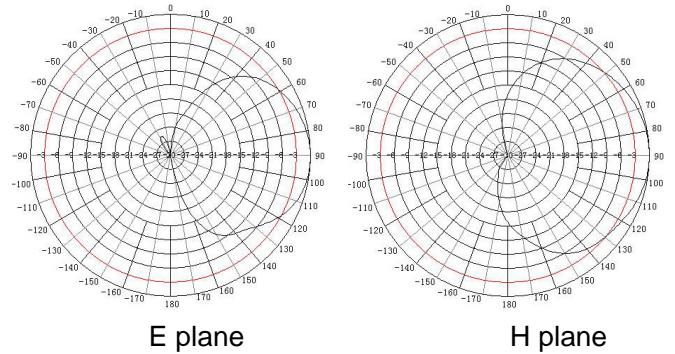
### Technical Sheet



Note: The picture is for reference only, please kindly consult with the real product..

#### Features

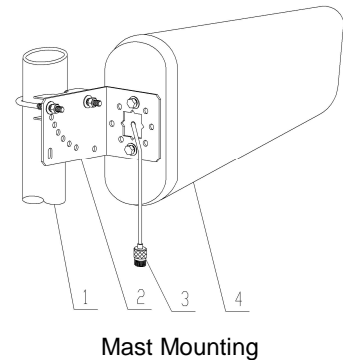
- 698MHz to 2700MHz broad band
- Low VSWR
- Support the popular communications system currently
- Sealed with radome, Strong protection ability
- Supplied with down-tilt bracket for mast mounting, a down-tilt bracket for wall mounting is optional



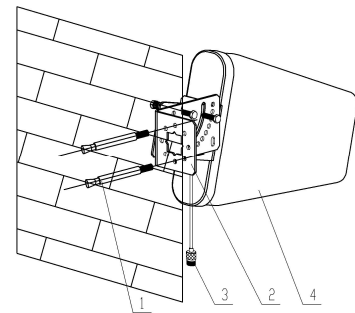
#### Specifications

Model		TDJ-0727DSAL-M		
Freq.Range-MHz		698-806	806-960	1710-2700
Beamwidth-°	E	65	60	50
	H	85	85	60
F/B Ratio-dB		≥15	≥18	≥18
Gain-dBi		7±0.5	8±0.5	9.5±1
VSWR		≤1.5		
Impedance-Ω		50		
Polarization		Vertical		
IM3-dBm(33dBm)		≤-107		
Max.Power-W		100		
Connector		N female or customized		
Dimensions ( with bracket ) -mm		293×210×65		
Weight(without bracket)-Kg		0.92		
Mast Diameter-mm		φ40 to 50		
Note:When installing, you should let the side with a little hole face down to prevent the antenna radome from water.				

#### Installation Sketch



Mast Mounting



Wall Mounting

1. Mast(user-provide) or expansion bolt; 2. "L" mounting kit;  
3. connector; 4. antenna



Kenbotong Technology Co., Ltd.

Addr: NO.2 Chanxiu Road ,Foshan city,Guangdong China

Code:528061

Tel: +86-757-82219788, 82126632 Fax: +86-757-82212072

Email: kbt@kenbotong.com web: <http://www.kenbotong.com>