



**KBT** 617~960/1695~2700/3300~4200/4800~6000MHz 100°/85°/80°/70°  
7.5/9/9/8dBi Logarithmic Periodic Directional Antenna

**TDJ-0660DSF-M**

**Application**

Used in 2G/3G/4G/5G/WLAN system

**Electrical specifications**

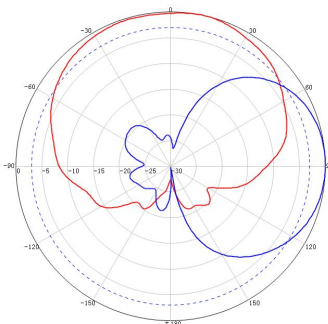
Frequency range (MHz)	617~960	1695~2700	3300~4200	4800~6000
Polarization	Vertical			
Gain (dBi)	7.5±1	9±1	9±1	8±1
Horizontal beam width (°)	100±15	85±15	80±15	70±15
Vertical beam width (°)	65	60	55	50
Front-to-back ratio (dB,avg.)	15	20	18	18
Impedance (Ω)	50			
VSWR	≤1.8			
Intermodulation IM3 (2×43dBm carrier)	-153dBc	-153dBc	-153dBc	/
Maximum power (W)	50			

**Mechanical specifications**

Connector	N Female or 4.3-10 Female
Exposed cable size (cm)	30
Connector position	Bottom
Antenna size (mm)	442*210*65
Packing size (mm)	488*225*88
Weight (kg)	≤1 (Include bracket)
Radome material	ABS
Radome color	White
Operating temperature (°C)	-40~60
Application	Outdoor
Mechanical tilt (°)	0~60
Rated wind velocity (m/s)	55
Suitable pole diameter (mm)	Φ25-Φ50
Mounting kit	JM-TA

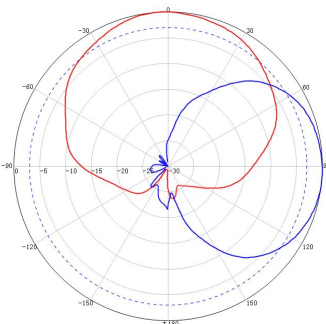
**617~960MHz**

**Typical pattern:**



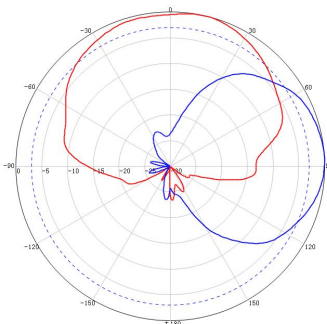
**1695~2700MHz**

**Typical pattern:**



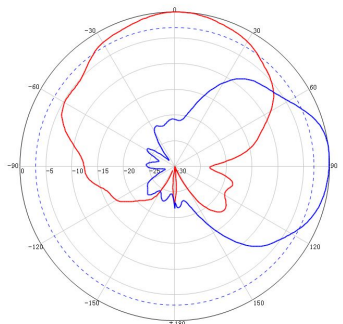
**3300~4200MHz**

**Typical pattern:**



**4800~6000MHz**

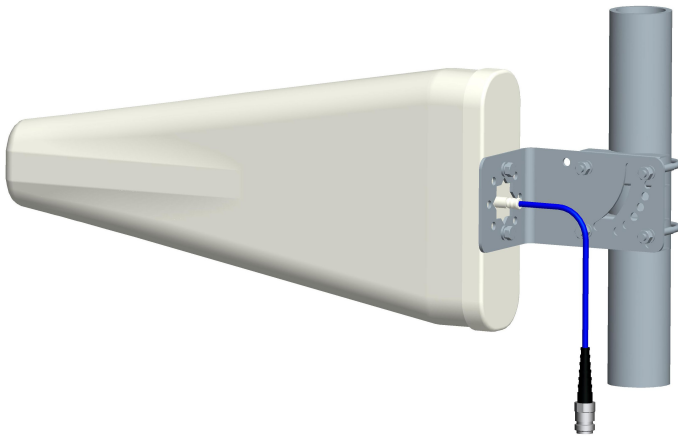
**Typical pattern:**



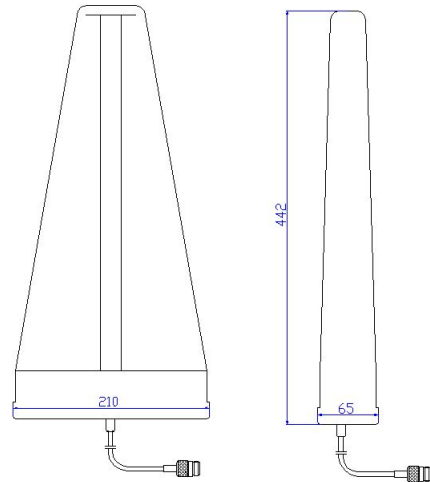


**KBT** 617~960/1695~2700/3300~4200/4800~6000MHz 100°/85°/80°/70°  
7.5/9/9/8dBi Logarithmic Periodic Directional Antenna

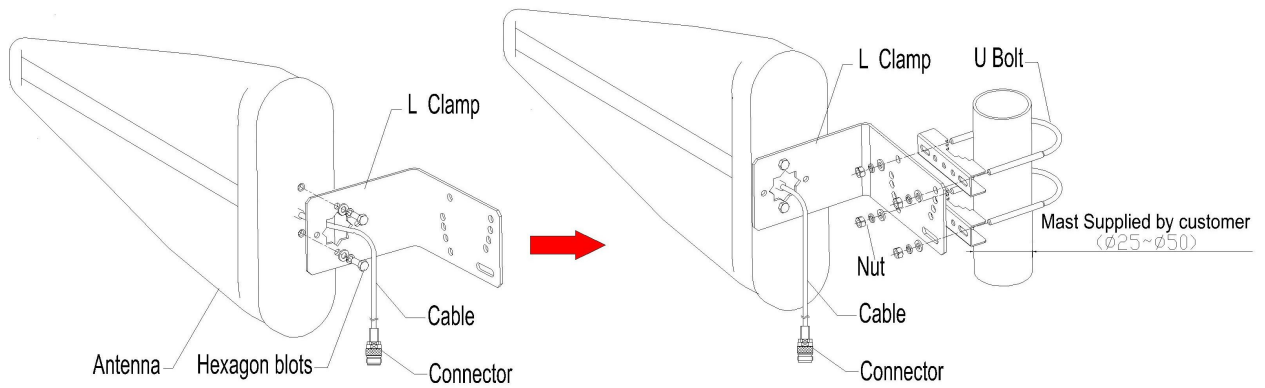
Product pictures



Product size



## Installation Sketch



Note: Insure that the antenna is installing with the drip hole at the bottom (be mounted the bottom down to avoid water penetrate into the antenna).