

**KBT****617~960/1710~2700/3300~4000MHz 60°/42°/38°  
12/14/12dBi****TDJ-0640DS****Application**

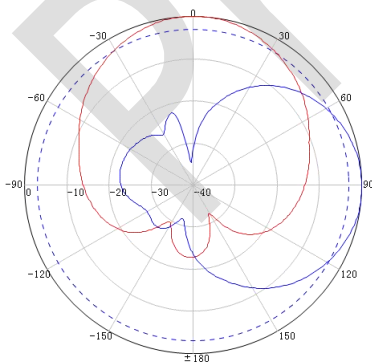
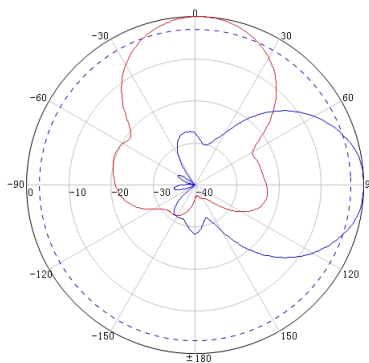
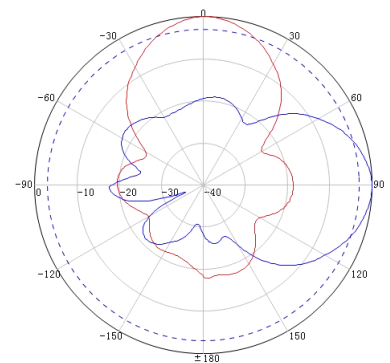
Used in 617-4000MHz system

**Electrical specifications**

Frequency range (MHz)	617~960	1710~2700	3300~4000
Polarization	Vertical		
Peak Gain (dBi)	12	14	12
Horizontal beam width (°)	60	42	38
Vertical beam width (°)	50	34	32
Front-to-back ratio (dB)	≥20	≥24	≥13
Impedance (Ω)	50		
VSWR	≤2.5	≤2.0	≤2.0
Maximum power (W)	50		
Lighting protection	DC Ground		

**Mechanical specifications**

Connector	N Female or Customized		
Exposed cable length (cm)	25 or Customized		
Connector position	Bottom		
Antenna size (mm)	1307*232*40		
Weight (kg)	1.5		
Mechanical Tilt(°)	-20~+20		
Operating temperature (°C)	-40~65		
Application	Outdoor		
Rated wind velocity (m/s)	60		
Mounting Options	Pole Mounting		
Suitable pole diameter (mm)	Φ30-Φ50		

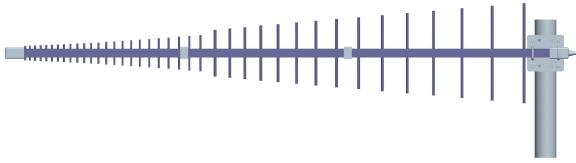
**617~960MHz Typical pattern:****1710~2700MHz Typical pattern:****3300~4000MHz Typical pattern:**



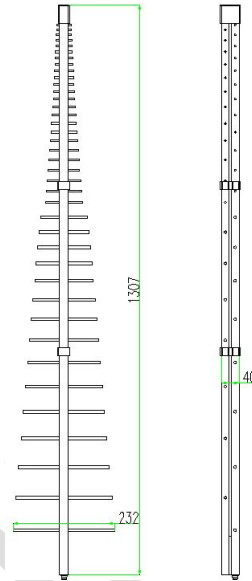
**KBT**

617~960/1710~2700/3300~4000MHz 60°/42°/38°  
12/14/12dBi

Product pictures



Product size



## Installation Sketch

