



# KBT 380-450MHz 90° 11dBi 0° Electrical Downtilt Directional Panel Antenna

## KBT90DP11-04RT0-A

### Application

Used in 380-450MHz system

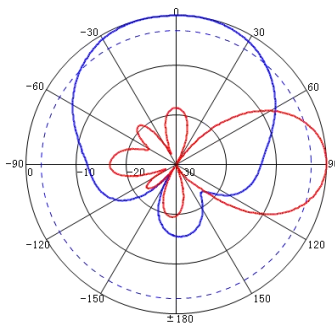
### Electrical specifications

Frequency range (MHz)	380-450
Polarization	±45°
Gain (dBi)	11
Electrical Downtilt (°)	0
HBW (°)	85±3
VBW (°)	38±3
Front-to-back ratio (dB)	≥15
Cross-polar discrimination (dB)	≥15 (±60° ≥10)
Isolation (dB)	≥22
Impedance (Ω)	50
VSWR	≤1.5
Intermodulation IM3 (2×43dBm carrier)	≤-150 dBc
Maximum power (W)	≥400
Lighting protection	DC Grounding

### Mechanical specifications

Connector	2*N-Female
Connector position	Bottom
Height/width/depth (mm)	900*300*146
Packing size (mm)	1020*375*250
Weight (Kg)	10
Radome material	UPVC
Radome color	Gray
Mechanical tilt(°)	0-15
Operating temperature (°C)	-40-60
Rated wind velocity (m/s)	60
Suitable pole diameter (mm)	Φ50-Φ115
Mounting kit	JM-900RZ1

380-450MHz: ±45° Pol.



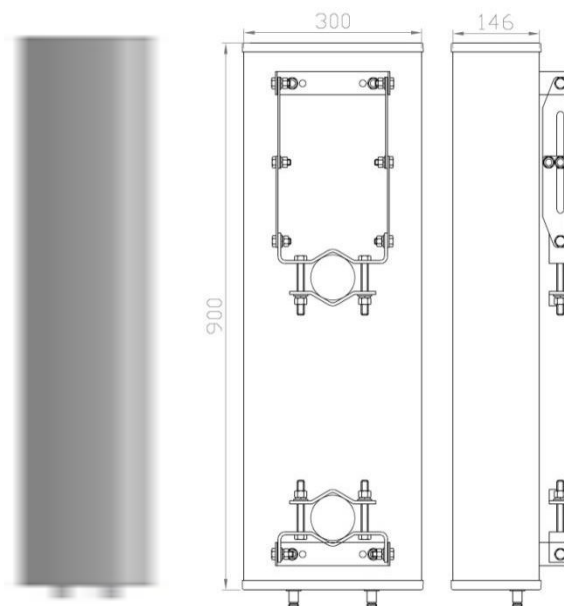


# KBT 380-450MHz 90° 11dBi 0° Electrical Downtilt Directional Panel Antenna

## Connector Position



## Outline Drawin



## Installation Sketch

