

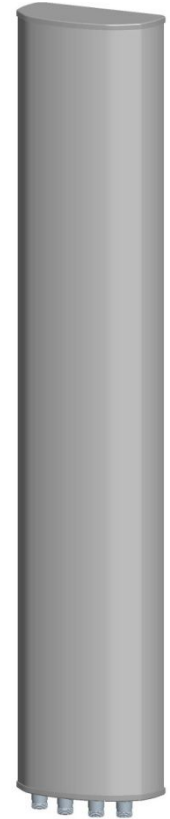


Kenbotong Technology Co., Ltd.

4-Port Manual or by optional Replaceable RCU Antenna
XXPOL 820-960MHz/1710-2170MHz 65° /65° 17dBi/17dBi 0-10°

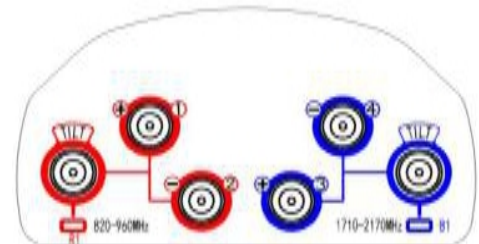
Electrical specifications

Model	KBT65DP1717-0820AE-L				
Freq. range(MHz)	820-896	870-960	1710-1880	1850-1990	1920-2170
Polarization	±45°				
Gain(dBi)	16.2	16.5	16.5	16.9	16.7
Electrical downtilt(°)	0-10		0-10		
HBW(°)	65±5	65±3	65±4	63±3	60±3.5
VBW(°)	13±1	12±1	9.5±1.1	9.5±1	9±1
First upper side lobe suppression(dB)	15				
Front to back ratio(dB)	≥25				
Cross polar discrimination(dB)	≥15 (±60° ≥8)				
Isolation(dB)	≥28				
Impedance(Ω)	50				
VSWR	≤1.5				
Intermodulation IM3(dBc)	≤-150(2*43dBm)				
Maximum power(W)	300		250		
Ground	DC Grounding				



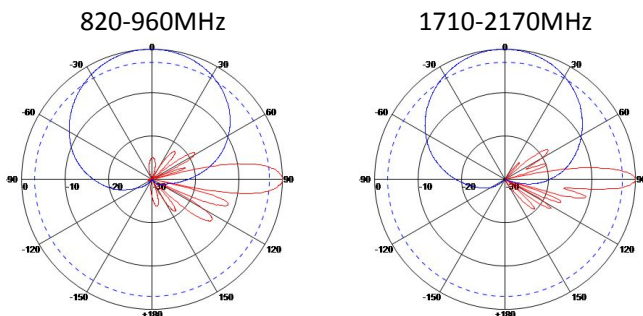
Mechanical specifications

Connector	4*7/16DIN Female
Connector position	Bottom
Antenna size(mm)	1600*270*137
Packing size(mm)	1830*350*220
Weight(Kg)	12.5
Bracket Weight(Kg)	4
Radome material and color	UPVC/Gray
Mechanical tilt(°)	0-15
Operating temperature(°C)	-40-60
Rated wind velocity(m/s)	60
Suitable pole diameter(mm)	Φ 50- Φ 115
Mounting kit	JM-900DZA
Electricaldowntiltadjustmen	Manual or by optional Replaceable RCU
RCU model	KRCU20C



Note:The height includes the caps,the width and thickness do not contain the caps.

Typical pattern



Kenbotong reserves the right to change specifications without prior notice.

3023690

No.2 ChanxiuRoad,Foshan,Guangdong,China. 528061 Tel:+86-757-82219788, 82126632
 Fax: +86-757-82212072 Email: kbt@kenbotong.com Web: <http://www.kenbotong.com>