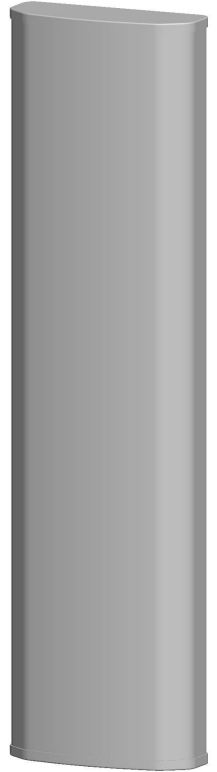




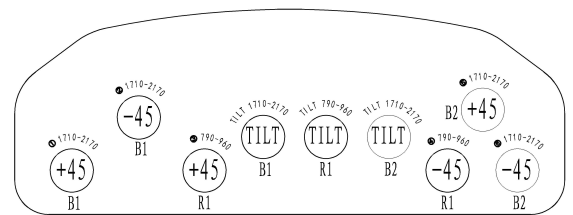
Kenbotong Technology Co., Ltd.

XXXPol 790~960/1710~2170/1710~2170MHz 65/65/65° 15/17/17dBi 0° -14° /0° -10° /0° -10° Tilt

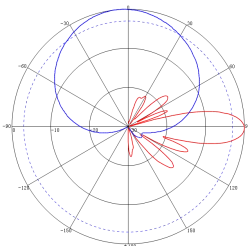
| Electrical specifications | KBT65DP151717-0820CE | | | | |
|--|----------------------|---------|-----------|----------|-----------|
| Frequency range (MHz) | 790-896 | 880-960 | 1710-1880 | 1850-990 | 1920-2170 |
| Polarization | ±45° | | | | |
| Gain (dBi) | 14.2 | 14.5 | 16.8 | 17.3 | 17.2 |
| Electrical Downtilt (°) | 0~14 | | 0~10 | | |
| Half-power beam width (°) | Hor.:68 | Hor.:65 | Hor.:68 | Hor.:65 | Hor.:62 |
| | Ver.:14 | Ver.:13 | Ver.:7 | Ver.:6.5 | Ver.:6 |
| Sidelobe suppression for first sidelobe above main beam (dB) | 15 | | 15 | | |
| Front-to-back ratio (dB) | ≥25 | | | | |
| Cross-polar discrimination (dB) | ≥15(±60°≥8) | | | | |
| Isolation (dB) | ≥28 | | | | |
| Impedance (Ω) | 50 | | | | |
| VSWR | ≤1.5 | | | | |
| Intermodulation IM3 (2×43dBm carrier) | ≤-107dBm | | | | |
| Maximum power (W) | 250 | | | | |
| Lighting protection | DC Ground | | | | |



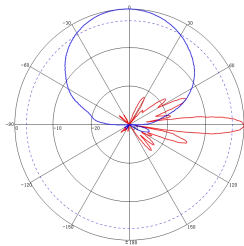
| Mechanical specifications | |
|--------------------------------|---------------------------------------|
| Connector | 6×7/16DIN Female |
| Connector position | Bottom |
| Height/width/depth (mm) | 1390*385*138 |
| Packing size (mm) | 1690*450*250 |
| Weight (kg) | 15(antenna) |
| Weight (kg) | 4 (bracket) |
| Radome material | Fiberglass |
| Radome color | Gray |
| Mechanical tilt (°) | 0~10 |
| Operating temperature (°C) | -40~60 |
| Rated wind velocity (m/s) | 60 |
| Suitable pole diameter (mm) | 50~115 |
| Mounting kit | JM-900DZA |
| Electrical downtilt adjustment | Manual or by optional Replaceable RCU |
| RCU model | KRCU20C |



790~960MHz: ±45° Polarization



1710~2170MHz: ±45° Polarization



Addr: No.2 Chanxiu Road, Foshan City, Guangdong, China. 528061
 Tel:+86-757-82219788, 82126632 Fax:+86-757-82212072
 Email: kbt@kenbotong.com Web:<http://www.kenbotong.com>