

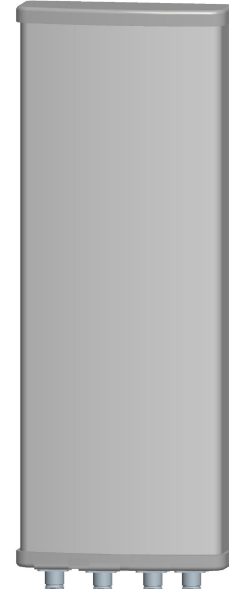


Kenbotong Technology Co., Ltd.

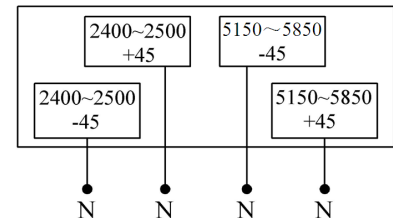
Multi-band Panel	2400~2500	5150~5850
Dual Polarization	X	X
Half-power Beam Width	65°	65°
Fixed Electrical Downtilt	0°	0°

XXPo1 2400~2500/5150~5850MHz 65° 14.5/16.5dBi 0° Tilt

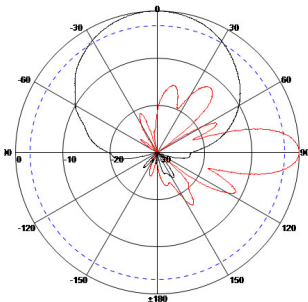
Electrical specifications	KBT65DP1517-2458RT0	
Frequency range (MHz)	2400~2500	5150~5850
Polarization	±45°	
Gain (dBi)	2×14.5	2×16.5
Electrical Downtilt (°)	0	
Half-power beam width (°)	Horizontal:65 Vertical:15	Horizontal:65 Vertical:7.5
Front-to-back ratio (dB)	≥20	
Cross-polar discrimination (dB)	≥15	
Isolation (dB)	≥28	
Impedance (Ω)	50	
VSWR	≤1.5	≤2
Maximum power (W)	200	50
Lighting protection	DC Ground	



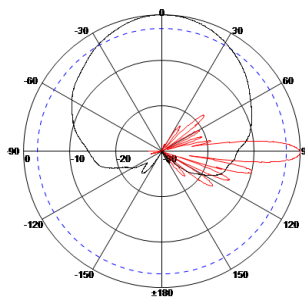
Mechanical specifications	
Connector	4×N Female
Connector position	Bottom
Height/width/depth (mm)	500×167×55
Packing size (mm)	600×220×125
Weight (kg)	2.1
Radome material	UPVC
Radome color	Gray
Mechanical tilt (°)	0~15
Operating temperature (°C)	-40~60
Rated wind velocity (m/s)	60
Suitable pole diameter (mm)	40~75
Mounting kit	JM-2400RZ1



2400~2500MHz: ±45° Pol.



5150~5850MHz: ±45° Pol.



5.39.6.4332

Kenbotong reserves the right to change specifications without prior notice.

Addr: No.2 Chanxiu Road, Foshan City, Guangdong, China. 528061

Tel:+86-757-82219788, 82126632 Fax:+86-757-82212072

Email: kbt@kenbotong.com Web:<http://www.kenbotong.com>