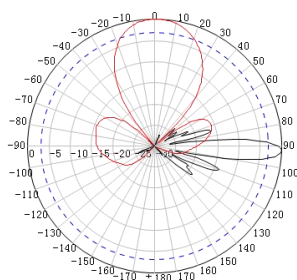
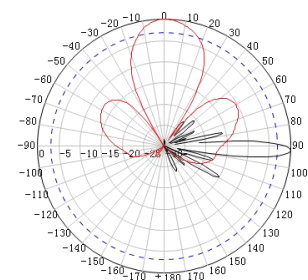


**KBT****XX Pol 1695-2690MHz*2 32° 21dBi 2-12° Integrated RET Outdoor Directional Dual-band Antenna****KB30D1727A4-21D- I****Electrical Specifications**

Frequency range (MHz)	1695-2690				
	1695-1880	1850-1990	1920-2200	2170-2500	2490-2690
Polarization	±45°				
Gain (dBi)	19.6	20.5	20.7	21.0	20.5
Horizontal Beamwidth (°)	40	36	32	30	27
Vertical Beamwidth (°)	7.8	7.2	6.5	5.8	5.5
Electrical Downtilt (°)	2-12 /2-12				
1st Upper Sidelobe Suppression(dB)	≥15				
Front-To-Back Ratio@180±30° (dB)	≥25				
Cross-polar Discrimination@0° (dB)	≥15				
Isolation Intra-system (dB)	≥25				
Impedance (Ω)	50				
VSWR	< 1.5				
IM3 (2*43dBm carrier)	≤150dBc				
Maximum Power per Port (W)	250				
Lighting Protection	DC Grounding				

Mechanical specifications

Connector Type	4 * 4.3-10 DIN Female
Connector Location	Bottom
Dimensions,L*W*D (mm)	1400*450*145
Packing Dimensions L*W*D(mm)	1630*510*265
Antenna Net Weight (kg)	19.5
Bracket Net Weight(Kg)	4.0
Shipping Weight (kg)	26.4
Radome material and Color	Fiberglass, Light Grey
Operational Temperature (°C)/Humidity(%)	-40 to +65 / ≤95%
Operational/Max Wind Speed (m/s)	41 /60
Wind Load@150km/h	770 /230 /810
Frontal /Lateral /Rear side(N)	
Mounting kit	JM-900DZA
Mechanical tilt (°)	0-15
Mounting Pole Diameter (mm)	Φ50-115
RET Type	Integrated motor,replaceable.KRCU20D /AISG2.0

1695-2200MHz: ±45°**2200-2690MHz:±45°**



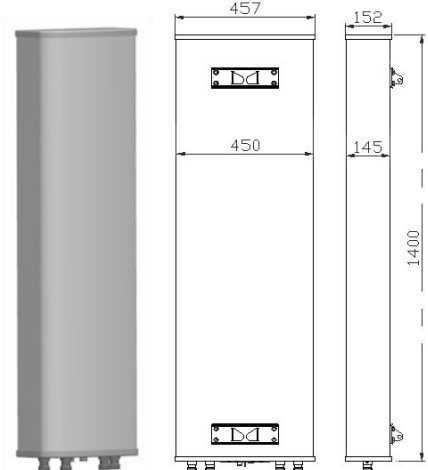
KBT

XX Pol 1695-2690MHz*2 32° 21dBi 2-12° Outdoor Directional Dual-band Antenna

Integrated RET

Connector Position

Outline Drawin



Installation Sketch

Step1: ① Install the M10 bolt and u-shape clamp on the upper and lower brackets of the antenna and pre-tighten the M10 nuts.
② Fastening the brackets to the back of antenna with M10 bolt , torquing the nut to 25N·m.

Step2: Tightening the scale to the upper bracket with the M6 nut, fix the scale to 0 degree position, torquing the nut to 8N·m. (Above steps must be completed under the tower before installing the antenna).

Step3: Installing the antenna vertically to the support pole using M10 bolt, torquing the nut to 25N·m.

Step4: Loosing the scale fixing nut on the upper bracket, adjusting the mechanical downtilt angle of antenna to the suitable angle based on the scale display, then tightening the scale and all the nuts on the bracket.