

# ULTRA WIDEBAND

Broadband Antennas,  
Igniting Infinite Communication Possibilities!

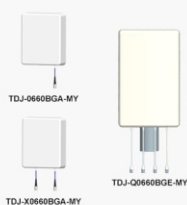
**600-6000MHz**  
**KBT ANTENNA**

www.kenbotong.com



## Directional Panel Antenna

Model	TDJ-0660BGA-MY	TDJ-X0660BGA-MY	TDJ-Q0660BGE-MY
Freq Range(MHz)	617~960/1695~2700 /3300~4200/ 4800~6000	617~960/1695~2700 /3300~4200/ 4800~6000	617~960/1695~2700 /3300~4200/ 4800~6000
Polarization	Vertical	±45°	±45°
Gain (dBi)	6~8		7~8
VSWR	≤1.8		≤2.0
Horizontal beam width (°)	85/70/75/50	85/70/75/50	80/75/70/40
Intermodulation IM3 (@2×43dBm carrier)	-153dBc		
Isolation (dB)	≥20		
Connector	4.3-10 or N Female	2*(4.3-10 or N Female)	4*(4.3-10 or N Female)
Antenna size (mm)	306*250*86		495*310*90
Weight (kg)	1.5		3



## Omnidirectional Ceiling Antenna

Model	TQJ-0660XTLA-M	TQJ-0660XDZ-M	TQJ-03560XTLE-M	TQJ-D0660XDZ-M	TQJ-D0660XTLA-M	TQJ-Q0660XDZA-M
Freq Range(MHz)	617~698/ 698~960/ 1695~2700/ 3300~4200/ 4800~6000	617-960/ 1710-2700/ 3300-3800/ 4900-6000	350~520/ 617-960/ 1695~2700/ 3300~4200/ 4800~6000	617-960/ 1710-2700/ 3300-3800/ 4900-6000	617~698/ 698~960/ 1695~2700/ 3300~4200/ 4800~6000	617-960/ 698~960/ 1710-2700/ 3300-3800/ 4900-6000
Polarization	Horizontal	Vertical	Horizontal	Vertical	Horizontal	Horizontal
Gain (dBi)	4~7	3.5~5	4~7	4~6	4~6	4~6
VSWR	≤2.0/≤1.5	≤2.0/≤1.8	≤1.8/≤1.5	≤2.0/≤1.8	≤1.9	≤2.0/≤1.8
Horizontal beam width (°)	360					
Intermodulation IM3 (@2×43dBm carrier)	-153dBc	-153dBc	-153dBc	-150dBc	-153dBc	-150dBc
Isolation (dB)	/	/	/	16/20/25/20	18/18/20/30/30	16/20/25
Connector	4.3-10 or N Female	4.3-10 Female	4.3-10 or N Female	2*4.3-10 Female	2*(4.3-10 or N Female)	4*(4.3-10 or N Female)
Antenna size (mm)	Φ250*8	Φ207*56	Φ300*11.5	Φ207*56	Φ250*8	Φ350*45
Weight (kg)	0.4	0.6	0.35	0.6	0.4	1.3



## Logarithmic Periodic Directional Antenna



Model	TQJ-0660DSF-M
Freq Range(MHz)	617~960/1695~2700/ 3300~4200/4800~6000
Polarization	Vertical
VSWR	≤1.8
Gain (dBi)	7.5~9
Horizontal beam width (°)	100±15/85±15/80±15/70±15
Intermodulation IM3 (@2×43dBm carrier)	-153dBc
Connector	N Female or 4.3-10 Female
Antenna size (mm)	442*210*85
Weight (kg)	1

## Omni Antenna

Model	TQJ-0660AG2	TQJ-D0660R5
Freq Range(MHz)	698~960/1710~2700/ 3300~6000	617-960/1710-2700/ 3300-3800/4900-6000
Polarization	Vertical	Vertical
Gain (dBi)	3	3~5
VSWR	≤2.5	
Horizontal beam width (°)	360	
Connector	4.3-10 or N Female	2*(N Female or SMA male)
Antenna size (mm)	Φ24*200	Φ82*200
Weight (kg)	0.1	0.8
Ingress Protection	IP65	/



## Terminal Antenna / Omnidirectional Vehicle Antenna

Model	TQC-0672UT-T	TQC-D0672UT-A	TQC-0660CA2	TQX-0660H3-W	TQX-0660LB
Freq Range(MHz)	617~698/698~960/ 1695~2700/3300~7200	617~698/698~960/ 1695~2700/3300~7200	600~960/ 1710~6000	698~960/1710~2700/ 3300~6000	617~960/1400~2700/ 3300~6000
Polarization	Vertical				
Gain (dBi)	3~7	3~6	2~2.5	2	1.5~3
VSWR	≤3.0/≤2.5/≤2.0/≤2.0	≤2.5/≤2.0	≤2.5	≤3.5	≤2.5/≤2.8/≤2.5
Horizontal beam width (°)	360				
Connector	SMA male	2*SMA male	SMA male	SMA male	SMA male
Antenna size (mm)	Φ32*72	Φ55.5*89	Φ30*106	Φ19.2*171	Φ26*218
Customized Cable Length (cm)	300(RG174)	300(RG174)	300	/	/
Weight (kg)	0.15	0.6	0.06	0.015	0.043

