

Copyright 2017 Xingji Electrical Apparatus Co.,Ltd .
All rights reserved.



 **兴机电有限公司**
新机电 XINGJI ELECTRICAL APPARATUS CO.,LTD

XING JI ELECTRICAL APPARATUS CO.,LTD.

Add: 12 Jixian Road, Louqiao Industrial Park,
Ouhai District, Wenzhou City.
Tel: 0577-88428983 88620237 88625541 88420889
Email: wxjxs@china-xj.com
Fax: 0577-88637969 88625542
<http://www.china-xj.com>

 **兴机电有限公司**
新机电 XINGJI ELECTRICAL APPARATUS CO.,LTD

XING JI
ELECTRICAL APPARATUS
CO.,LTD

► <http://www.china-xj.com>

**Low-Voltage Switchgear
Accessories**



COMPANY INTRODUCTION

"Wenzhou Xingji Electrical Appliances Co., Ltd.", former Wenzhou Xinqiao Mechanical Equipment Factory, was founded in 1989. As a standing member of China Electrical Equipment Industry Association, we are specialized in the R&D, manufacturing, and sale of high, medium, and low-voltage electrical components and complete equipment accessories. After 20 years' continuous efforts and growth development, now we have established eight investment companies that recruit about 1800 employees.

Xingji Electrical Appliances has always kept pace with the times and insisted on sustainable development. To meet the market demand, we have adhered to "standardized, continuous, and institutionalized" management. We have stuck to the philosophy of "practicality and steady growth" and the quality management policy of "leading technology, standard management, superior quality, and customer satisfaction". On the path towards achieving "Xingji excellency", we have constantly provided Xingji employees with modern features and encouraged them to take up new challenges and create a brighter future.



► CONTENT



■ Operating Mechanism P01-16



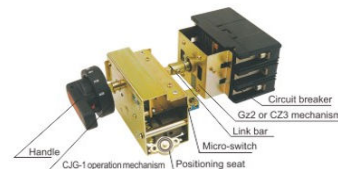
■ Connector assembly P17-34



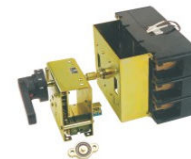
■ Bus-bar clamp, row support, flapBus-bar clamp, row support, flap P35-39



■ Lock series and other accessories P40-46



■ GJG-1 operation mechanism



■ GJG-3 operation mechanism

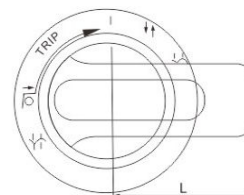
Type meaning



Specialty

By controlling the operation handle installed on the panel of drawer, the switch can achieve the function of on-off, testing, isolation, locking position in the scope of 360 degree, and can realize the swap function of the drawer by transmission between gears and cams.

CJG-□B Handle position and Type instruction

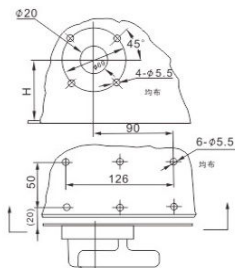


Handle Type	Handle Length
CJG-1B	L=65
CJG-3B	L=95
CJG-4B	L=125
CJG-5B	L=80

- I Operation position: main switch is closed, and the components are locked.
- O Main switch opening position: primary circuit is open, control circuit is connected, and the components are locked.
- T Testing position: main switch is open, control circuit is connected, and the components are locked.
- P Plotting out position: both primary circuit and control circuit are disconnected.
- Isolation position: plotted out by the distance of 30mm, primary circuit and control circuit are disconnected, and the components are locked.
- After the handle is pressed inward, the button can be turned from position 0 to 1 so as to open or close the circuit breaker.

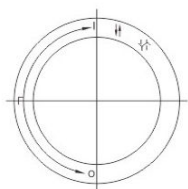
■ Note: if operated again, you have to hold down the button at one operation by hand, no pausing in the midway.

Installing dimensions for CJG-1 and CJG-3 operating mechanism panel of tapping machine



Handle type	Height from ground to handle center
CJG-1	H=69
CJG-3	H=105

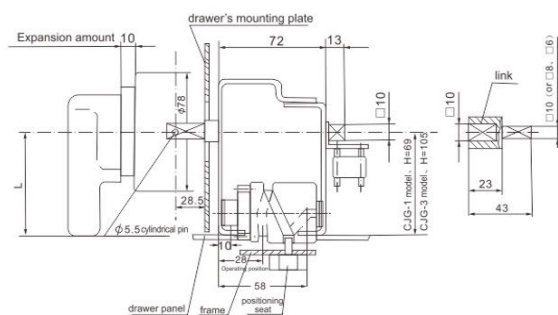
CJG-1/3 under-voltage operating mechanism



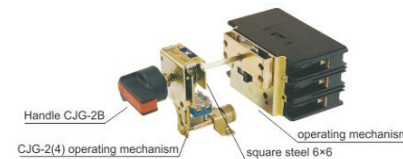
■ Schematic diagram of CJG-1, 3 under-voltage handle

Characteristics: CJG-1/ and CIG-3/ under-voltage operating mechanism are specially designed for under-voltage circuit breakers, and the configuration of them is same as that of CJG-1 and CJG-3, expection indication board on the handle, press the handle and rotate to the position "1" to close or rotate to the position "0" to open, on pausing in the midway, as shown in the figure:

Installation diagram of CJG-1/3 operating mechanism



■ CJG-1/ZC and CIG-3/DC mechanism is specially designed for the drawer installed with electrical operating mechanism, and the configuration of them is same as that of CJG-1 and CJG-3, expecting adding a micro-switch. The added micro-switch is used to indicate the operation of opening and closing.



Type meaning:

CJG-2(4)

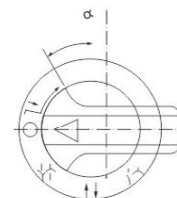
- Design serial number: 2 means on-off at 60 degree, 4 means on-off at 90 degree
- GCS operation mechanism code

Specialty

CJG-2/4 operating mechanism is specially designed for 1/2 unit drawer of GCS low-voltage withdrawable cabinet. By controlling the operation handle installed on the panel of drawer, the switch can achieve the function of on-off, testing, isolation, locking position in the scope of 360 degree.

An micro-switch is installed on operating mechanism to indicate the state of the electrical equipment.

CJG-2(4) Handle position and Type instruction

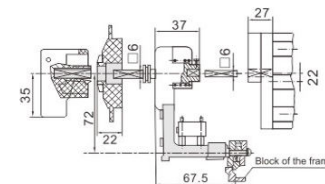


- Operation position: main switch is closed, and the components are locked.
- Main switch opening position: primary circuit is open, control circuit is connected, and the components are locked.
- Testing position: main switch is open, control circuit is connected, and the components are locked.
- Plotting out position: both primary circuit and control circuit are disconnected.
- Isolation position: plotted out by the distance of 30mm, primary circuit and control circuit are disconnected, and the components are locked.
- After the handle is pressed inward, the button can be turned from position 0 to 1 so as to open or close the circuit breaker.

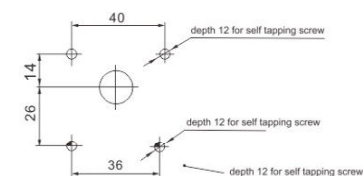
Handle Type	α	Remark
CJG-2 model	30°	60°
CJG-4 model	0°	90°

■ Note: if operated again, you have to hold down the button at one operation by hand, no pausing in the midway.

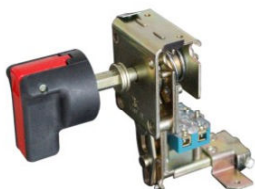
Installation diagram of CJG-2, 4 operating mechanism



Mounting hole dimensions of CJG-4 operating mechanism



CJG-5(6) type operating mechanism



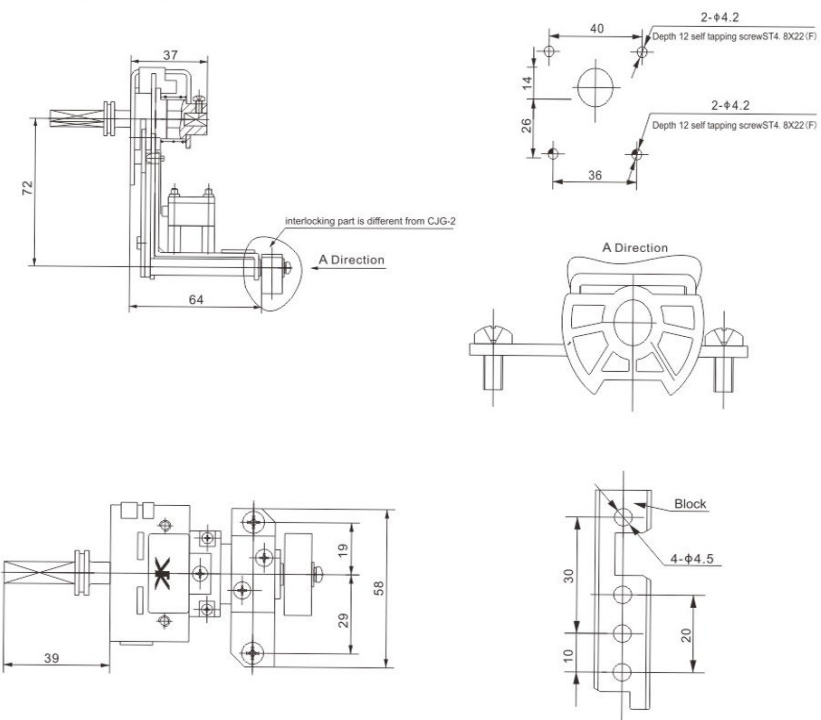
1.Characteristics:

CJG-5(6) type operating mechanism removes the frame block, and equipped with limit block on the frame based on CJG-2(4), other things remaining unchanged.

2. Advantage:

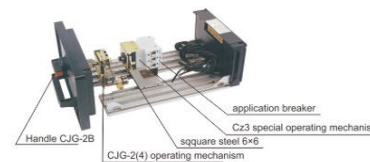
reliable interlocking, avoiding from damage caused by being pushed in and out.

Dimensions diagram of CJG-5(6) operating mechanism

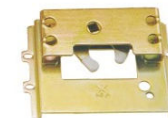


■ Configuration and Mounting hole dimensions diagram for CJG-5

■ Limited Mounting hole dimensions diagram

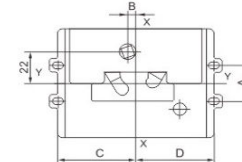


■ CJG-2 mechanism installed with C45 and C65 switch (CZ3-183 series mechanism) diagram

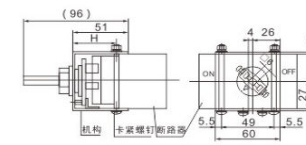


■ For CJG-2 special operating mechanism(CZ3-17series)

Installation dimensions diagram for CZ3-17series



Installation dimensions diagram for CZ3-183sereis



Installation dimensions table for CJG-2 operating mechanism

Type	Applicable circuit breaker	square hole position			
		A	B	C	D
CZ3-171	CM1-100 TM30-100 SM30-100	30	5	52	52
CZ3-171.3	S(D)-100	30	5	66	66
CZ3-171.4	NM1-100H	30	2	52	52
CZ3-171.5	KFM2-100	30	5	66	66
CZ3-172	CM1-63 TM30-63 SM100-63	25	5	50	50
CZ3-172.2	NF63-HW/CW/SW	25	5	55	55
CZ3-172.3	BMM-63	25	5	55	55

Type	Applicable circuit breaker	square hole position			
		A	B	C	D
CZ3-172.4	NSD-100	25	3	55	55
CZ3-172.5	NF32-SW	25	3	55	50
CZ3-172.6	KFM2-63	25	5	50	50
CZ3-173.1	S1 HSM1-125 RMM1-63H,100C	25	-5	50	50
CZ3-173	S2 HSM1-160	30	-5	50	50
CZ3-178	TC-100BDW	30	10	55	45

Number	Type	Matching switch type	Clamping screw	H	L
1	CZ3-183	C45/3P	M4×65	44	54
2	CZ3-183F	C45/3P+auxiliary	M4×75	44	63
3	CZ3-183.1	C45/4P	M4×85	44	72
4	CZ3-183.4	C65/3P	M4×65	40	54
5	CZ3-183.4F	C65/3P+auxiliary	M4×75	40	63
6	CZ3-183.8	C65/4P	M4×85	40	72

Handle selection parameter table for CJG-operating mechanism

Operating mechanism type	Handle type selection	L	Title	Link bar number	Applicable drawer unit number	applicable circuit breaker mechanism
CJG-1型	CJG-1B	65	Link 8×8 Link 6×6	GCS-TC-00090 GCS-TC-00096	1 unit	selecting CZ2 mechanism or CZ3 mechanism
	CJC-5B	80				
CJG-1型	CJG-3B	95	Link 10×10	GCS-TC-00089	≥ 1.5 unit	
CJG-3型	CJG-4B	125	Link 10×10	GCS-TC-00089	≥ 2 unit	

■ **Characteristics:** MLS-3 large interlock series is specially designed for 1 unit and above drawer of MLS low-voltage withdrawable cabinet.

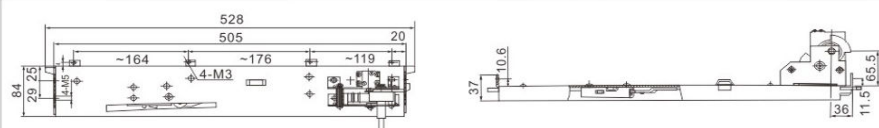


■ MLS-3 operating mechanism

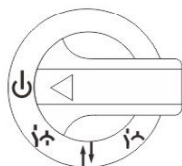
Type meaning



MLS-3 large interlock dimensions diagram

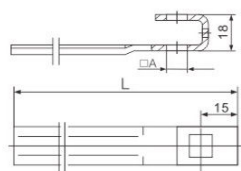


Position instruction of operating handle(it has testing location without drawing out)



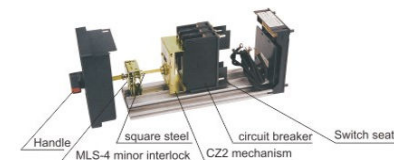
- ⏻ Operation position: the components are locked. Main switch(isolation switch or plastic shell switch) can be operated by a separate handle. After main switch is open, the handle can be turned to testing position.
- ⚡ Testing position: main switch is open, control circuit is connected, and the components are locked.
- ⏻ Plotting out position: both primary circuit and secondary circuit are disconnected.
- ⚡ Isolation position: plotted out by the distance of 30mm, primary circuit and control circuit are disconnected, and the components are locked by mechanical interlocking.

Configuration and dimensions diagram for MLS locking tab



■ Note: The locking tab can be customized according to length L and square hole.

Type	L	A	Type	L	A
Locking tab MLS200.069.1	108	8	Locking tab MLS200.069.14	140	8
Locking tab MLS200.069.2	120	8	Locking tab MLS200.069.15	167	10
Locking tab MLS200.069.3	150	10	Locking tab MLS200.069.17	133	8
Locking tab MLS200.069.4	166	10	Locking tab MLS200.069.18	133	10
Locking tab MLS200.069.5	160	8	Locking tab MLS200.069.20	127	8
Locking tab MLS200.069.6	160	10	Locking tab MLS200.069.21	108	10
Locking tab MLS200.069.11	128	8	Locking tab MLS200.069.22	173	10
Locking tab MLS200.069.12	127	10	Locking tab MLS200.069.23	130	8
Locking tab MLS200.069.13	147	10	Locking tab MLS200.069.24	130	10



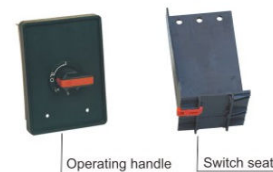
■ MLS-4 operating mechanism

Type meaning

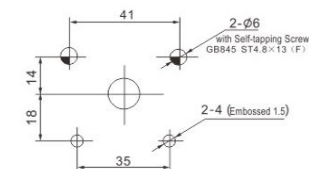


Specialty

MLS-4 minor interlock is specially designed for 8E/2,8E/4 unit drawer of GCS low-voltage withdrawable cabinet. By controlling the operation handle installed on the panel of drawer, the switch can achieve the function of on-off, testing, isolation, locking position in the scope of 360 degree.

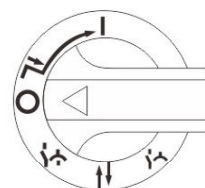


■ Schematic diagram for MLS-4 minor interlock



■ Dimensions diagram for MLS-4 minor interlock and panel connection

Position instruction of operating handle(it has testing location without drawing out)



- ⏻ Operation position: main switch is closed, and the components are locked.
- ⦿ Main switch opening position: primary circuit is open, control circuit is connected, and the components are locked.
- ⚡ Testing position: main switch is open, control circuit is connected, and the components are locked.
- ⏻ Plotting out position: both primary circuit and control circuit are disconnected.
- ⚡ Isolation position: plotted out by the distance of 30mm, primary circuit and control circuit are disconnected, and the components are locked.
- ⏻ After the handle is pressed inward, the button can be turned from position 0 to 1 so as to open or close the circuit breaker. Padlocks can be added on operating handle at three positions of main switch opening, testing, isolation, as a security guarantee. Maximum number of padlocks is three.

■ Note: If operated again, you have to hold down the button at one operation by hand, no pausing in the midway.

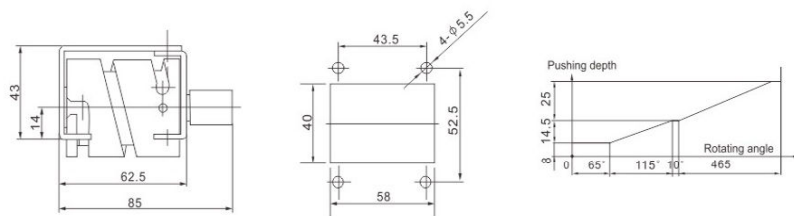


■ HD-1/2 pushing mechanism

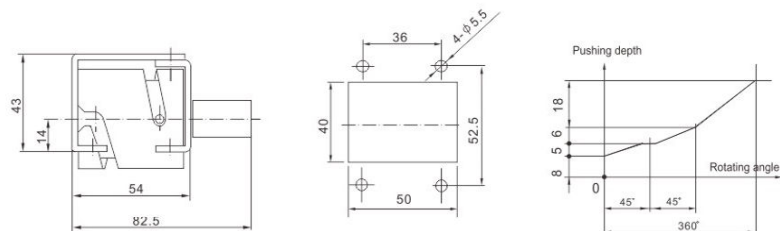
Specialty

HD-1/2 pushing mechanism has the advantages of simple structure, easy operation, labor saving, easy maintenance. It can achieve the exchange within on-off, testing, isolation, locking position in the rotating scope (HD-1 type 650, HD-2 type 360). It meets the requirements of Mechanical and Electrical equipment in National Standard of GB725.1.

Configuration and installation dimensions of HD-1 pushing mechanism



Configuration and installation dimensions of HD-2 pushing mechanism



■ NS special operating mechanism

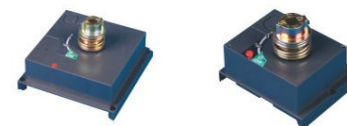
Expansion link



■ BLK.203.022-023

BLK.203.022 is the special expansion link for CZ3-1409/NS mechanism, BLK.203.023 is the special expansion link for CZ3-296/NS mechanism, and the default length of expansion link is 165mm. If you need the other length, please give clear indication when ordering.

Operating mechanism



■ CZ3-1409/NS ■ CZ3-296/NS

CZ3-1409/NS is the special operating mechanism for NS100~250A plastic shell switch.
CZ3-296/NS is the special operating mechanism for NS400~630A plastic shell switch.

Operating shaft



■ BLK.206.005

BLK.206.005 is the special operating shaft for CZ3-1409/NS and CZ3-296/NS mechanism, and the default length of operating spindle is 150mm. If you need the other length, please give clear indication when ordering.

Operating handle



■ D1~D2

D1 is special operating handle for CZ3-1409/NS mechanism
D2 is special operating handle for CZ3-296/NS mechanism

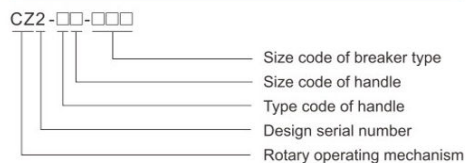


■ CZ2-A-□ Operating mechanism



■ CZ2-B-□ Operating mechanism

Type meaning of CZ2 rotary operating mechanism



Specialty

Adopting unique design and rotary structure, CZ2 operating mechanism can well realize circuit breaker function of disconnecting, connecting, and re-plot. With advantages of flexible operation, simple installation, and easy adjustment, its performance and quality are better than the similar products. This operating mechanism is matched with three rotary handle types of A, B, C, possessing good appearance, and may be selected according to user's requirement. The products are qualified which tested by National Electing Testing Power Distribution Quality Supervision and Inspection Center.

Application

This mechanism is used for plastic shell type circuit breaker such as series of CM1、NS、NM1、CDM1、LG、NF、S()、T()、TM30、SM30 and so on. It can achieve operation requirements of drawer cabinet, power distribution cabinet and power box on the panel by rotating handle.

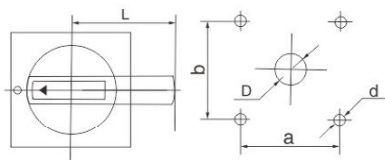
Type A handle installation dimensions



■ A type handle

Standard aluminum end square spindle length is 100mm
Powder aluminum end square spindle length is 150mm

■ Note: if you need special length of the square spindle, please give clear indication when ordering.

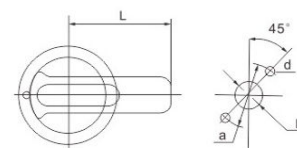


Handle size	A1	A2
D	42	Φ63
d	4.5	Φ5.5
a	65	88
b	65	88
L	60	140

Type B handle installation dimensions



■ B type handle



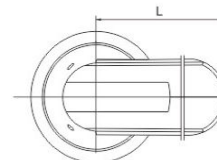
■ Note: if you need special length of the square spindle, please give clear indication when ordering.

Handle size	B1	B2	B3
D	Φ33	Φ33	Φ33
d	Φ4.5	Φ4.5	Φ4.5
a	Φ53	Φ53	Φ53
L	65	125	95

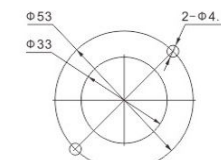
Type C handle location dimensions



■ C type handle



Handle size	C1	C2	C3
L	67	97	127



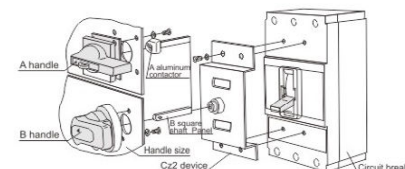
■ C4 Handle:

- 1.C4 handle is specially designed for 1/2 unit or 1/4 unit drawer.
2. The function of C4 handle is the same as CJG-2 handle

■ C1、C2、C3 handle:

- 1.C1、C2、C3 are used for the drawer with one unit and above or fixed isolation unit.
- 2.C1、C2、C3 Handle installation dimension.

Cz2 operational mechanism installation diagram

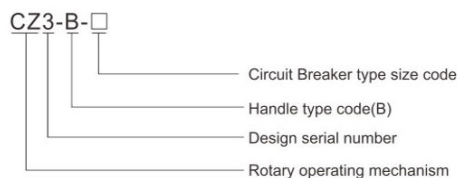


■ Note: the distance between center of handle and hinge should not be less than 100mm. if you need under-voltage handle, please give clear indication when ordering.



■ CZ3-B-□/operating mechanism

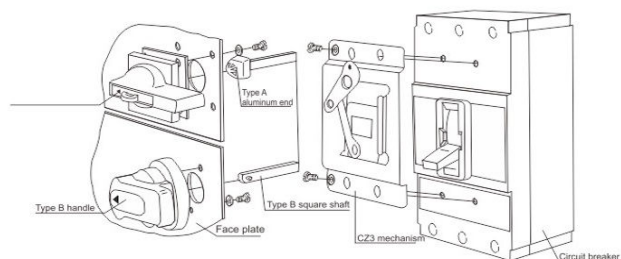
Type meaning



Main application and applicable scopes

The operating mechanism adopts the crank-slider principle. Slider drives the handle of circuit breaker, and the crank-slider mechanism can be operated by rotating the handle. It can achieve operation requirements of drawer cabinet, power distribution cabinet and power box on the panel, and realize plastic shell type circuit breaker function of disconnecting, connecting, and re-plot. The mechanism is flexible and stable, and can be applied in different positions.

Type CZ3 operating mechanism installation diagram

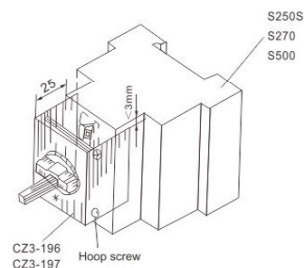


■ Hole dimensions diagram

■ Note: If you need the type A handle, please give clear indication when ordering.
The distance between center of handle and hinge should not be less than 100mm.
If you need under-voltage handle, please give clear indication when ordering.

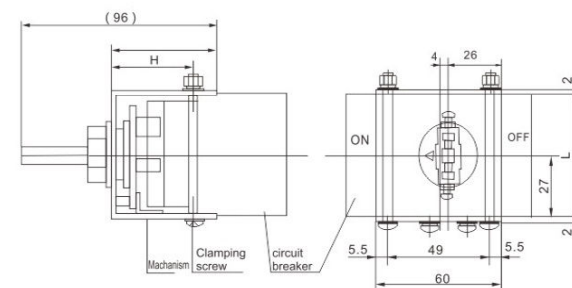
■ Note: Handle selection(type A,B or C), Please refer to the instruction on page.59.

Type and installation diagram of operating mechanism for ABB minitype circuit breaker



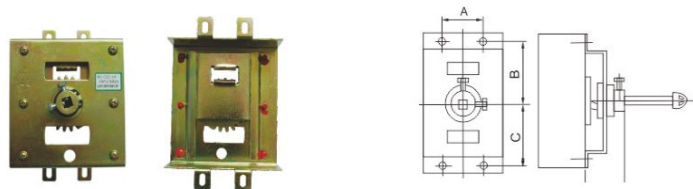
Type	circuit breaker	application
CZ3-196	S250(2-3P) S270(2-3P) S500(2-3P)	Suitable for GCS 1/2 unit 60° on - off
CZ3-197	S250(2-3P) S270(2-3P) S500(2-3P)	Suitable for GCS or other drawer 90° on - off

Type and installation diagram of operating mechanism for C45 and C65 circuit breaker



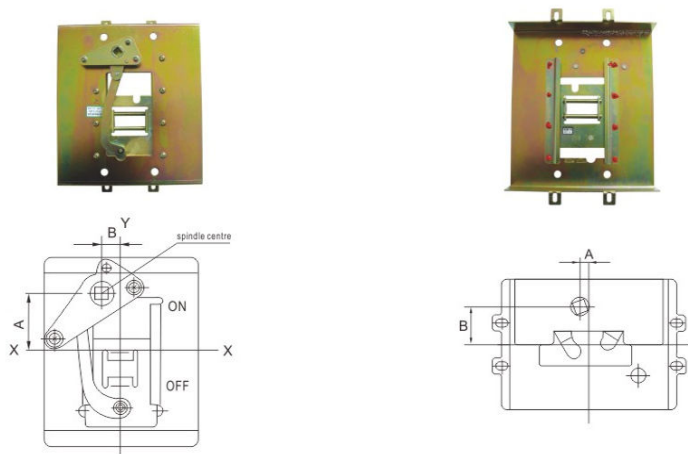
Number	Type	Matching switch type	Clamping screw	H	L	Remark
1	CZ3-184	C45/3P	M4 × 65	44	54	Suitable for MLS, GCK drawer switch cabinet, cubicle
2	CZ3-184F	C45/3P+auxiliary	M4 × 75	44	62	
3	CZ3-184.1	C45/4P	M4 × 85	44	72	
4	CZ3-184.4	C65/3P	M4 × 65	40	54	
5	CZ3-184.4F	C65/3P+auxiliary	M4 × 75	40	62	
6	CZ3-184.8	C65/4P	M4 × 85	40	72	
7	CZ3-184/L2	C45/2P+electric leakage	M4 × 90	44	63+13	
8	CZ3-184/L3	C45/3P+electric leakage	M4 × 105	44	90	

Configuration and installation dimensions for CZ2 operating mechanism



■ Configuration and installation dimensions for CZ2 operating mechanism

Configuration and installation dimensions for CZ3 operating mechanism



■ Configuration and installation dimensions for CZ3-□/A operating mechanism

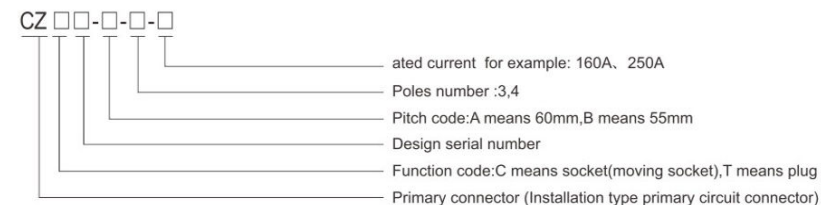
■ Configuration and installation dimensions for drawer CZ3-17□□ matched with GCS1/2

Installation dimensions and type A, B, C for circuit breaker matched with (type of CZ2 and CZ3) operating mechanism

Note:

1. Please give clear indication about the type of handle(A,B,C) or connecting rod when ordering
2. The default order is center type mechanism. If you need the type of plug in or plug out, please specify. Eccentric mechanism must indicate size A, size B, or detailed mechanism type provided by our company
3. In order to meet the matching requirements of various switchgear cabinet sets, it could be customized after receiving user's circuit breaker.
4. CZ2-131A and CZ2-132.1 mechanism only matches with switch seat, not matching with copper stud bolt. If you need copper stud bolt, please give clear indication when ordering.

CZ $\frac{C}{T}$ Type meaning



CZ $\frac{C}{T}$ structure characteristics

CZ $\frac{C}{T}$ series primary connector is mainly used as electrical connector of primary circuit in low voltage withdrawable switchgear set and control equipment, especially suitable for withdrawable switchgear such as GCK, BFC, GK, etc.

Application of CZ $\frac{C}{T}$ series primary connector

CZ $\frac{C}{T}$ primary series connector is developed as our patented product according to the customers' requirements. The shell is suppressed by DMC or PA66 unsaturated polyester molded plastic, and possesses the advantages of high strength, good insulation property, high flame retardant. The product conforms to the JB/T10323-2002 standard of "primary circuit connector for low voltage withdrawable switchgear set and control equipment".

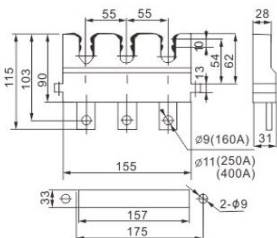
Main technical parameters

Parameters	Unit	Value
Rated voltage	V	380(660)
Rated Frequency	HZ	50(60)
Rated insulation voltage	V	660(1000)
Rated current	A	160, 250, 400, 630
Power frequency withstand voltage (1min)	KV	2.5
Rated short-time withstand current (IS)	KA	30(630A)
Combustibility	级	FV-0
CTI	V	>400
Long-term heat resistance(temperature index)	—	>155

Configuration and installation dimensions for CZC1-B-3-160A、250A、400A



■ CZC1-B-3-160A、250A、400A Primary socket

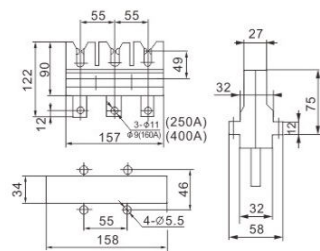


■ Mounting hole dimensions diagram

Configuration and installation dimensions for CZC3-B-3-160A, 250A, 400A



■ CZC3-B-3-160A、250A、400A Primary socket



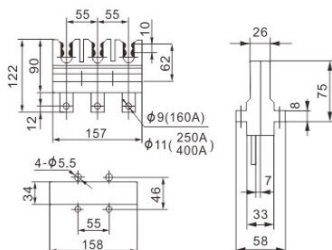
■ Mounting hole dimensions diagram

■ CZC2-B-3-630 is the same as CZC3-B-3-630.

Configuration and installation dimensions for CZC2-B-3-160A, 250A, 400A



■ CZC2-B-3-160A、250A、400A Primary socket

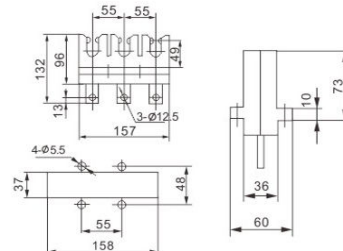


■ Mounting hole dimensions diagram

Configuration and installation dimensions for CZC43-B-3-630



■ CZC3-B-3-630 Primary socket



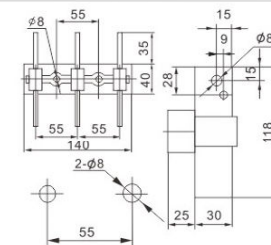
■ Mounting hole dimensions diagram

Low-Voltage Switchgear Accessories

Configuration and installation dimensions for CZT1-B-3-160A, 250A, 400A



■ CZT1-B-3-160A、250A、400A primary plug

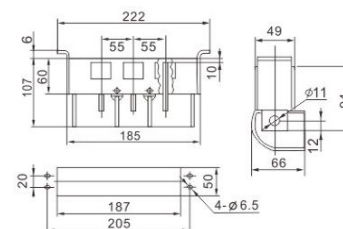


■ Mounting hole dimensions diagram

Configuration and installation dimensions for CZT2-B-3-160A、250A



■ CZA2-B-3-160A、250A primary plug

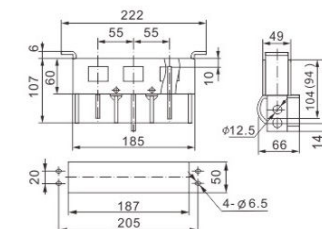


■ Mounting hole dimensions diagram

Configuration and installation dimensions for CZT2-B-3-400A、630A



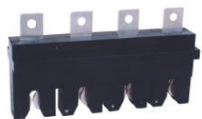
■ CXT2-B-3-400A、630A primary plug



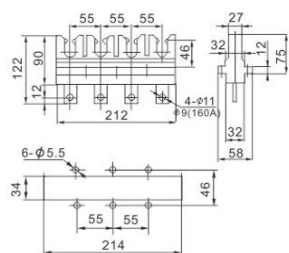
■ Note: Dimensions in brackets for CZT2.1 ■ Mounting hole dimensions diagram

Characteristics: In order to better meet the users' needs, a new CZT2.1 type primary connector is developed based on improved design of original CZT2. The product has passed the Tianjin power distribution and electrical control equipment inspection type testing, and conforms to the JB/T10323-2002 standard of "primary circuit connector for low voltage withdrawable switchgear set and control equipment". Mounting hole size of CZT2.1 type primary connector is the same as that of CZT2.

Configuration and installation dimensions
for CZC3-B-4-160A、250A、400A



■ CZC3-B-4-160A、250A、400A (4 poles) Primary socket

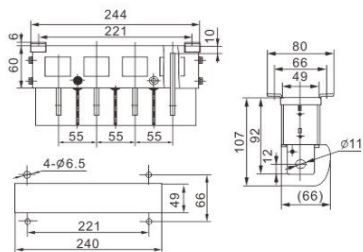


■ Mounting hole dimensions diagram

Configuration and installation dimensions
for CZC4-B-4-160A、250A

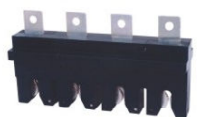


■ CZC3-B-4-160A、250A (4 poles) Primary socket

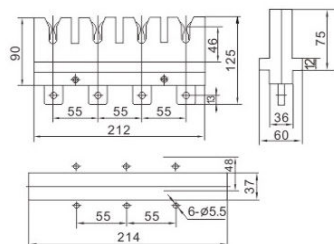


■ Mounting hole dimensions diagram

Configuration and installation dimensions
for CZC3-B-4-630A



■ CZC3-B-4-630A (4 poles) Primary socket

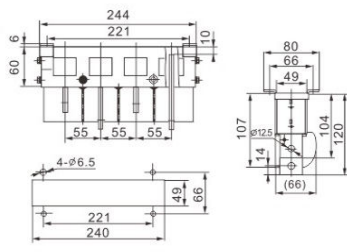


■ Mounting hole dimensions diagram

Configuration and installation dimensions
for CZC4-B-4-400A、630A



■ CZC3-B-4-400A、630A (4 poles) Primary socket



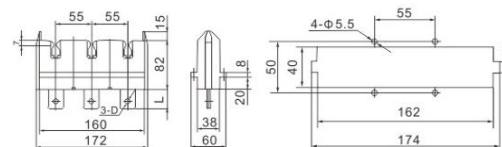
■ Mounting hole dimensions diagram

CZC5-B-3-100A、160A、250A、400A、630A primary socket



■ **Specialty:**
The CZC5 socket with added guiding device has solved the defects existing in the drawer cabinet without guide rail.

Configuration and installation dimensions
for CZC5-B-3-100A、160A、250A、400A、630A primary socket



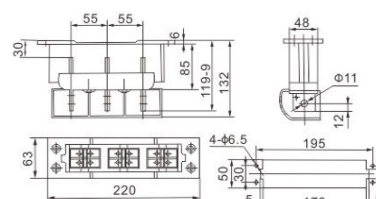
■ Mounting hole dimensions diagram

	100A、160A	250A、400A	630A
D	Ø 9	Ø 11	Ø 12.5
L	32	32	36

Configuration and installation dimensions
for CZT5-B-3-100A、160A、250A



■ CZT5-B-3-100A、160A、250A Primary socket

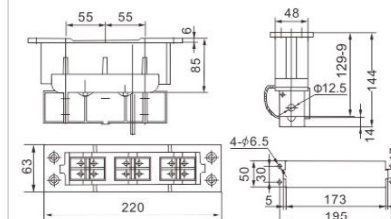


■ Mounting hole dimensions diagram

Configuration and installation dimensions
for CZT5-B-3-400A、600A



■ CZT5-B-3-400A、600A Primary socket



■ Mounting hole dimensions diagram

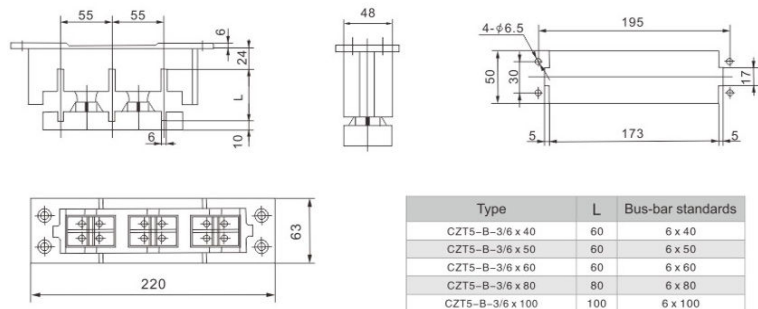
CZT5-B-3/6X□shell



Specialty:

The CZT5 shell can be directly used to clamp bus-bar into straight line, and doesn't need other vertical bus-bar clamp (small row support).

Type and installation dimensions for CZT5-B-3/6X□ shell



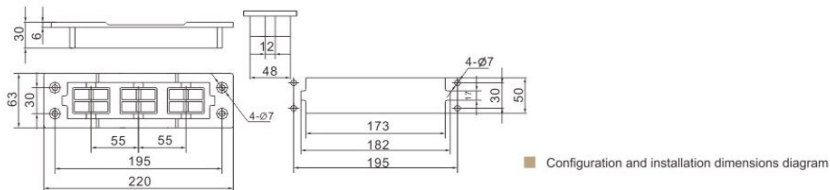
■ Mounting hole dimensions diagram

Configuration and installation dimensions for CZT5-B-3/6□ tripolar shell



Characteristics:

CZT5-B-3/6 tripolar shell is improved on the conventional shell CZT5-B-3/6X□, replacing the flap. The protection level has reached IP2X in compliance with GB7251.1 requirements. It is available to reduce installation cost.



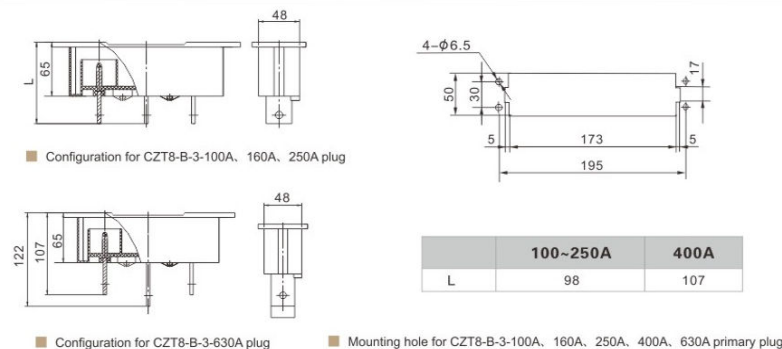
Novel primary connector: CZT8-B-3-100A, 160A, 250A, 400A, 630A primary plug



Characteristics:

A novel plug of CZT8 is improved on original CZT5 technology. Improved contact blade is embedded into the plastic shell to make contact blade and plastic as a whole, so that fixed contact blade could no longer move, improving security. The installation dimensions is the same as the CZT5 plug.

Configuration and Mounting hole dimensions diagram for CZT8-B-3-100A, 160A, 250A, 400A, 630A primary plug

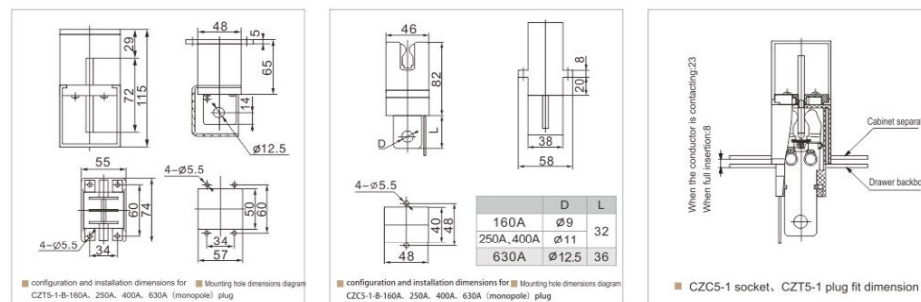


CZC(T)5-1-B monopole primary connector



Characteristics:

CZC(T)5-1-B monopole primary connector without flap can reach protection level of IP2X, and conform to the requirements of GB7251.1. It can be combined to meet the needs of any poles number, which is convenient and flexible.



Primary connector: CZC5-B-4-160A、250A、400A、630A one socket

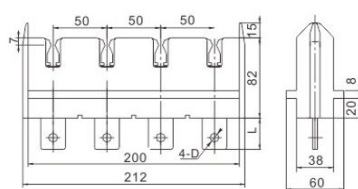


■ Characteristics:

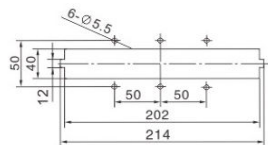
A quadrupole socket of CZC5 with added guiding device has solved the defects existing in the drawer cabinet without guide rail.

■ CZC5-B-4-160A、250A、400A、630A socket

Configuration and installation dimensions for CZC5-B-4-160A、250A、400A、630A socket



■ Mounting hole size



	160A	250A、400A	630A
D	φ 9	φ 11	φ 12.5
L	32	36	

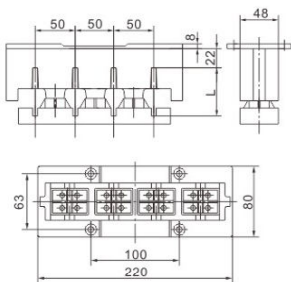
Primary connector: CZC5-B-4/6X□ shell



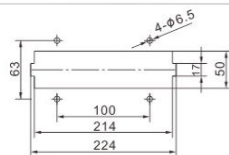
■ Characteristics:

CZC5 quadrupole shell can be directly used to clamp bus-bar into straight line, and doesn't need other vertical bus-bar clamp (small row support).

CZC5-B-4/6X□ shell type: installation dimensions and supporting table



■ Mounting hole dimensions diagram



Type	L	standards for bus-bar
CZT5-B-4/6 × 40	60	6 × 40
CZT5-B-4/6 × 50	60	6 × 50
CZT5-B-4/6 × 60	60	6 × 60
CZT5-B-4/6 × 80	80	6 × 80
CZT5-B-4/6 × 100	100	6 × 100
CZT5-B-4/6 × 120	120	6 × 120

Quadrupole Primary connector : CZT5-B-4-160A、250A、400A、630A plug



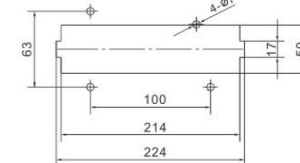
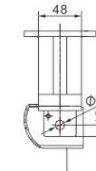
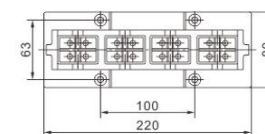
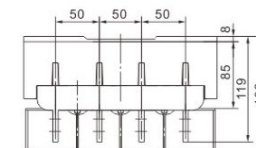
■ CZT5-B-4-160A、250A plug



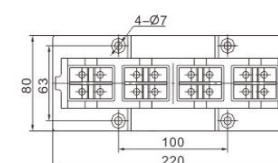
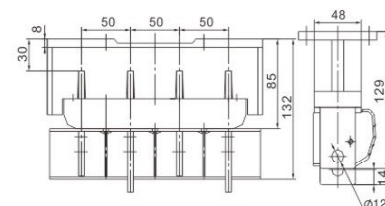
■ CZT5-B-4-400A、630A plug

■ Characteristics: uses lattice cell structure does not install the active door but protection level reached 1P2X meeting requirements of GB7251.1. CZT5 quadrupole plug adopting grid structure without flap can reach protection level of 1P2X, and conform to the requirements of GB7251.1.

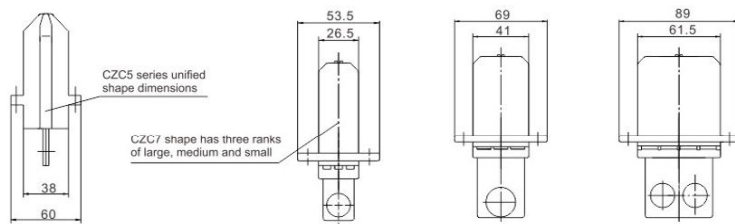
Configuration and installation dimensions for CZT5-B-4-160A、250A



Configuration and installation dimensions for CZT5-B-4-400A、630A

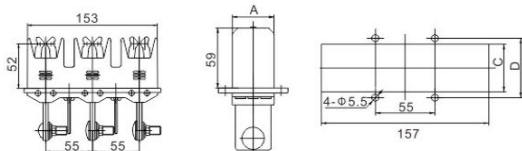


CZCT series primary connector



■ **Characteristics:** More economical small-current and more reliable large-current.

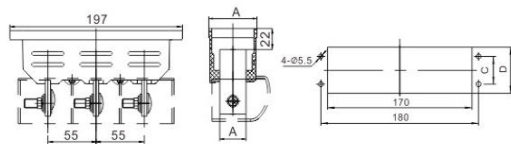
Configuration and mounting dimensions for



Type	A	C	D	Bolt
CZC7-B-3-125A				
CZC7-B-3-160A	26.5	28	40	M8
CZC7-B-3-250A				

Type	A	C	D	Bolt
CZC7-B-3-400A	41.5	44	55	M10
CZC7-B-3-630A	61.5	64	75	

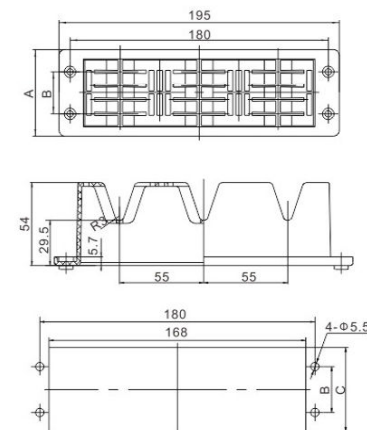
Configuration and mounting dimensions for CZC7-B-3-125A/160A/250A/400A/630A primary connector



Type	A	B	C	D	Bolt
CZC7-B-3-125A	20				
CZC7-B-3-160A	39	20	36	M8	
CZC7-B-3-250A	25				

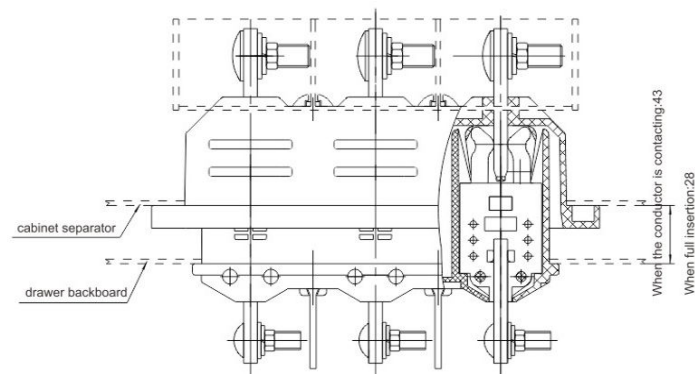
Type	A	B	C	D	Bolt
CZ17-B-3-400A	30	55	30	51	M10
CZ17-B-3-630A	50	77	45	71	

Configuration and mounting dimensions for primary wire cover

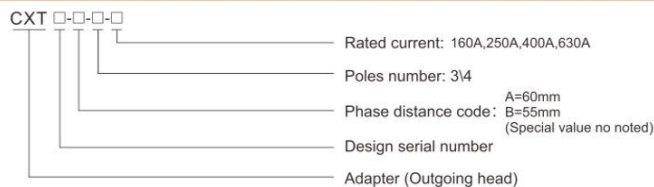


Code	A	B	C	Remark
DCJ.8XJ.300.007	62	30	55	For 250A
DCJ.8XJ.300.008				For 125A, 160, 400A
DCJ.8XJ.300.009	81	45	74	For 630A

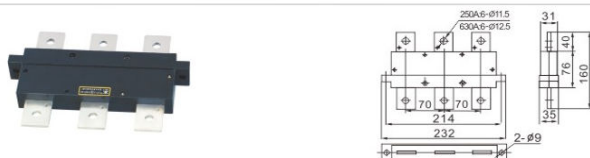
Installation diagram



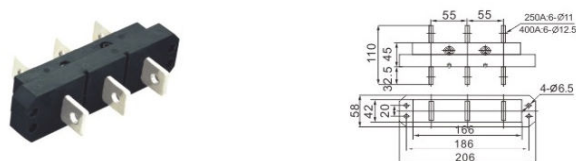
Type and meaning for CXT□ type series adapter



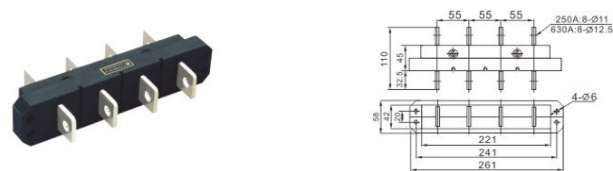
Configuration and installation dimensions for CXT1-3-160A\250A\400A\630A adapter



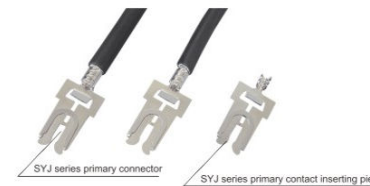
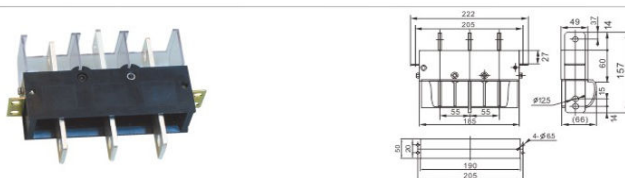
Configuration and installation dimensions for CXT2-B-3-160A\250A\400A\ 630A adapter



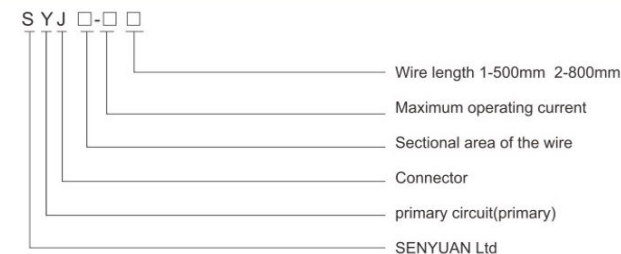
Configuration and installation dimensions for CXT2-B-4-160A\250A\400A\ 630A adapter



Configuration and installation dimensions for CXT3-B-3-160A\250A\400A\ 630A adapter



Type meaning



Application scopes

SYJ type connector is electrical dynamic link contact of primary circuit in function unit of GCS (MLS) type low voltage withdrawable switchgear. It is available for alternating current with frequency of 50 Hz, rated voltage of 380 (660)V, rated current 50-220(225)A in primary circuit loop.

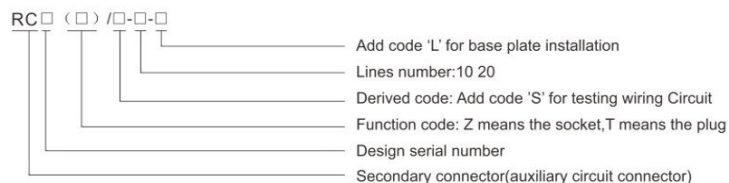
SYJ connector size

Product name	type	size	unit
GCS(MLS) switchgear set-SYJ type connector		With wire 500 mm	
SYJ connector (50A)	SYJ-10-50 I	10mm ² × 500mm	PIECES
SYJ connector (63A)	SYJ-16-63 I	16mm ² × 500mm	PIECES
SYJ connector (100A)	SYJ-25-100 I	25mm ² × 500mm	PIECES
SYJ connector (125A)	SYJ-35-125 I	35mm ² × 500mm	PIECES
SYJ connector (160A)	SYJ-50-160 I	50mm ² × 500mm	PIECES
SYJ connector (200A)	SYJ-70-200 I	70mm ² × 500mm	PIECES
GCS(MLS) switchgear set-SYJ type connector		(CP primary contact inserting piece)With wire length of 800 mm	
SYJ connector (50A)	SYJ-10-50 II	10mm ² × 800mm	PIECES
SYJ connector (63A)	SYJ-16-63 II	16mm ² × 800mm	PIECES
SYJ connector (100A)	SYJ-25-100 II	25mm ² × 800mm	PIECES
SYJ connector (125A)	SYJ-35-125 II	35mm ² × 800mm	PIECES
SYJ connector (160A)	SYJ-50-160 II	50mm ² × 800mm	PIECES
SYJ connector (200A)	SYJ-70-200 II	70mm ² × 800mm	PIECES

Ordering instructions :

- If you only need the connector, not the wires, please give clear indication when ordering.
- The original type of CP series primary contact inserting piece is now replaced by SYJ inserting piece developed by Senyuan Ltd.

Type meaning for RC series secondary connector



Usage

RC series secondary connector is mainly used as electrical connector of auxiliary circuit in low voltage withdrawable switchgear set and control equipment, especially suitable for withdrawable switchgear such as GCK, BFC, GK, etc.

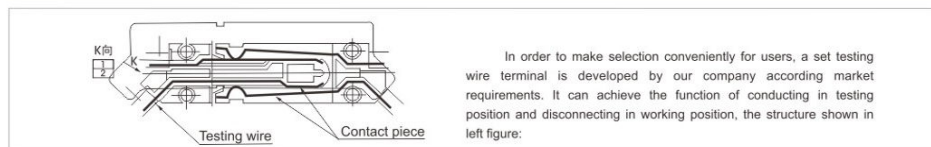
Structural features

RC secondary series connector is developed as our patented product according to the customers' requirements, adopting close structure with high security and reliability. RC1, RC2 with automatic guiding device can be inserted in and pulled out conveniently and accurately. RC3 replaces the mounting bracket into automatic regulating structure to reduce installation dimension, and provides two selections of panel installation and base plate installation. The product conforms to the JB/T10263-2000 standard of "auxiliary circuit connector for low voltage withdrawable switchgear set and control equipment". The shell is made of DMC or PA66 unsaturated polyester molded plastic. Its high strength, and possesses the advantages of high strength, good insulation property, high flame retardant.

Main technical parameters

parameters	unit	value
nominal voltage	V	220(380)
rated frequency	Hz	50
nominal insulation voltage	V	380(660)
rated current	A	20
power frequency withstand voltage	kV	2.5
Shell comparative tracking index(CTI)	V	≥ 200

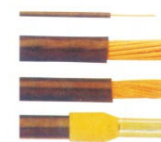
Testing wiring instructions



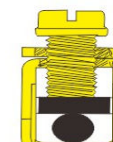
■ The function is optional for users. When needed, please add S at in the original type (e.g RC2/s-10). The standard configuration only change second line in first group (means that only No.2 terminal of every secondary connector stands for testing wiring circuit), other remaining unchanged. If you need add testing wire number or other special requirements, please give clear indication when ordering.



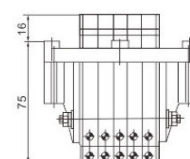
■ RC1-□ secondary connector



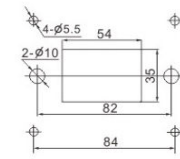
■ RC terminal diagram (RC1/RC2/RC3/RC5)



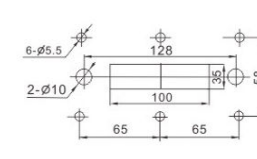
Configuration dimensions for RC1(Z) secondary socket



■ Configuration dimensions diagram for RC1(Z) secondary socket

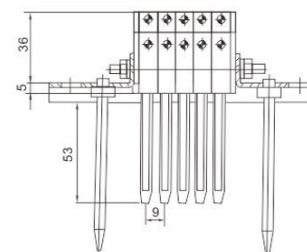


■ Mounting hole dimensions diagram for RC1(Z)-10 secondary socket

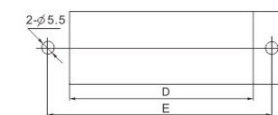


■ Mounting hole dimensions diagram for RC1(Z)-20 secondary socket's installation

Configuration dimensions for RC1(T) secondary plug



■ Configuration dimensions for RC1(T) secondary plug



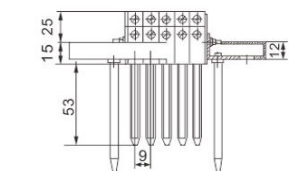
■ Mounting hole dimensions diagram for RC1(T) secondary plug

TYPE	Line number	D	E
RC1(T)-10	10	104	118
RC1(T)-20	20	150	164

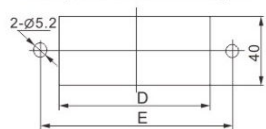


RC2-□ secondary connector

Configuration and mounting hole dimensions for RC2(T)secondary plug



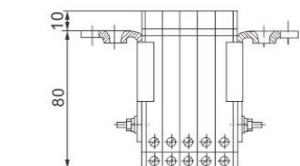
Configuration dimensions diagram



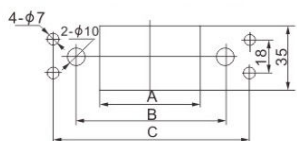
Mounting hole dimensions diagram

TYPE	D	E
RC2(T)-4	72	90
RC2(T)-6	81	99
RC2(T)-8	90	108
RC2(T)-10	99	117
RC2(T)-12	108	126
RC2(T)-14	118	136
RC2(T)-16	126	145
RC2(T)-18	135	154
RC2(T)-20	144	163
RC2(T)-22	153	172
RC2(T)-24	162	181
RC2(T)-26	171	190
RC2(T)-28	180	199
RC2(T)-30	189	208
RC2(T)-32	198	217
RC2(T)-34	207	226

Configuration and mounting hole dimensions for RC2(Z)secondary plug



Configuration dimensions diagram



Mounting hole dimensions diagram

Note: If you need other size not listed in the table, it can be provided according to your requirements.

TYPE	A	B	C
RC2(Z)-4	27	55	75
RC2(Z)-6	36	64	84
RC2(Z)-8	45	73	93
RC2(Z)-10	54	82	102
RC2(Z)-12	63	91	111
RC2(Z)-14	73	100	120
RC2(Z)-16	82	109	129
RC2(Z)-18	91	118	138
RC2(Z)-20	100	127	147
RC2(Z)-22	109	136	156
RC2(Z)-24	118	145	165
RC2(Z)-26	127	154	174
RC2(Z)-28	136	163	183
RC2(Z)-30	145	172	192
RC2(Z)-32	154	181	201
RC2(Z)-34	163	190	210

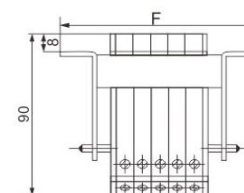


RC3-□ secondary connector (Panel installation)

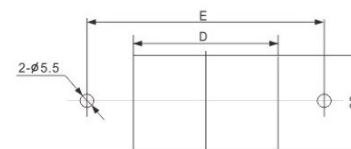


RC3-□ secondary connector (base plate installation)

Configuration dimensions diagram for RC3(Z) (Panel installation) secondary socket



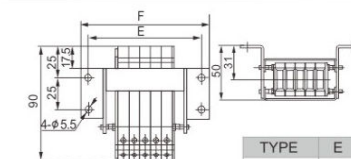
Configuration dimensions
RC3(Z) (Panel installation) secondary socket



Configuration dimensions diagram
for RC3(Z) (Panel installation) secondary socket

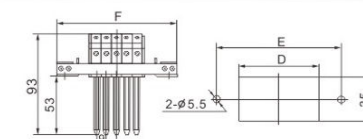
TYPE	D	E	F
RC3(Z)-4	25	63	76
RC3(Z)-6	34	72	85
RC3(Z)-8	43	81	94
RC3(Z)-10	52	90	103
RC3(Z)-12	61	99	112
RC3(Z)-14	70	110	123
RC3(Z)-16	79	120	133
RC3(Z)-18	88	130	143
RC3(Z)-20	98	140	153
RC3(Z)-22	107	149	162
RC3(Z)-24	116	158	171
RC3(Z)-26	125	167	180
RC3(Z)-28	134	176	189
RC3(Z)-30	143	185	198
RC3(Z)-32	152	194	207
RC3(Z)-34	161	203	216

Configuration dimensions diagram for RC3(Z)-L (Base plate installation) secondary socket



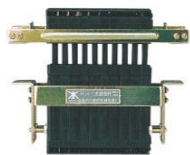
TYPE	E	F
RC3-10-L	94	107
RC3-20-L	144	157

Configuration dimensions diagram for RC3(T) secondary plug

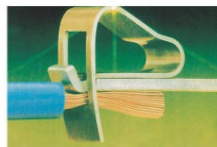


Configuration and mounting hole dimensions diagram
for RC3(Z) secondary plug

TYPE	A	B	C
RC3(T)-4	31	67	82
RC3(T)-6	40	76	91
RC3(T)-8	51	85	100
RC3(T)-10	60	94	109
RC3(T)-12	69	104	119
RC3(T)-14	78	114	129
RC3(T)-16	87	124	138
RC3(T)-18	100	134	147
RC3(T)-20	110	144	159
RC3(T)-22	119	153	168
RC3(T)-24	128	162	177
RC3(T)-26	137	171	186
RC3(T)-28	147	180	195
RC3(T)-30	157	189	204
RC3(T)-32	167	198	213
RC3(T)-34	177	207	222

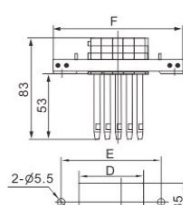


RC3-□ secondary connector



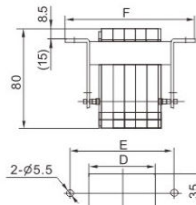
RC 4 wiring terminal diagram

Configuration and mounting hole dimensions diagram for RC4 secondary connector



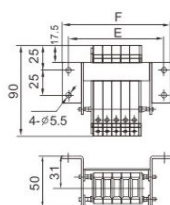
mounting hole dimensions diagram for RC4(T)-□

TYPE	D	E	F
RC4(T)-10	60	94	109
RC4(T)-20	110	144	159



mounting hole dimensions diagram for RC4(Z)-□ panel installation

TYPE	D	E	F
RC4(Z)-10	52	90	103
RC4(Z)-20	98	140	153



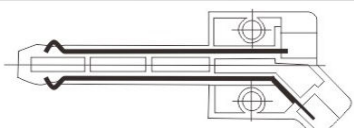
mounting hole dimensions diagram for RC4(Z)-□ -L base plate installation

TYPE	E	F
RC4(Z)-10-L	94	107
RC4(Z)-20-L	144	157

Rc5 secondary connector : Configuration and installation dimensions are the same as RC3 type, as well as divided into panel installation and base plate installation.



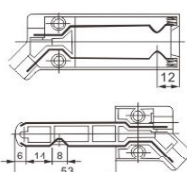
RC5-□ secondary plug



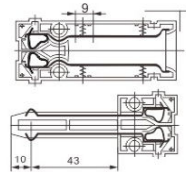
Schematic diagram for RC5-□ secondary plug

Characteristics: RC plug's copper contact is mostly placed in plastic slot, only exposing the head part contact, which is more safe and reliable.

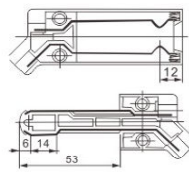
Structure schematic diagram for RC series secondary connector



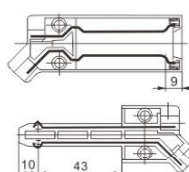
structure schematic diagram for RC1/RC2/RC3



structure schematic diagram for RC4



RC1/S RC2/S RC3/S structure diagram under the disconnecting state of working position of



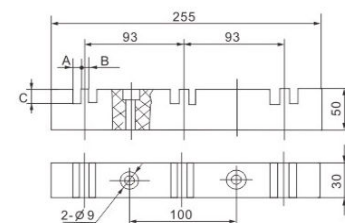
Structure diagram for Rc5

Low-Voltage Switchgear Accessories



AMJ1 three-phase dual-slot bus-bar clamp

Configuration and installation dimensions for AMJ1 three-phase dual-slot bus-bar clamp



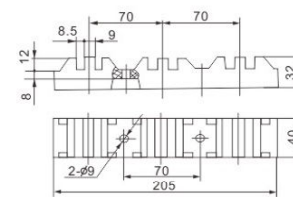
Type and installation dimensions table for AMJ1 three-phase dual-slot bus-bar clamp

TYPE	A	B	C	Applicable copper bar
AMJ1-6×25/3×2	7	7	25	6×50~6×120
AMJ1-8×25/3×2	9	8	25	8×50~8×120
AMJ1-10×25/3×2	11	9	25	10×50~10×120
AMJ1-10×15/3×2	10.5	9	15	10×30~10×120



Configuration and installation dimensions diagram for AMJ2B,AMJ2C Single bus-bar clamp

Configuration and installation dimensions for AMJ3 -8X12/3X2 three-phase dual-slot bus-bar clamp

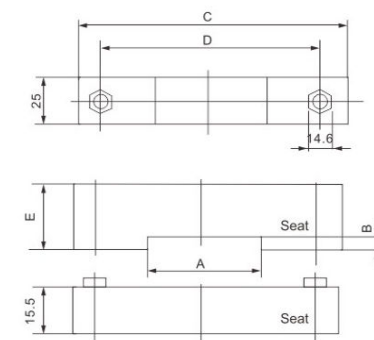


Note: When ordering, please indicate the color of black or white.



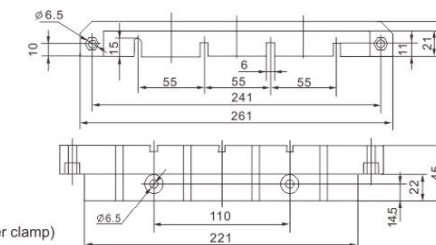
AMJ2B,AMJ2C Single bus-bar clamp

Configuration and installation dimensions for AMJ2B,AMJ2C single bus-bar clamp



Type and installation dimensions table for AMJ2B, AMJ2C Single bus-bar clamp

TYPE	A	B	C	D	E	Applicable copper bar
AMJ2B-4×40/1	41	3.8				4×40
AMJ2B-5×40/1	41	4.8				5×40
AMJ2B-6×40/1	41	5.8				6×40
AMJ2B-5×50/1	51	4.8				5×50
AMJ2B-6×50/1	51	5.8				6×50
AMJ2B-10×50/1	51	9.8				10×50
AMJ2B-6×60/1	61	5.8				6×60
AMJ2B-8×60/1	61	7.8				8×60
AMJ2B-10×60/1	61	9.8				10×60
AMJ2C-6×80/1	81	5.8				6×80
AMJ2C-8×80/1	81	7.8				8×80
AMJ2C-10×80/1	81	9.8				10×80
AMJ2C-8×100/1	101	7.8				8×100
AMJ2C-10×100/1	101	9.8				10×100
AMJ2C-10×120/1	121	9.8				10×120



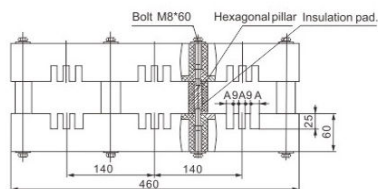
AMJ9 bus-bar clamp



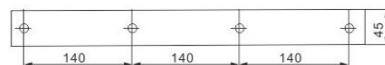
■ AMJ9 bus-bar clamp

Specialty:

AMJ9 bus-bar clamp is suppressed by high-quality SMC, and possesses the advantages of high strength, good insulation property, high flame retardant. It can withstand short-circuit high intensity current up to 80KA.



■ Configuration and installation dimensions for AMJ9 bus-bar clamp



TYPE	A	Suitable copper bar	Remark
AMJ9-10×25/3×3	11	10×100, 120	Applicable to corresponding hexagonal pillar and insulating pad
AMJ9-12×25/3×3	13	12×100, 120	AMJ9 bus-bar clamp type and supporting table

■ type and supporting table for MJ9bus-bar clamp

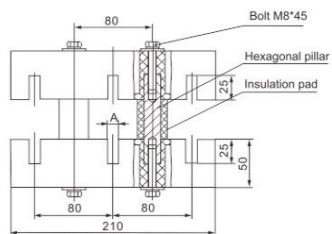
AMJ10 bus-bar clamp



■ AMJ10 bus-bar clamp

Specialty:

AMJ10 bus-bar clamp is suppressed by high-quality SMC, and possesses the advantages of high strength, good insulation property, high flame retardant. It is suitable to fix primary circuit bus-bar in low voltage withdrawable switchgear such as GCK, BFC, GK, etc., and possesses advantage of convenient operation and installation.



■ Configuration and installation dimensions for AMJ10 bus-bar clamp

TYPE	A	Suitable copper bar	Remark
AMJ10-5×25/3×1	6	5×50 More than copper bar	Applicable to corresponding hexagonal pillar and insulating pad
AMJ10-6×25/3×1	7	6×50 More than copper bar	Applicable to corresponding hexagonal pillar and insulating pad
AMJ10-8×25/3×1	9	8×50 More than copper bar	Applicable to corresponding hexagonal pillar and insulating pad
AMJ10-10×25/3×1	11	10×50 More than copper bar	Applicable to corresponding hexagonal pillar and insulating pad

■ type and supporting table for MJ910bus-bar clamp



■ XP1 SMALL SUPPORT ROW

■ XP3 quadrupole small support row

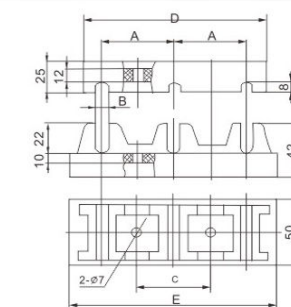
Type meaning for XP series small support row



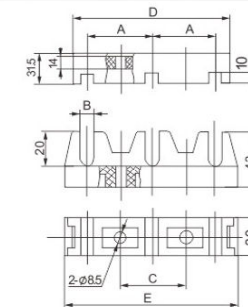
Specialty:

The product is suppressed by high-quality DMC unsaturated polyester, and possesses the advantages of high strength, good insulation property, high flame retardant. It is suitable to fix vertical bus-bar in low voltage withdrawable switchgear such as GCK, GZL, and other electronically controlled distribution cabinet.

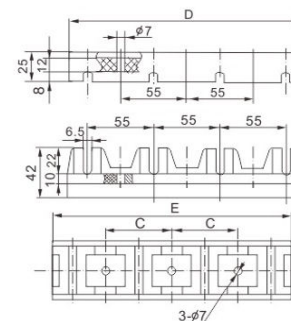
Type and installation dimensions for XP small support row



■ Configuration and installation dimensions for XP (1, 2) small support row



■ Configuration and installation dimensions for XP3 quadrupole small support row



■ Configuration and installation dimensions for XP3 small quadrupolar platoon

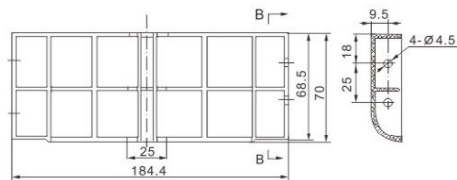
Type and size	A	B	C	D	E
XP1-55×5	55	5	55	140	160
XP1-55×7	55	7	55	140	160
XP1-55×8.5	55	8.5	55	140	160
XP1-60×7	60	7	60	150	170
XP1-60×8.5	60	8.5	60	150	170
XP1-50×8.5	50	8.5	50	140	160
XP2-55×7	55	7	55	140	150
XP2-55×9	55	9	55	140	150
XP3-55×6.5	55	6.5	55	195	199

■ Model Specifications of XP small platoon

Type and installation dimensions for HM flap



■ HM flap

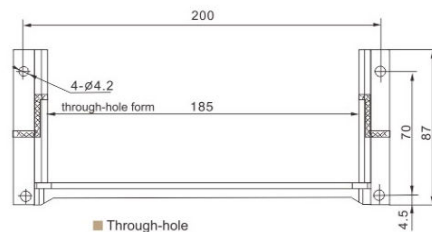


■ Note: Suitable for primary connector with 55 center distance

Type and size for HMD flap guide element



■ HMD flap guide element

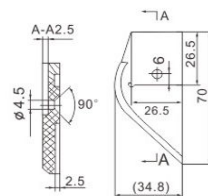


■ Through-hole

Type and size for HMT2-1 flap lift plate



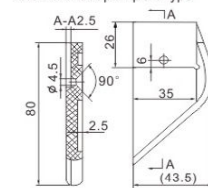
■ HMT2-2 flap lift plate



■ Configuration and installation dimensions for HMT2-2 flap lift plate Type



■ HMT2-1 flap lift plate



■ Configuration and installation dimensions for HMT2-1 flap lift plate

TYPE	Remark
HMT2-1	Suitable for CZC3(CZC2) primary socket 630A
HMT2-2	Suitable for CZC2,CZC3 primary socket 160A/250A,400A

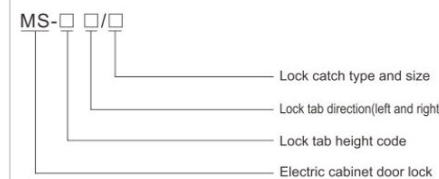


■ MS series small door lock

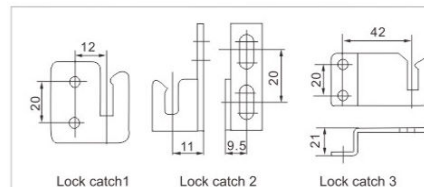
■ Specialty

MS type door lock possesses advantages of small volume, good appearance, easy installation and operation, and is suitable for different switchgear set by changing the lock tab and lock catch. Besides, it can be used for left and right opening door. MS-type door lock is used to lock the switchgear door in GCK electronically controlled center and other electric cabinets.

Type meaning for MS Small door lock

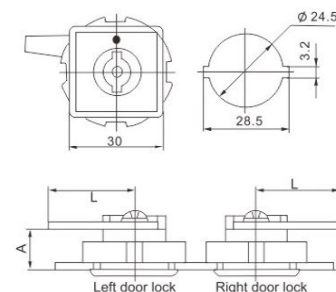


Dimensions for MS door lock lock catch



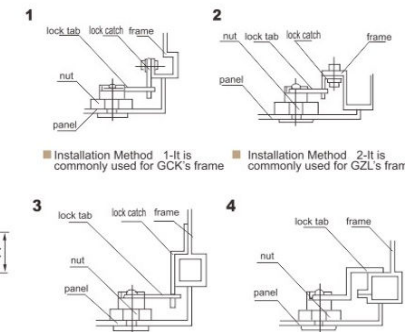
■ Notes : Please specify the left or right lock catch when ordering.

Installation method and dimensions for MS door lock Left door lock



■ Mounting hole dimension

■ Installation method schematic diagram for MS small door lock



■ Installation Method 3-It is commonly used for GCK's frame

■ Installation Method 4-It is used for ordinary frame

Type	lock tab height(A)	L	Lock tab direction	Installation direction	Latch size	remarks	
MS-1 Left	16	30	Left	way to install 1	1		
MS-1 right			right				
MS-2 Left			Left	way to install 1			
MS-2 right			right				
MS-3 Left/2			Left	way to install 2			2 Left
MS-3 right/2			right				2 right
MS-3 Left/3			Left	way to install 3			3 Left
MS-3right/3			right				3 right
MS-4 Left	20	28	Left	way to install 4	no latch		
MS-4 right			right				
MS-5 Left	40	32	Left	way to install 4	no latch		

■ Type and installation dimensions table for MS door lock

Type	lock tab height(A)	L	Lock tab direction	Installation direction	Latch size	remark
MS-5 right	40	32	right	way to install 4		no latch
MS-6 Left	48	34	Left	way to install 4		no latch
MS-6 right			right			
MS-7 Left	53	34	Left			no latch
MS-7 right			right			
MS-8 Left	35	37	Left			no latch
MS-8 right			right			
MS-9 Left	18.5	28	Left			no latch
MS-9 right			right			
MS-10 Left	43	29	Left			no latch
MS-10 right			right			

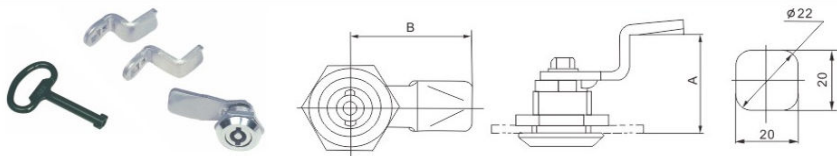
Type meaning for MS electrical cabinet



Specialty:

MS2, MS3 electric cabinet door locks are made of metal, plating decorated chrome decoration the surface, and possesses advantages of shiny appearance, equipment with a spring which can prevent from vibration. They are used to lock the switchgear door in low voltage distribution cabinets and other electric cabinets.

Configuration and installation dimensions for MS2 door lock



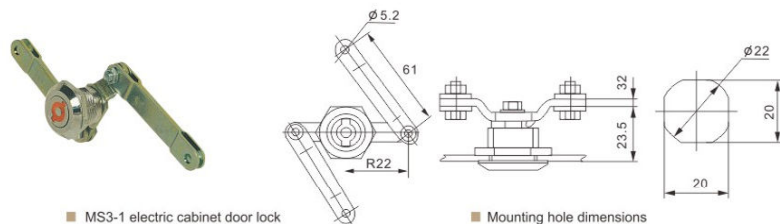
■ MS2 door lock series table

Type	Lock tab height code	Lock tab height A	Lock tab height B
MS2-1	1	18	45
MS2-2	2	34	39
MS2-3	3	42	38
MS2-4	4	49	38
MS2-5	5	24	39
MS2-6	6	22	39
MS2-7	7	45	38
MS2-8	8	72	52
MS2-9	9	49	42
MS2-10	10	49	30
MS2-11	11	52	38
MS2-12	12	28	38

■ Mounting hole dimensions

Type	Lock tab height code	Lock tab height A	Lock tab height B
MS2-13	13	47	42
MS2-14	14	75	49
MS2-15	15	34	60
MS2-16	16	65	37.5
MS2-17	17	46	33.5
MS2-18	18	45	50
MS2-19	19	56	36.5
MS2-20	20	36.5	38
MS2-21	21	60	38
MS2-22	22	38.5	38
MS2-23	23	31	46
MS2-24	24	39	41

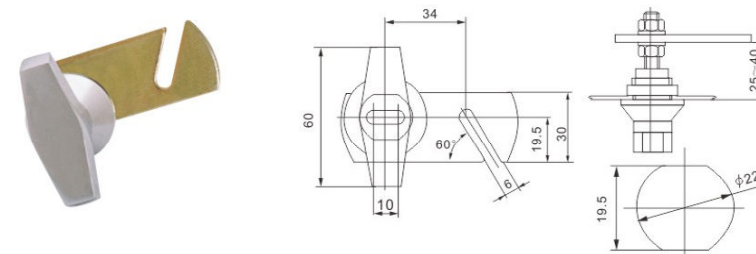
Configuration and installation dimensions for MS3-1 electric cabinet door lock



■ MS3-1 electric cabinet door lock

■ Mounting hole dimensions

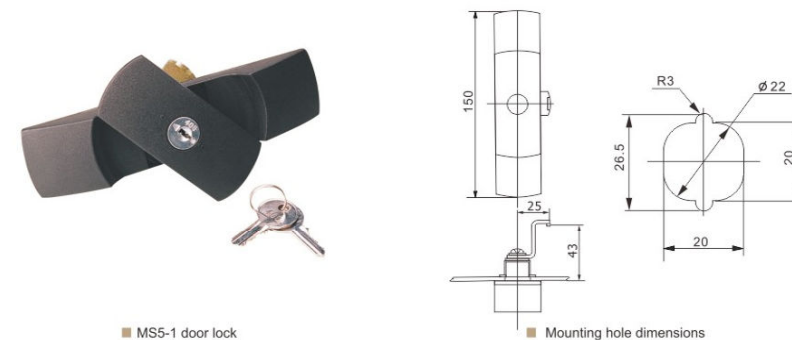
Configuration and installation dimensions for MS5-1 door lock



■ MS5-1 door lock

■ Mounting hole dimensions

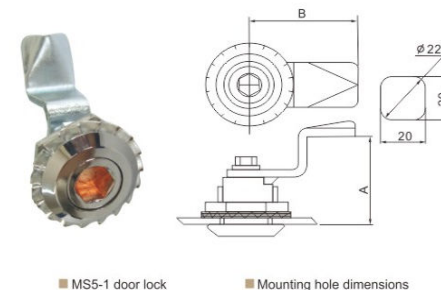
Configuration and installation dimensions for MS6-1 door lock



■ MS6-1 door lock

■ Mounting hole dimensions

MS7 electric cabinet door lock



■ MS7-1 door lock

■ Mounting hole dimensions

Type	Lock tab height code	Lock tab height A	Lock tab height B
MS7-1	1	47	42
MS7-2	2	34	39
MS7-3	3	42	38
MS7-4	4	49	38
MS7-5	5	24	39
MS7-6	6	22	39
MS7-7	7	45	38
MS7-8	8	72	52
MS7-9	9	49	42
MS7-10	10	49	30
MS7-11	11	52	38
MS7-12	12	28	38
MS7-13	13	18	45
MS7-14	14	75	49
MS7-15	15	34	60

■ Type and size table for MS7 electric cabinet door lock

Shutter application

The BC1 Shutter is mainly used for power distribution cabinets of GZL, GCK and BFC.
The BC2 shutter assembly is mainly used for ventilation of heat dissipation in MLS, loading convenient, and can be used alone or in combination

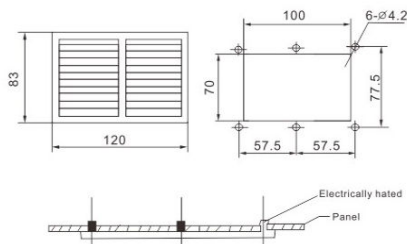


■ BC1-120X83 shutter

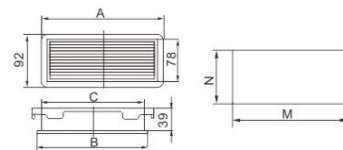


■ BC2 shutter

Configuraiton and installation dimensions for BC1-120*83



Type and installation dimensions of BC2 shutter assembly



■ Mounting hole dimensions diagram

Type	onfiguration				Mounting hole dimensions	
	A	B	C	M	N	
BC2-200×78	214	200	189.5	190	70	
BC2-458×78	476	458	450	450.5	70	

■ Configuration and Mounting hole dimensions diagram for the BC2 shutter assembly

Characteristics of observation window

Gc1 and GC2 type observation window can be used to observe instruments and device on GCK, GZL, PLG power distribution cabinets, with thickness of 1.5mm and 2mm. GC1 type observation is made of all transparent polycarbonate material which possesses advantages of easy installation, easy to press, high strength, and high transparency. GC2 type observation instruments is made of a combination of plastic and glass. The glass has high transparency and never fades.

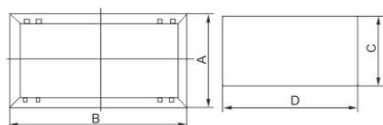


■ GC1 type observation window



■ GC2 type observation window

Type and installation dimensions of the GC1(2) observation window

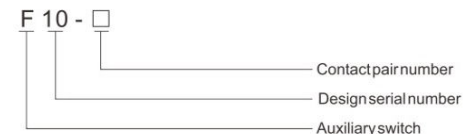


■ Configuration and mounting hole dimensions diagram for GC1(2) observation window

Type	onfiguration				Mounting hole dimensions	
	A	B	C	D		
GC1-100×100	116	116	100	100		
GC1-100×200	116	216	100	200		
GC2-100×100	116	116	100	100		
GC3-70×130	81	137	70	130		

■ Configuration and mounting hole dimensions table for the GC1(2) observation window

Type meaning



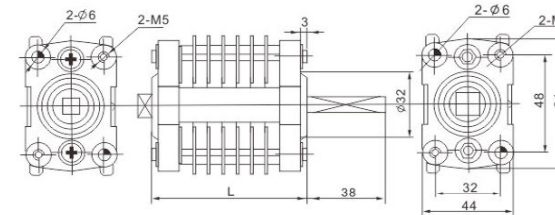
■ F10-□ Auxiliary switch

Introduction

When rotating square shaft for 90 degree, F10 series auxiliary switch can make moving contact rotating to achieve connecting or separating form static contact. Thus, it can turn on and off the electrical circuit, and is suitable for control loop in various switch devices and control equipments. It is now widely applicable in secondary circuit loop of VSI(ZN63), ZN123AF, ZN65, FZN25, CTD vacuum circuit breaker, load switch and spring operating mechanism. The product can also be used for transfer switch and combination switch.

[main technical parameters] rated voltage: AC380V rated current: 10A.

Configuration and installation dimensions for the F10-() auxiliary switch



■ Configuration and installation dimensions for the f-10 auxiliary switch

Type	Size	L
F10-4	2on2off	47
F10-6	3on3off	54
F10-8	4on4off	61
F10-10	5on5off	68
F10-12	6on6off	75
F10-14	7on7off	82
F10-16	8on8off	89

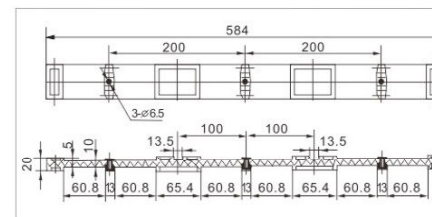


■ MLS middleware: GLB300.180P1

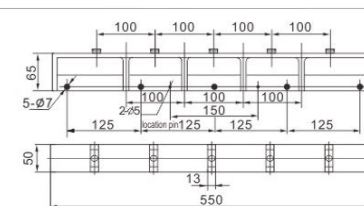


■ MLS bus frame: GLB300.003P2

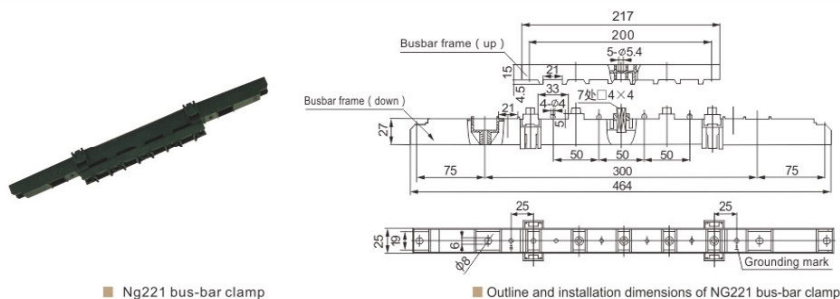
MLS middleware: configuration and installation dimensions for GLBS300.180P1



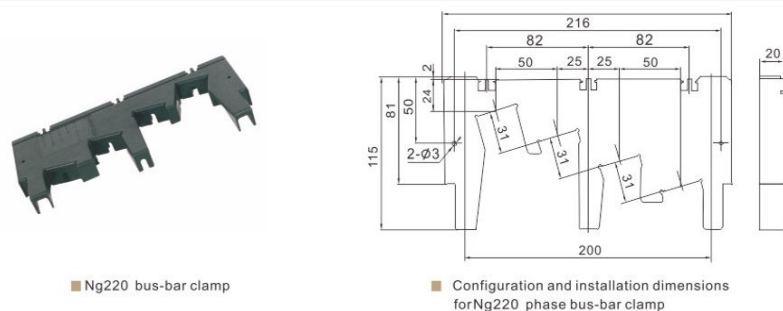
MLS Bus frame: configuration and installation dimensions for GLBS300.003P2



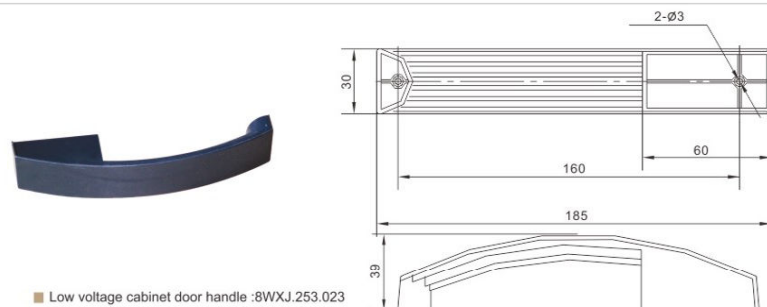
Configuration and installation dimensions for NG221 bus-bar clamp



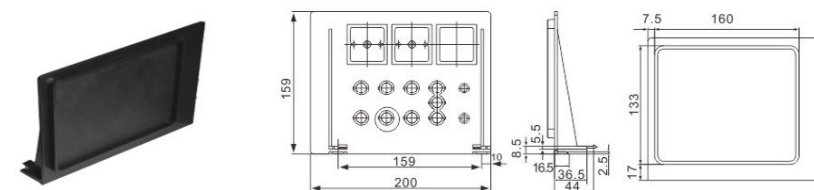
Configuration and installation dimensions for NG220phase bus-bar clamp



Low voltage cabinet door handle

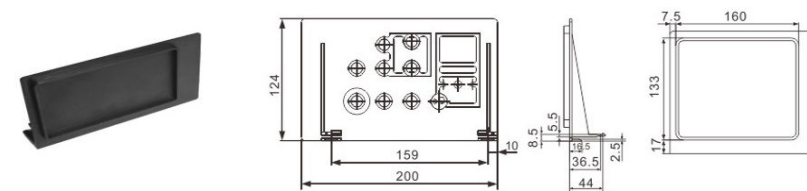


GCS Measurement-control board



■ GCS -TC-00104 Measurement-control board
(Drawer for more than one unit)

■ GCS-8XJ.150.087

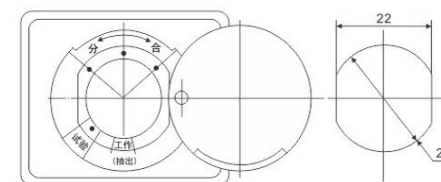


■ GCS -TC-00144 Measurement-control board
(Drawer for one unit)

■ GCS-8XJ.150.086

■ GCS Measurement-control board is specially designed for the drawer panel of GCS withdrawable switch devices and control equipments, and has two selections of one unit and more than one unit. GCS-TC-00044 measurement-control board is specially designed for one unit drawer of GCS, and GCS-TC-00104 measurement-control board is for more than on unit drawer of GCS.

Indication sign 8WXJ.860.042



■ Indication sign

■ Mounting hole dimensions

Working position instruction:

Plotting out position: both primary circuit and secondary circuit are disconnected.

Testing position: main switch is open, and control circuit is connected.

Operation position: main switch is closed, and the components are locked.

Note: The indication sign matches with HD-2 pushing mechanism.