

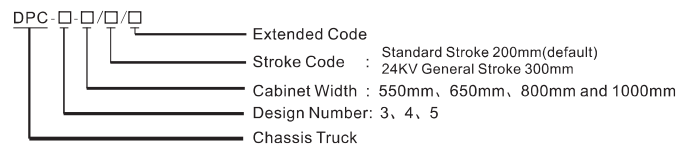
Normal Type Chassis Truck

Usage and function

Chassis truck has been used to mount circuit breaker, transformer and other components in the withdrawable switchgear to push them in and out as auxiliary operation of components and bus-bar. When chassis truck cooperate with inter operation of circuit breaker and interlock of middle-set switchgear, it can satisfy the interlock requirement of "5 preventions" stipulated in GB3906. The specific function as follows:

1. Only when the handcart is under testing/isolating or working position, the circuit breaker can make. After that, the handcart is under locked state, which avoids false connecting with negative charge.
2. When the handcart is under working position or away from testing/isolating position for 10mm, the earthing switch fails to make, avoiding powered false making of the switch.
3. When the earthing switch makes, the handcart shall not shift from testing/isolating to working position, avoiding the circuit breaker work on when earth switch on.
4. When the chassis enters cabinet, once away from testing/isolating position, the handcart fails to draw out from the cabinet.

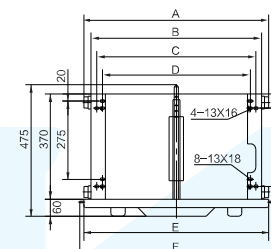
Type meaning



Configuration and installation dimensions for DPC-4- Chassis Truck

| Code | A | B | C | D | E | F |
|------------|------|------|-----|-------------------------------|------|------|
| DPC-4-650 | 500 | 450 | 410 | 385 Mounting hole 13X30 | 502 | 535 |
| DPC-4-800 | 650 | 600 | 560 | 520 | 652 | 685 |
| DPC-4-840 | 690 | 640 | 600 | 560 | 692 | 725 |
| DPC-4-900 | 750 | 700 | 660 | 620 | 752 | 785 |
| DPC-4-1000 | 850 | 800 | 760 | 720 | 852 | 885 |
| DPC-4-1200 | 1050 | 1000 | 960 | 960 | 1052 | 1085 |

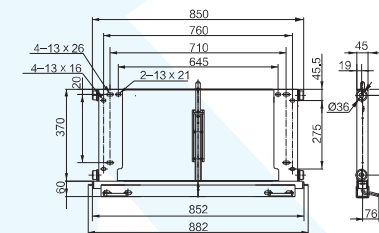
Note: There are 4 mounting holes in size 13x16 in DPC-4-800 Chassis Truck more than others.



Configuration and installation dimensions for DPC-4-1000/T Chassis Truck



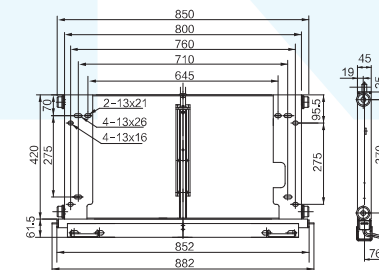
Configuration and installation dimensions for DPC-4-1000/T Chassis Truck



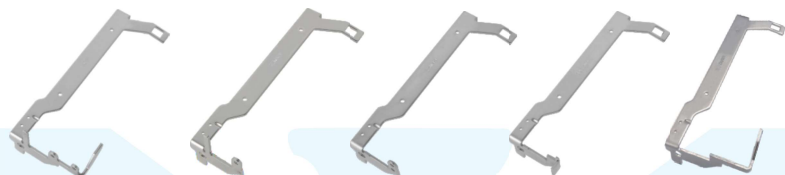
DPC-4-1000/24 Deepened 24KV Chassis Truck



- The deepened 24KV chassis truck has stroke of 300 with frame deepened by 50, and includes a guiding device.
- 24KV chassis truck not only has benefit to improve the properties of chassis truck, but also able to stabilize the core of circuit Breaker.

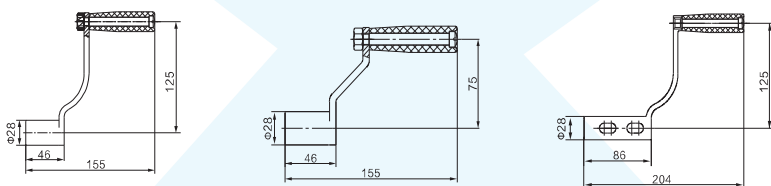


Lock plate for Chassis Truck



8XS.141.012 8XS.141.012.1 8XS.141.012.2 8XJ.141.050.2 8XS.141.012S(VS1+)

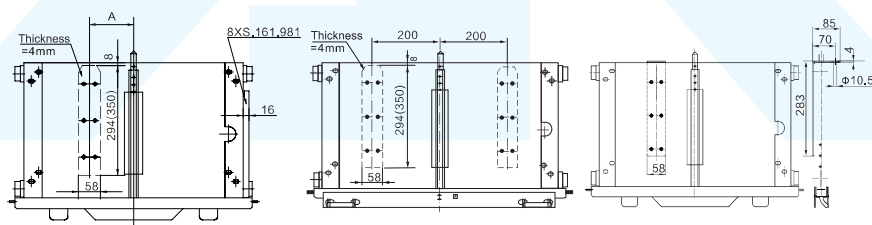
The handle



Normal handle: 5XS.253.013 Handle for lower-layer chassis truck: 5XS.253.013.4 Elongated handle: 5XS.253.013.6/WK

If you need lower-side all-direction handle, please note

Chassis truck earthing methods

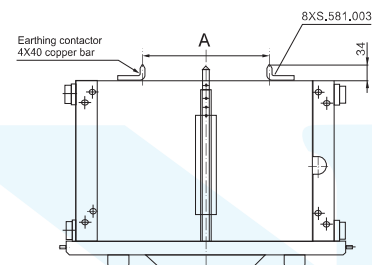


| Code | A |
|-----------|-----|
| DPC-□-650 | 100 |
| DPC-□-800 | 160 |

Note: The numbers in brackets are the dimensions of 24KV DPC-□-1000 Chassis Truck

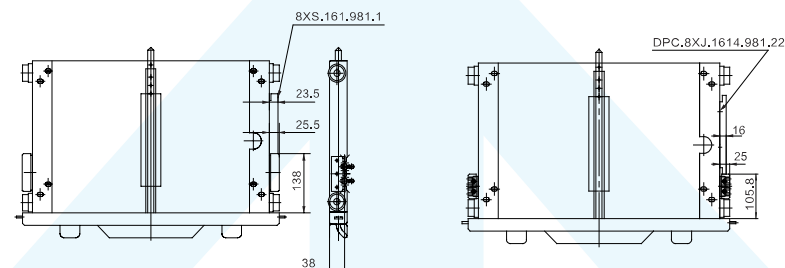
- 7 shape Earthing bar
- Earthing bar DPC.8XJ.588.001.51/CZZ
- Please give clear indication for the earthing bar when ordering.

Earthing contactor



| Code | A |
|------------|-----|
| DPC-□-650 | 180 |
| DPC-□-800 | 296 |
| DPC-□-1000 | 496 |

Earthing Clamp



Earthing clamp installation diagram

Note: In a interlock system, the value of guide rail would fluctuate according to earthing clamp matched with copper guide rail or aluminum guide rail.

Smaller earthing clamp



JX(VEP Earthing clamp)
DPC.5XJ.577.005



J(VD4 Earthing clamp)
5WXJ.577.001

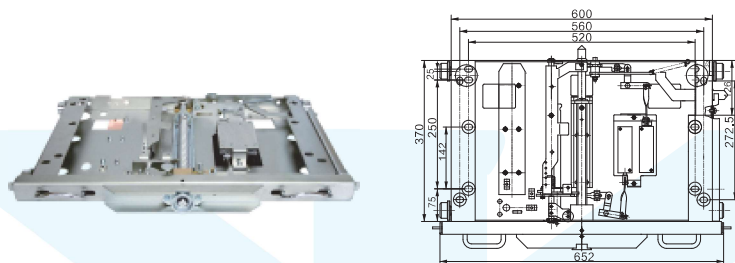


JD(Short time withstand current grounding clamp)
DPC.5XJ.577.001.10/JD

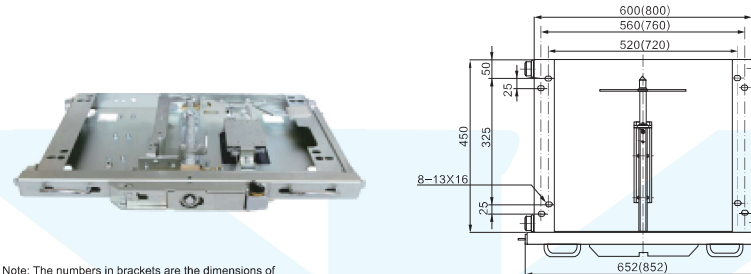


J/24(VD4 Earthing clamp 24kV)
DPC.5XJ.577.001.3

DPC-4-800/VD4

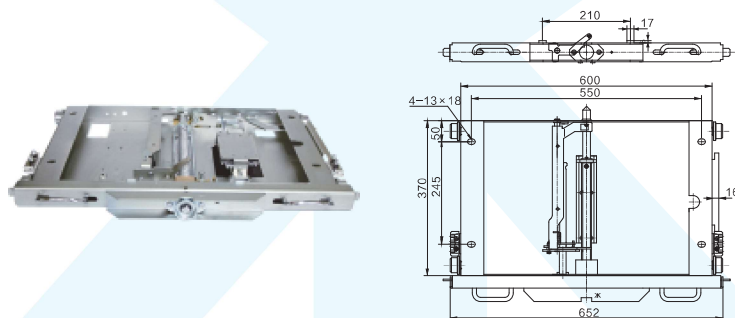


DPC-4-⁸⁰⁰/₁₀₀₀ /YDF Deepened

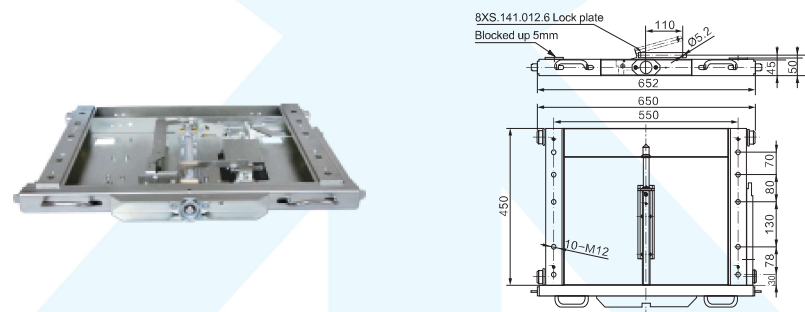


■ Note: The numbers in brackets are the dimensions of 1000 mm Width Chassis Truck.

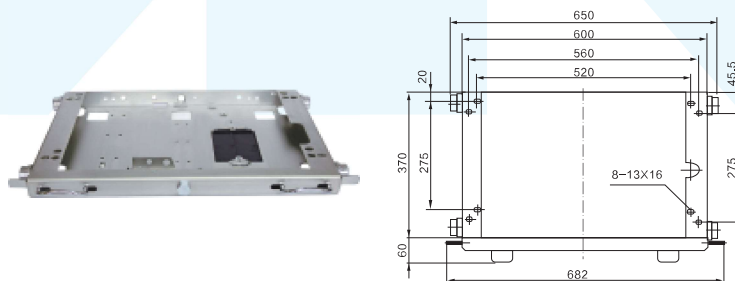
DPC-4-800/VEP



DPC-4-800/YH3 Deepened

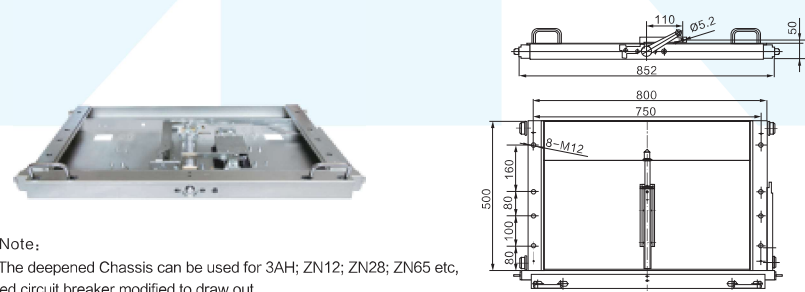


DPC-4-800/XC2(used for lower-layer)



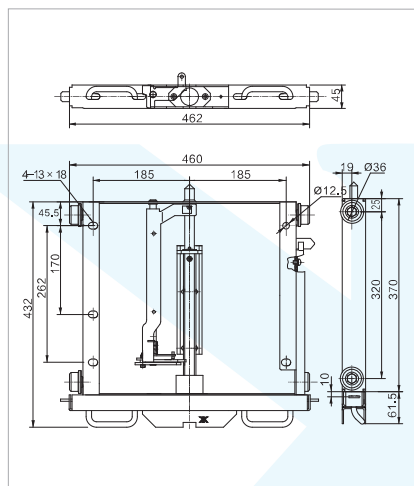
■ Configuration and installation dimensions for DPC-4-800/XC2 Chassis Truck

DPC-4-1000/YH3

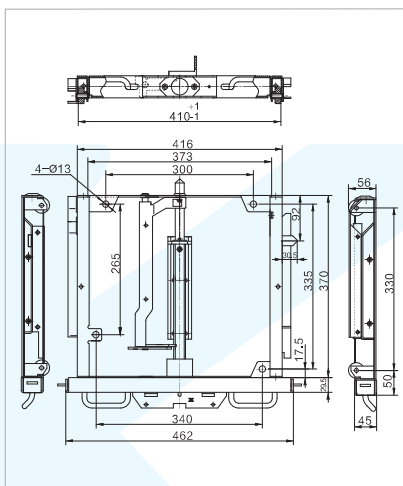


■ Note:
1.The deepened Chassis can be used for 3AH; ZN12; ZN28; ZN65 etc, fixed circuit breaker modified to draw out.
2.DPC -4- MYH3 with 8XS, 141.012.6 lock plate, Please note when ordering if you need other lock plate.

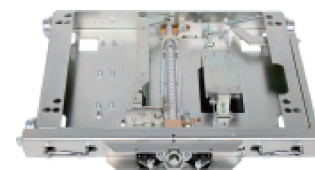
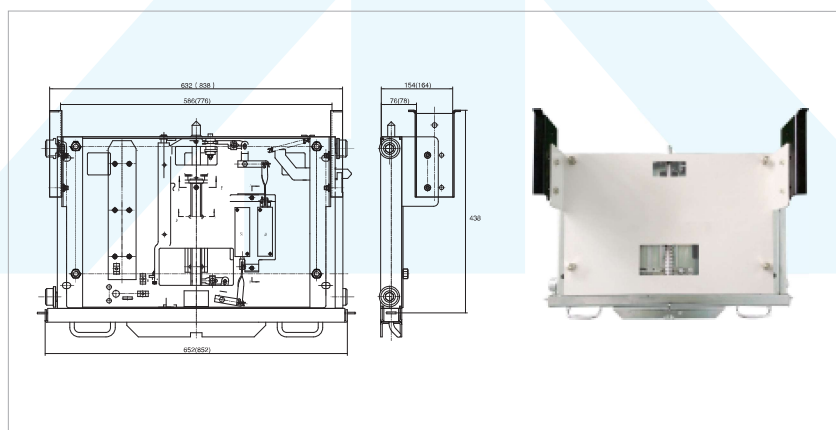
Centrally Installed chassis truck



DPC-max-550(V-maxChassis truck)



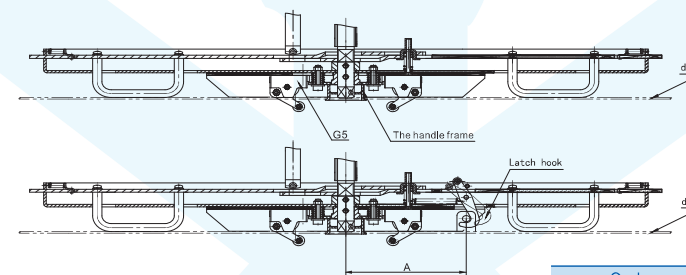
DPC-4-⁸⁰⁰/₁₀₀₀/JY Inspection truck



DPC-4-800/S5 Chassis truck (Modular patented product)



Moto of interlocking S5



| Code | A |
|--------------------|-----|
| DPC-□-650/S5 | 101 |
| DPC-□-800(1000)/S5 | 130 |

The interlocking function of the cabinet of chassis truck

a. DPC-0-0/G5 Chassis truck

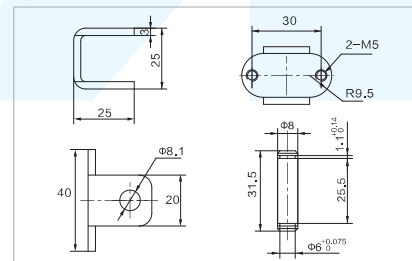
This type is only added the function of closing the door. It means that when the door is open, it not allow to move chassis truck without handle insert. only if the door is closed, it is able to use. It don't need the change of the door of the cabinet to fit this function.

b. DPC-0-0/S5 Chassis truck

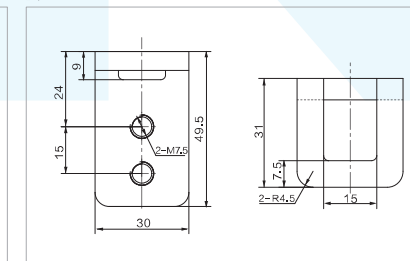
It add the function of door-locking in the base of a, which means that when the hand shaft is out of the testing position, the door will be locked, and it can't be open, only if it is in the position of the testing, the door can be opened. The door of the cabinet need changing to fit the function.

Note: the structure of interlocking is similar to the /S, no big difference in the outlook, and adopt the structure of mold which is easy to change and install.

A :



B :

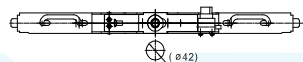


Special chassis truck: DPC-□-□/2J1 Chassis Truck with interlock device

Configuration and installation dimensions diagram

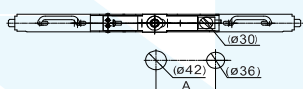
Method one: Vertical installation

Users don't need to open a hole on the cabinet, but need to make the door open.



Method two: horizontal installation

Users need to make the door open, but don't need to open a hole on the cabinet.



Introduction:

This interlock device is used to prevent two chassis trucks being on the operating location at same time. The main function of interlocking: two chassis trucks are controlled by only one key, if one of the chassis trucks is being on the operating location, the key can't be taken out, and another chassis truck has no key to unlock, the handle can't be put in and the chassis truck can't shake, so it can achieve the purpose of avoid them to be on operating location.

Order Notice:

1. If you need this interlock device, please add /2J1 (or 3J2) following the normal type. A set of this type chassis truck contains two chassis truck and one key.
2. When ordering, please give clear indication that whether installed vertically or horizontally.

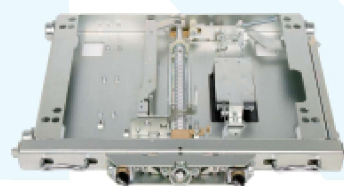
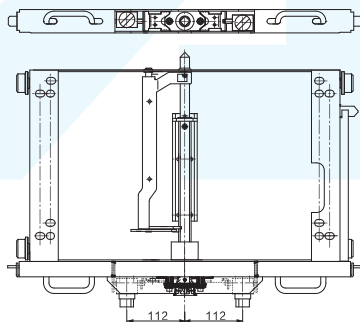
Two Chassis Trucks with interlock function



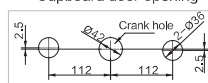
The unlocking position

| Code | A |
|-----------------------|-----|
| DPC-□-□-650/2J1 | 91 |
| DPC-□-□-800(1000)/2J1 | 121 |

DPC-4-800/SHS/1J1 With double program interlock chassis truck

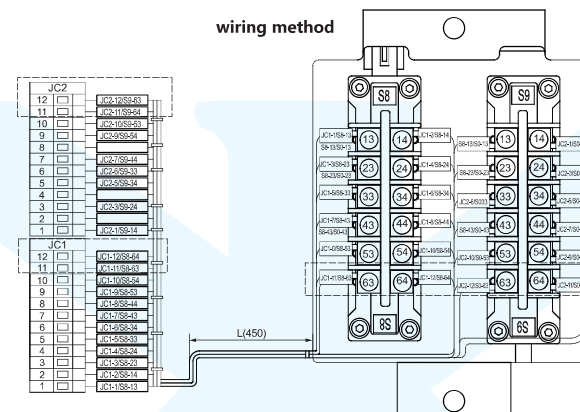


Cupboard door opening



Chassis truck wiring diagram

wiring method



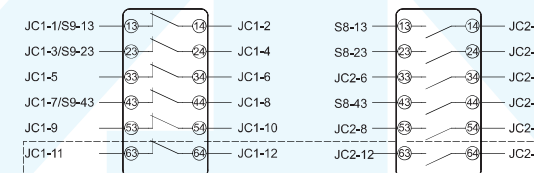
SCB



Test position assistant switch



Working position assistant switch



Chassis wiring overview:

1. Chassis in the test position, the S8/S9 can be based on customer requirements;
2. Wiring terminal according to the choice of customer or provided by the customer;
3. The wiring mark can be adjusted by the customer;
4. The figure shows our standard wiring. Customers can communicate with us if they have other requirements.

| Regular assistant switch S8/S9 | JC1/JC2 | Cable marker | Length(mm) standard length 450 |
|--------------------------------|---|-------------------------------|--------------------------------|
| 5050 | 20P(1-10) Dotted position no connection | According to customer require | More than 200, as require, |
| 6060 | 24P(1-12) Dotted position connect | According to customer require | More than 200, as require, |

| Terminal strip chose JC (socket and plug) | Terminal strip chose JX | Assistant switch S8/S9 | Terminal strip select JC or JZ |
|---|-------------------------|------------------------|---------------------------------------|
| YC101-5,08-10P (Often gauge) | 3DZ,01,00,010(20P) | 5050 or 6060 | Wiring according to customer require, |
| YC101-5,08-12P (Often gauge) | 3DZ,01,00,010(24P) | 6060 | |

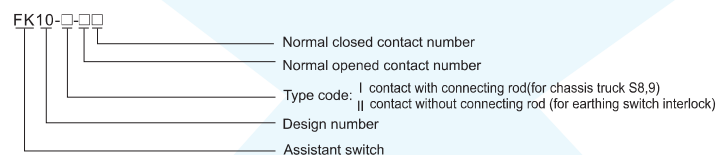


FK10-I-60
Assistant switch

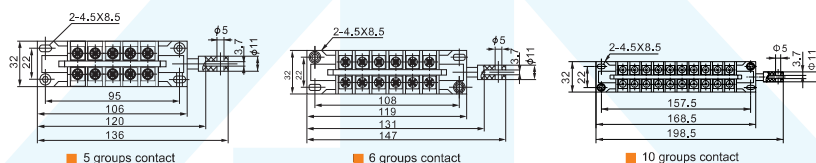
FK10-II-60
Assistant switch

FK10C-I-60
Assistant switch

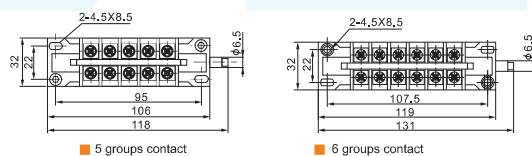
Type meaning



FK10-I-□□



FK10-II-□□

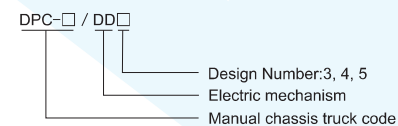


Electric Chassis truck

Introduction of electric chassis truck

Electric chassis truck has been added a function that it can be operated with electric based on manual chassis truck. It has the same size with manual chassis truck. In order to achieve intelligent, programmatic and remote control, it is a necessary component. Over the years Electric Chassis Truck has developed to the third-generation mixed type from the first-generation. It can match with micro permanent-magnet DC machine since the third-general. Furthermore, making full use of space, electric chassis will not change the size and the function after matched with micro permanent-magnet DC machine. If you want to purchase electric chassis truck, please add /DD3 or DD4 after type code when ordering.

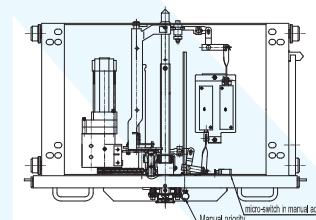
Type meaning



Electric Chassis Truck (Manual First) S

Presentation:

Description: Based on the original electrical chassis truck, this kind of chassis truck has an additional function of Manual First. With the micro switch connecting the operation hole of the handle. When the handle in it, the motor can not control the chassis truck. If you need this function. Just add DPC-/DD4S based on the chassis truck DPC-/Dd4



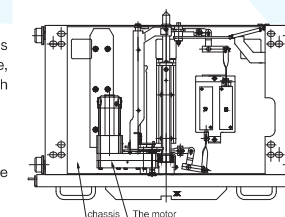
Electric Chassis truck (Gear version/Patented product)DPC-□-□/DD5

Presentation:

This chassis is a new type, with gear structure and motor design. The chassis has a simple appearance; artistic; Reduce the transmission box structure, electric part space is smaller; More conducive to quality control, integrated with the motor single component control.

Structural advantages:

1. Electric and manual conversion clutch release is easier;
2. Chassis dimensions are the same as manual chassis, no need to change the frame



Chassis truck