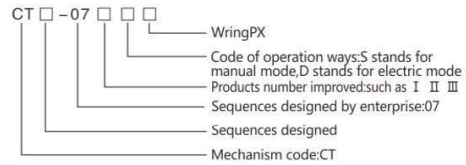


Model composition and meaning



Description

CT□-07D(S) (D stands electric mode, S stands for manual mode) spring operating mechanism meets the technical requirements of GB1984-2003 high voltage alternation breaker. It can be adaptive to ZN-12T/T630-20 series products. This mechanism has reclosing function and small volume (or dimension). Rated voltage: DC220V, 110V, 45V, 24V. The output angle is about 87°. Mechanism endurance: 10000 times.

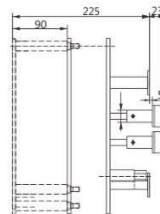
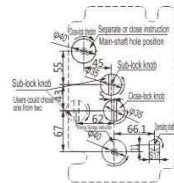
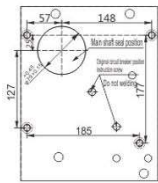
Electric spring mechanism :CT□-07

■ Electric spring mechanism :CT□-07(FZ)PX

■ Electric spring mechanism: CT□-07 boundary dimensions diagram



Note: FZ means auxiliary block in the left.

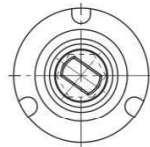
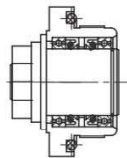


■ Electric spring mechanism :CT□-07(FZ)PX auxiliary equipments



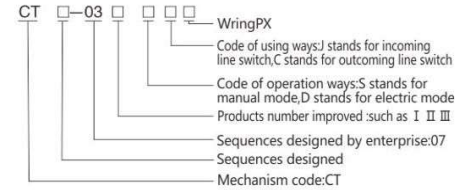
Seal bush assembling: CT□-07 body auxiliary equipments

■ Seal bush assembling: 5XJ.210.169



■ Note: applicable for CT-07 mechanism and body transmission

Model composition and meaning



Description

The CT type spring operating mechanism assembled for XGN-12D is assembling equipment with medal closed switch whose rated voltage is 12kv. This series mechanism adopts the spiral spring to control the operation of loading switch. The operational grounding is controlled by pressing spring half. The working states conclude three stations of closing, tripping, grounding. The mechanical latch is assembled between closing and grounding to avoid fault operations.

CT□-03□J spring operating mechanism

■ XGN□-12(F) manual mechanism
Type: CT□-03SC



■ XGN□-12(F) electric mechanism
Type: CT□-03DC PX



CT□-03SC/DC mechanism operating instructions

Mechanism energy holding :

Put the mechanism assembled in the body, use the specified operating handle, plug in the top part of mechanism (closing operating shaft), clockwise rotation for about 120°, complete the movement of mechanism spring energy holding, or electric energy storage by electric operating motor.

Closing operation

Enter the closing button or electrify electric operating closing coil (one energy holding spring), the spring energy is released, lead the body to closing, the primary circuit on.

Opening or (fuse) tripping operation:

Enter opening button (or simulation fuse tripping) or electrify the electric operating tripping coil, another spring energy is released, lead the body to opening, the primary circuit break.

Grounding closing operation:

Operating handle plug in the bottom of the mechanism (grounding operating shaft), clockwise rotation for about 90°, body is grounded by mechanism spring force, primary circuit closing.

Grounding tripping operation:

Plugging operating handle in the bottom of mechanism (grounding operating shaft), anticlockwise rotation for about 90°, body is grounded by mechanism spring force, the circuit tripping.

There are mechanical latch between closing tripping and grounding operating. During the tripping (insulation) state, it can operate the closing or grounding. Once one succeeds, the other will be prevented.