

### CT□-03□J spring operating mechanism

■ XGN□-12(C) manual mechanism  
Type: CT□-03SJ



■ XGN□-12(C) electric mechanism  
Type: CT□-03DJ PX



### CT□-03SJ/DJ instructions and operating specifications

Fixing the mechanism on the body, using the specialized operating handle, plugging the top of the mechanism (closing operating shaft), clockwise rotation for about 90°, the body and the circuit is closed by the spring force, Or entering the closing button for electric operating, electrifying the motor, all these complete the switch closing operation.

Tripping operation:

Plugging operation handle in the top of the mechanism (closing operation shaft), anticlockwise rotation for about 90°, primary circuit is tripped by mechanism spring force, or enter the tripping button, the motor electrified lead the mechanism complete the tripping operation.

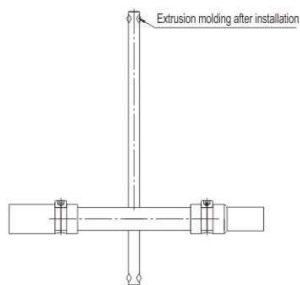
Grounding closing operation:

Plug the operation handle in the bottom of the mechanism (grounding operation shaft), clockwise rotation for about 90°, the grounding circuit is closed by the mechanism spring force.

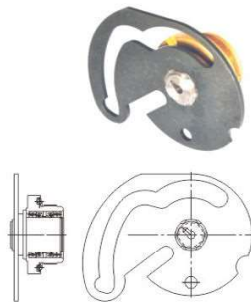
Grounding tripping operation:

Plugging the operation handle in the bottom of the mechanism (grounding operation shaft), anticlockwise rotation for about 90°, the grounding circuit is tripped by the mechanism spring force.

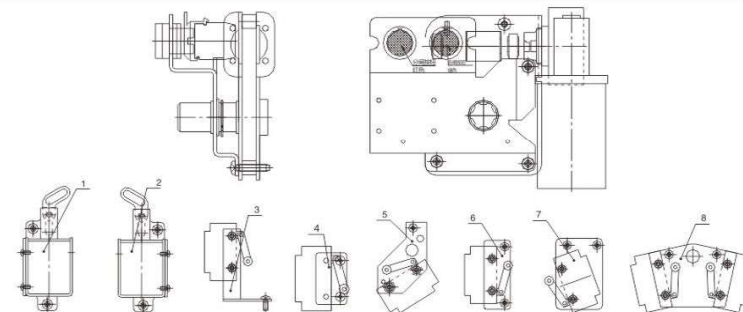
■ Operating handle boundary dimensions  
Diagram code: XGN.5XJ.253.030



■ Toggling pate assembling  
Diagram code: XGN.5XJ.151.161







### CT□-03□C electric parts of operating mechanism



■ The program about CT□-03□C electric parts of operating mechanism

No.	name	symbol	amounts	remarks
1	Opening coil assembling	XGN. 6XJ.610.002	1	
2	Closing coil assembling	XGN. 6XJ.610.001	1	
3	Mounting panel(fuse contact) assembling	XGN. 5XJ.062.010	1	For cabinet
4	Mounting panel (manual, electric toggling switch)	XGN. 5XJ.062.013	1	
5	Mounting panel (energy storage indication) assembling	XGN. 5XJ.062.008	1	
6	Mounting panel (energy storage switch) assembling	XGN. 5XJ.062.011	1	
7	Mounting panel (cable vault door) assembling	XGN. 5XJ.062.009	1	For cabinet
8	Mounting panel (position switch) assembling	XGN. 5XJ.062.012	1	

### CT□-03 operation mechanism&Other accessories

No.	symbols	names	remarks
	XGN.5XJ.271.005	Limit block assembling	A latch that makes mechanism not close when the lower door is not equipped
	XGN.5XJ.261.013	Door slider assembling	A latch that makes lower door complete opening operation when mechanism is in grounding state
	XGN.5XJ.885.001	Door holder components	A panel in the front of mechanism that open the mechanism when CT□-03□C mechanism is in grounding state
	XGN.5XJ.271.004	Limit block assembling	A connection between mechanism and cabinet, equipping mechanism on the cabinet.