

# Trend Book

*Capsule* Limited

SS24

## ABOUT CAPSULE

With own production facilities in He Yuan City, China, Capsule (previously Bowker Garment Accessories) has been engaging in quality garment accessories manufacturing business for over 20 years.

Our products cover a wide variety of narrow-textiles and packaging goods. Having a reputation for high quality standards, Capsule works close with world famous brands.

We treasure every chance to serve our valuable customers with the finest accessories made by exceptional craftsmanship. Capsule carries out production that reduces costs and waste, and is eco-friendly. We will continuously work to improve our environmental preservation activities as we believe acting as a responsible business will contribute to lasting success.



### Our Philosophy

At Capsule, we believe that accessories matter. The goal of embracing details is to get you to achieve the best possible design. We are here to support your brands and products with these small details of awareness and craftsmanship.

### Our Mission

We continue to innovate, to work on manufacturing high-quality and eco-friendly products, and we strive to get recognized by the global fashion industry.



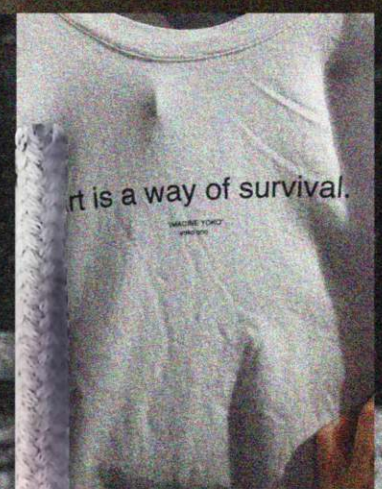
# Grunge is back

Fashion is starting to look purposely undone and rough around the edges, the grunge trend is back in a big way for spring 2024! There is a notable increase in the demand for a moody, less polished aesthetic with durable clothes and dress-downed looks, Love grunge, it's so nostalgic.

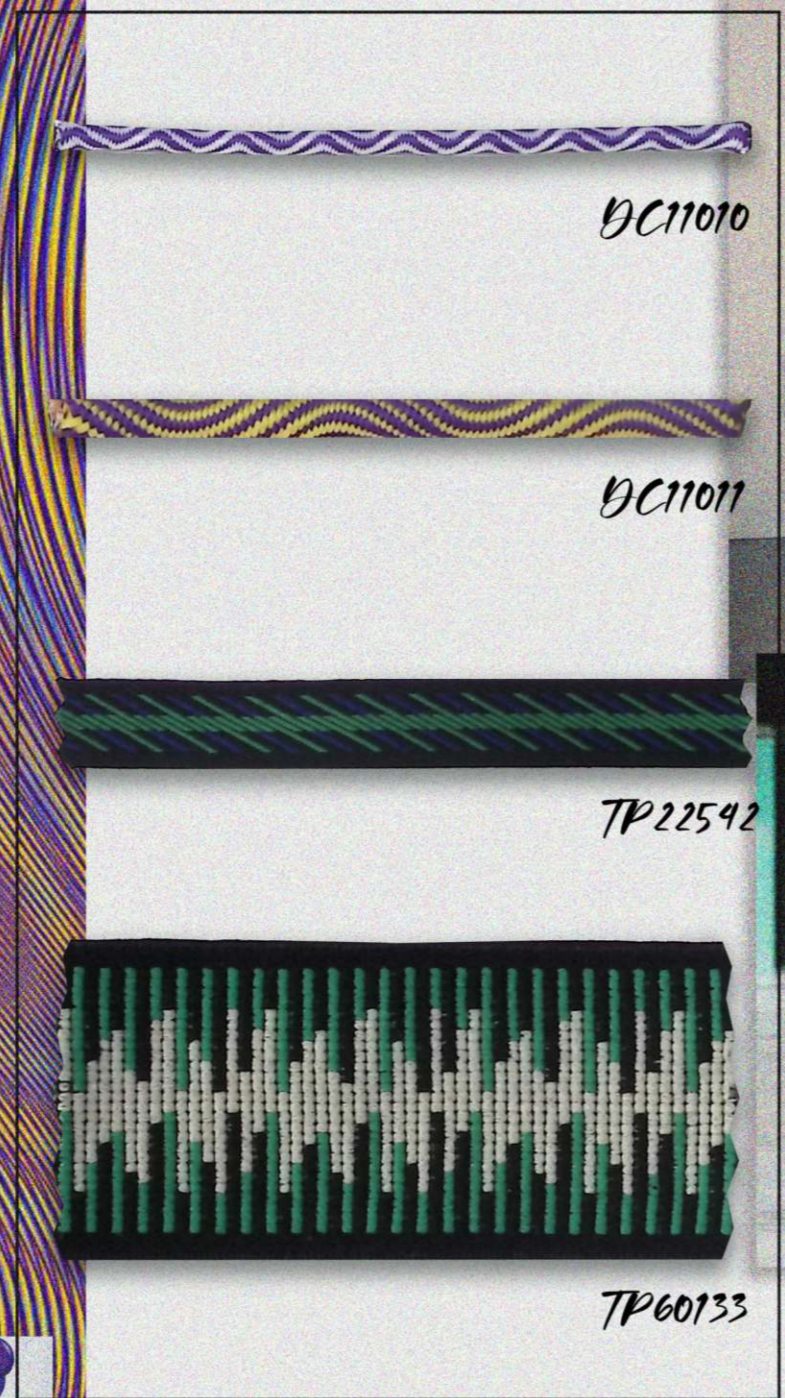
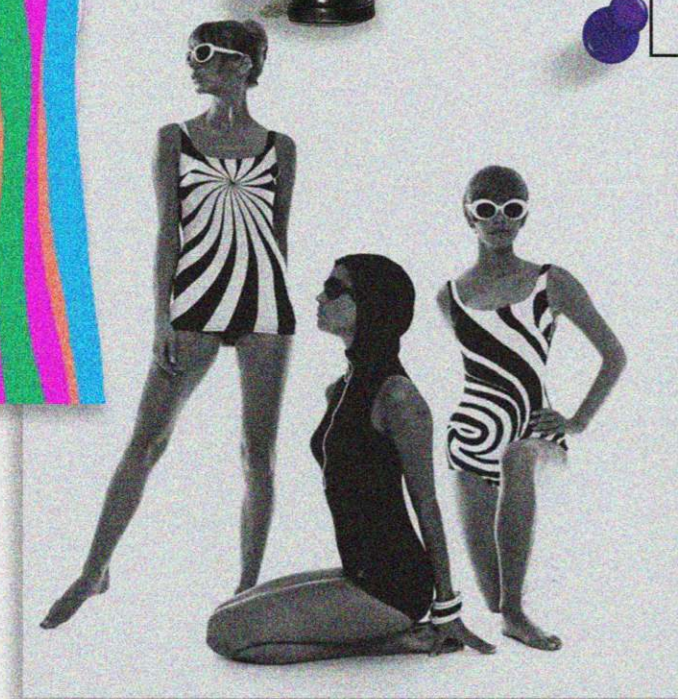
capsule art concept



nyctophilia  
(n.) love of darkness or night. finding relaxation or comfort in the darkness





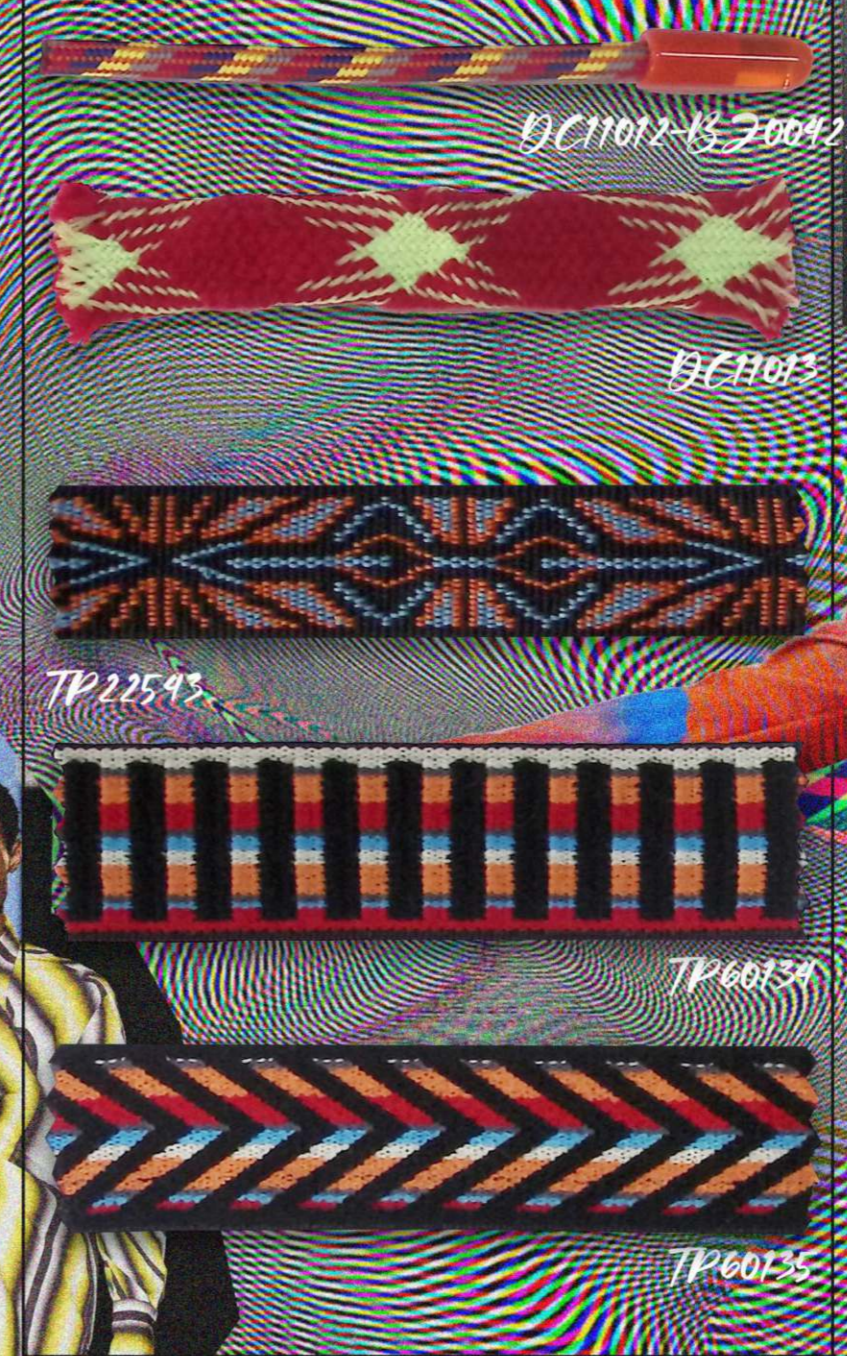
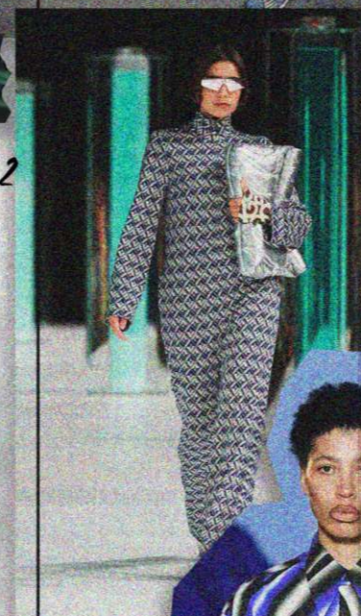


DC11010

DC11011

TP22542

TP60133



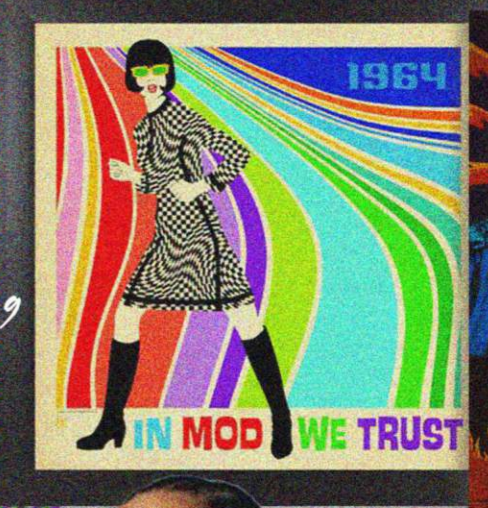
DC11012-13-200429

DC11013

TP22543

TP60134

TP60135



# Psychedelic

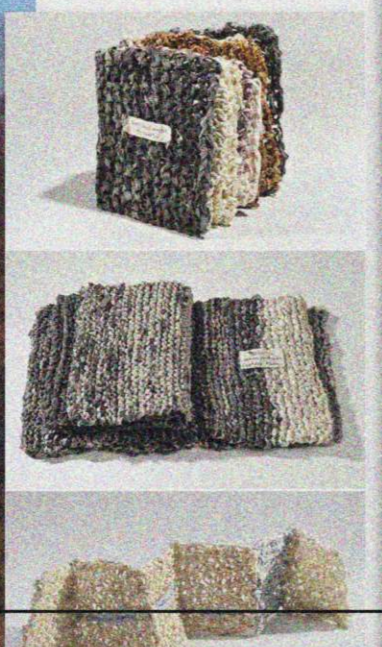
Psychedelic Fashion was mainly the quintessential movement of the 1960s. The details that distinguish the psychedelic fantasy are mainly fantastic subjects, kaleidoscopic spirals, acid colors in contrast and peculiar details. In contrast to the original psychedelic craze of the sixties, which was associated with drugs and anti-establishment sentiment, the focus of the current psychedelic revival is on the pure enjoyment of fun, dreamy designs.

Global Recycled Standard

OEKO TEX  
STANDARD 100  
HKB 028997 TESTEX

trendbook SS24 02  
Capsule Limited © 2023



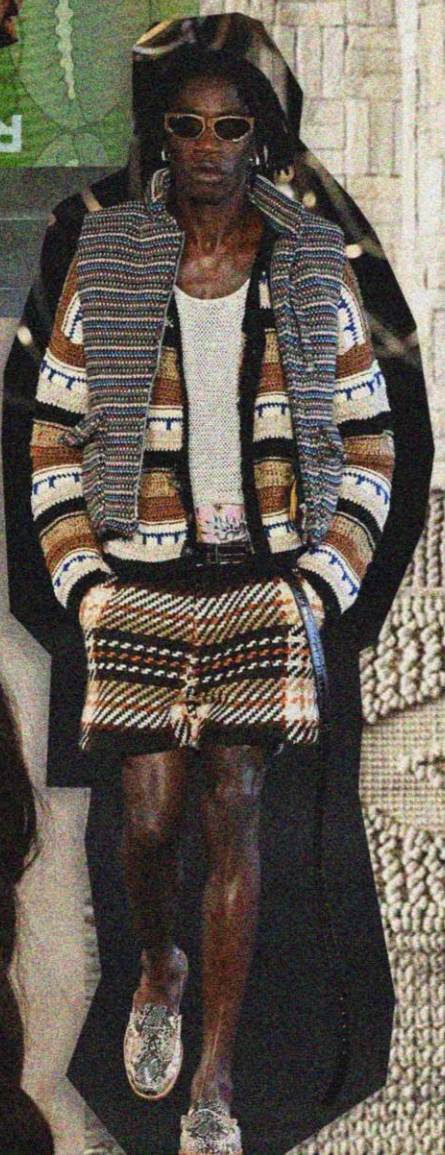
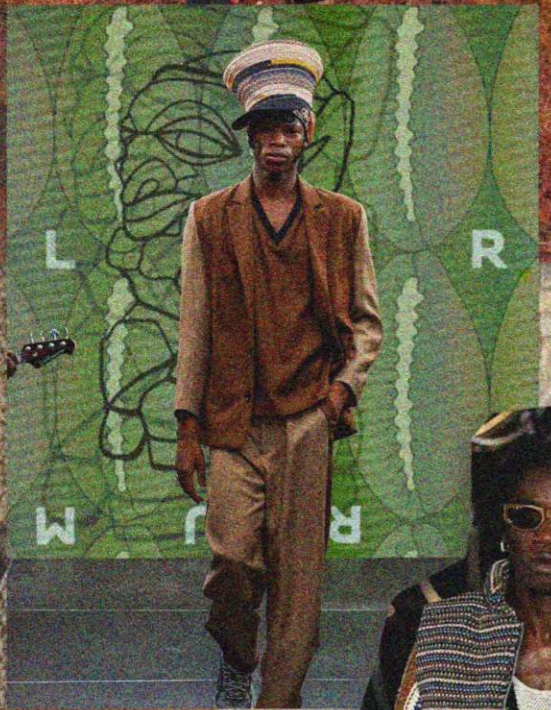


#Capsule #trims#concept

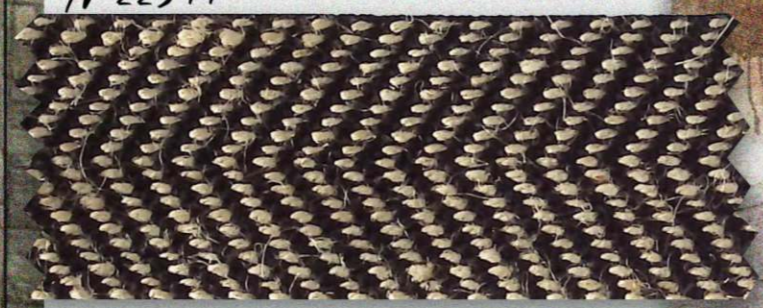
# Earthy

Earth is a solid foundation on which life can be supported. It is strong, comforting, reliable, and firm. Rocks, gravel, soil, and sand make up earth's texture. These elements remind us to live a more organic way of life.

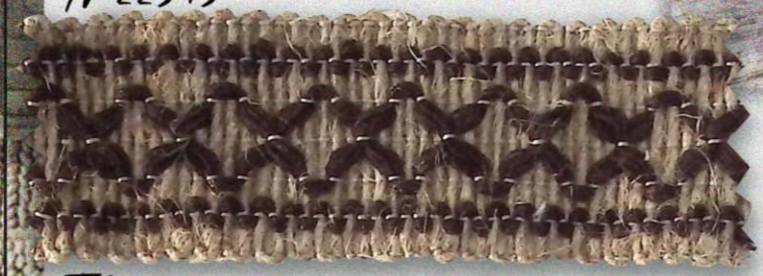
Let us assimilate into the nature and be a part of it.



TP22544



TP22545



TP22546



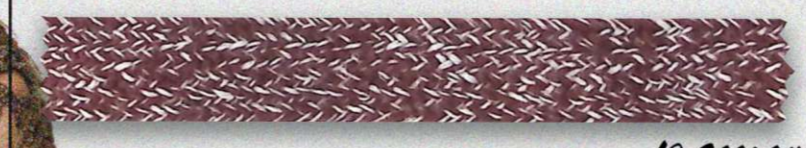
TP22547



TP22548



TP22549



DC11014



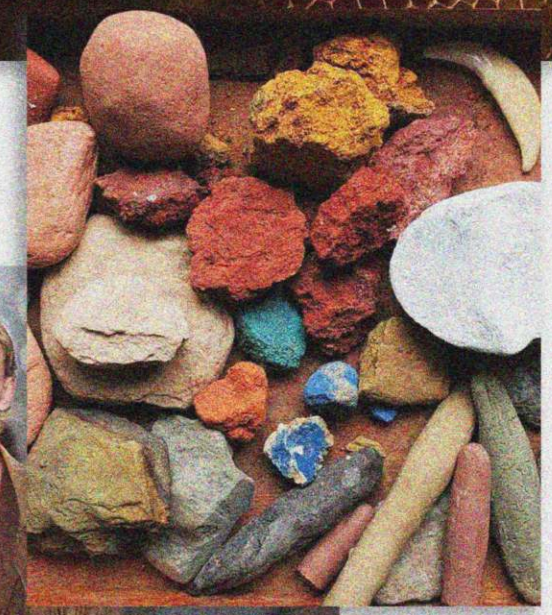
DC11014



DC11015



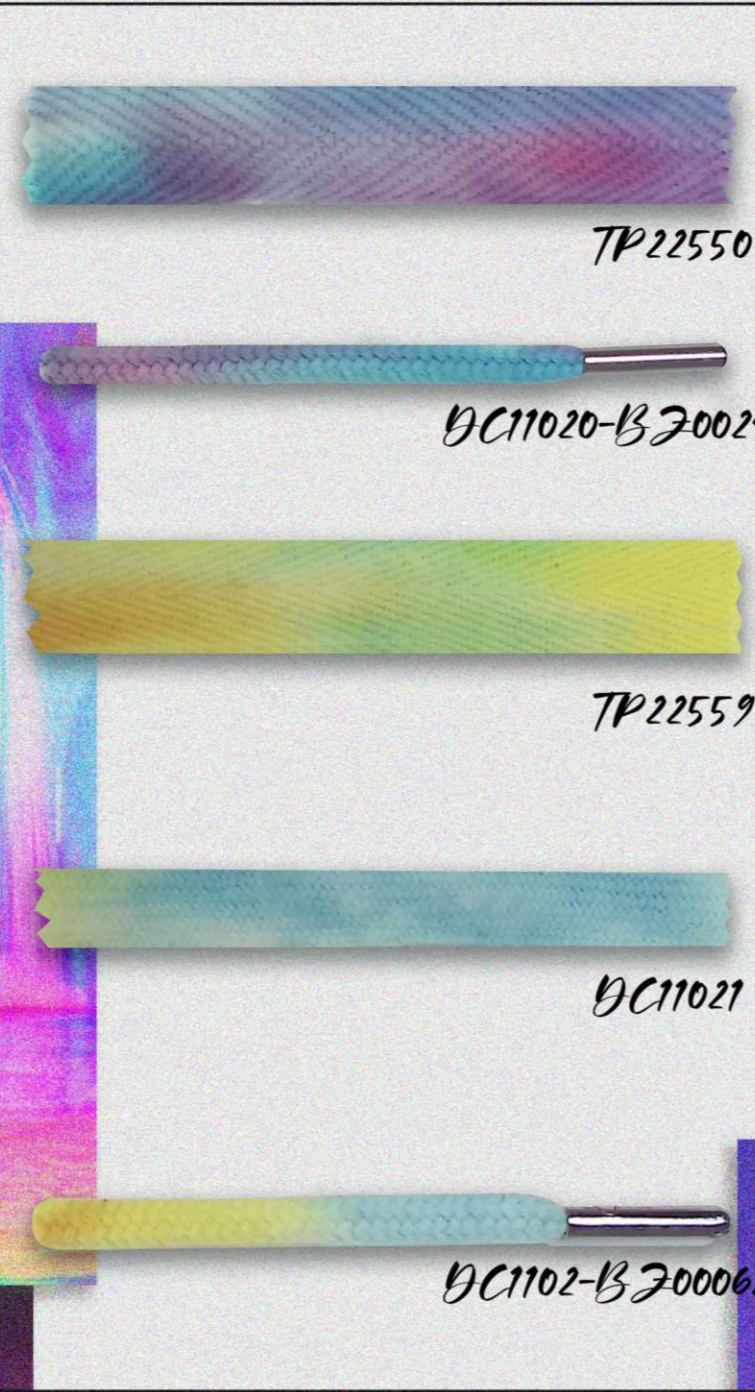
DC11015



trendbook SS24 03  
Capsule Limited © 2023







In dreamy playground, all designs are extremely delicate and light in a way that seems not to be of this world. The idea, it seems, is to let the imaginary take flight, and fantasy soar...

Where is it? There are no longer lines between the real and the virtual...

# Dreamy Playground



TP30511

TP30512

TP50801



SP00402



trendbook SS24 04  
Capsule Limited © 2023







TP22553

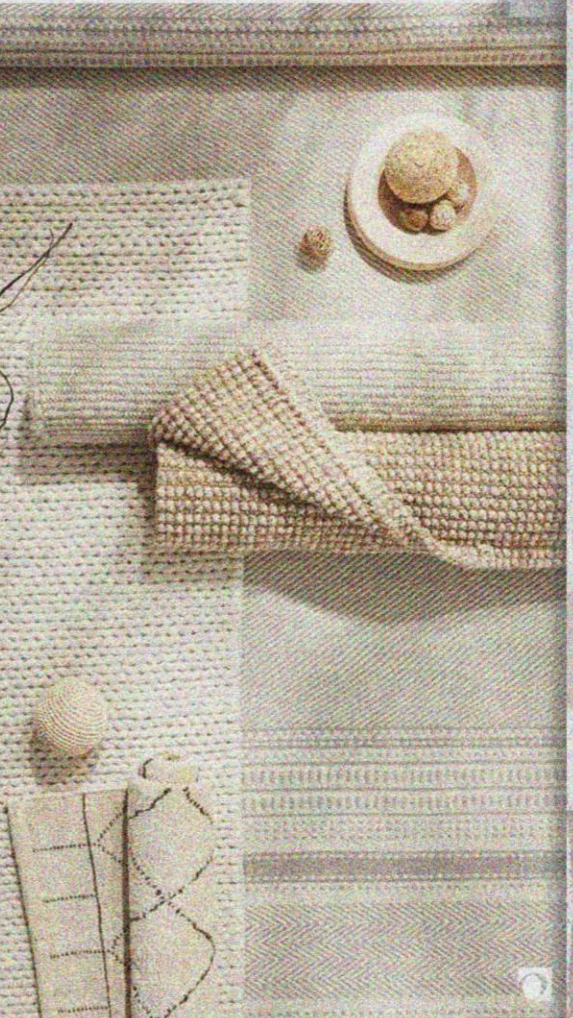
TP22554

TP60139



# Poetic

Something that is poetic is very beautiful and expresses emotions in a sensitive or moving way. The adjective "poetic" is back to fashion, applied to anything with any kind of sensitivity or technical mastery to it.



THE BOUNDARY BECOMES BLURRED  
(M.O.R.A)

EXTERIOR : 100% NYLON  
LINING : 100% POLYESTER  
FILLER : 100% POLYESTER

WASHING INSTRUCTIONS

- A. DO NOT WASH BY HAND AND IRON PRINTING PATTERN.
- B. WASH WITH SIMILAR COLOURS WASH INSIDE OUT.
- C. MIT GLEICHEN FARBEN WASCHEN VON LINKS WACHEN.
- B. LINE DRY IN THE SHADE.

CB00196

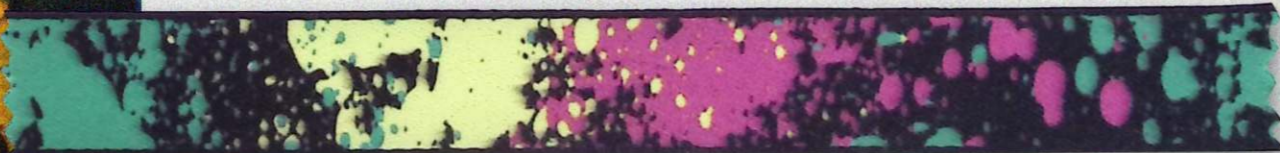
TP22551

TP22552



trendbook \$524 05  
Capsule Limited © 2023





TP22555



TP22556

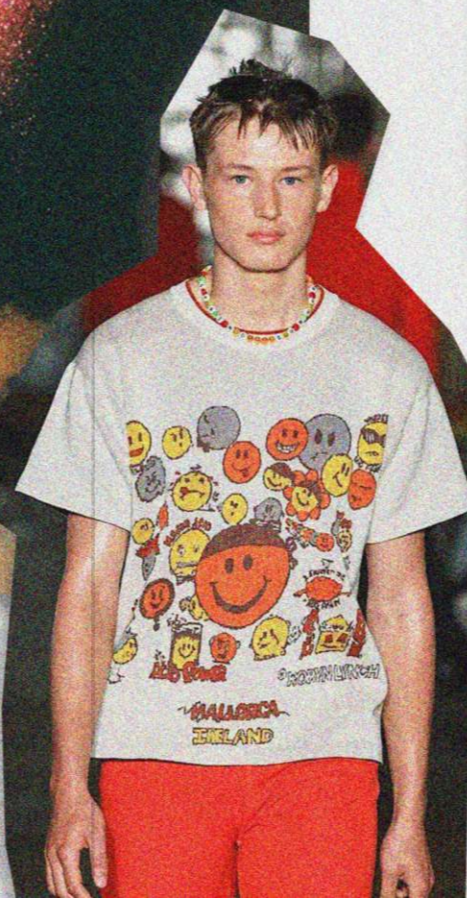


TP22557

# Sanguine

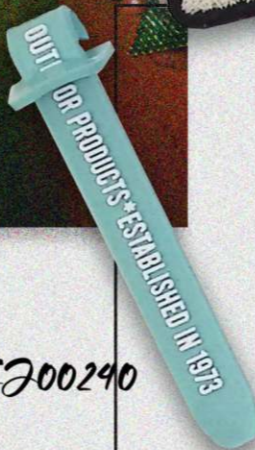
The bright colours and crazy prints that define sanguine emotions are bursting with contagious joy and optimism, and allowing yourself to feel optimistic and hopeful about the future is vital when it comes to pushing for change.

It's time to slip some on.



EP00218

EP00240



EP00241



EP00242



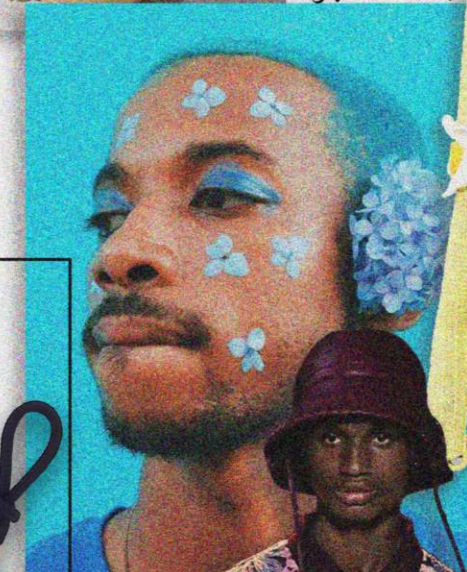
TP60140



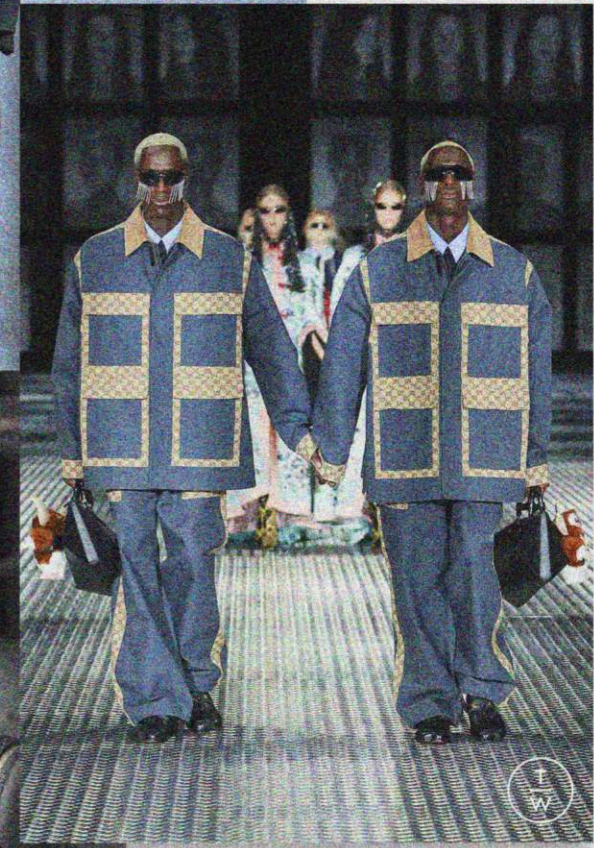
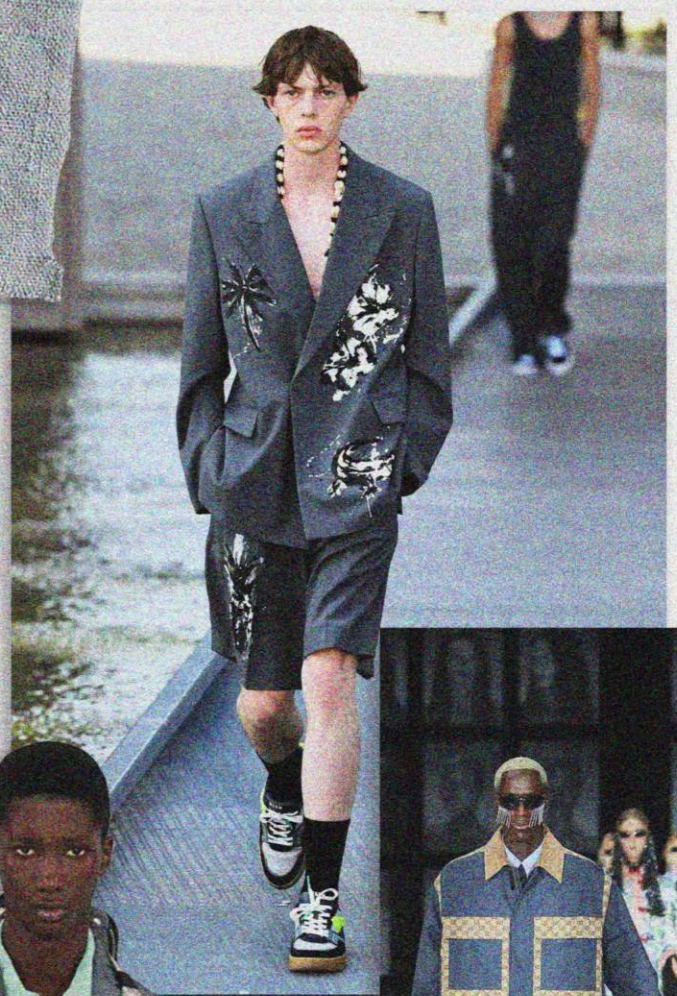
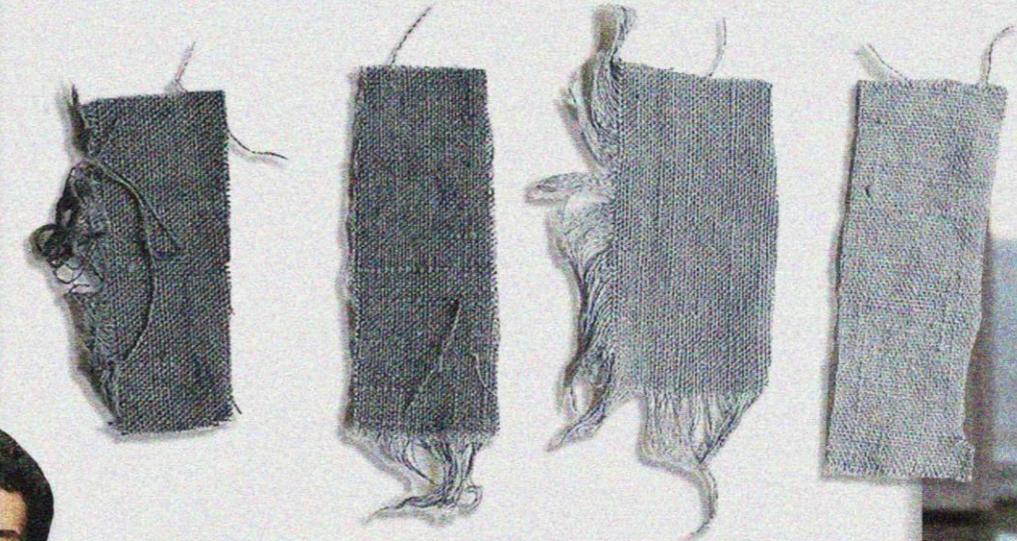
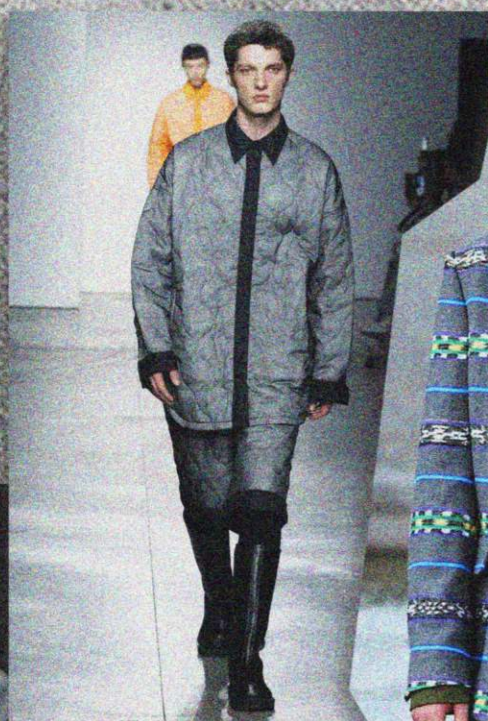
TP60141



EP00401







# Grey

Several design houses collectively embraced the rigid and exacting codes of tailoring and precise uniform dressing. It's worth highlighting the sense of belonging that grey colours and uniforms foster, serving as a cipher for sartorial egalitarianism.







Sequins, crystals, lamé, gloss, satin and metallics — silver in particular — are having a commanding presence in fashion now. Yes after spending years locked away and out of sight, we all deserve to catch some light.

# Glimmer Shimmer



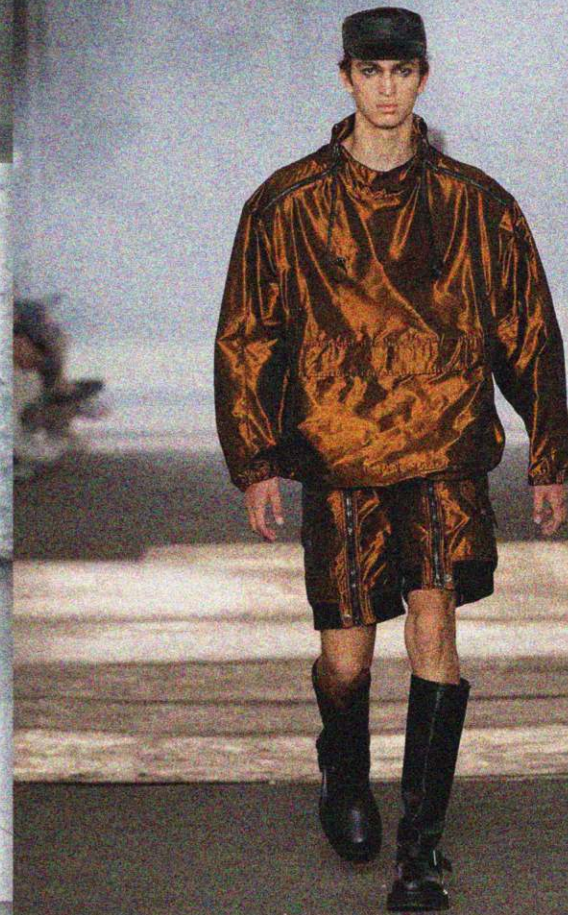
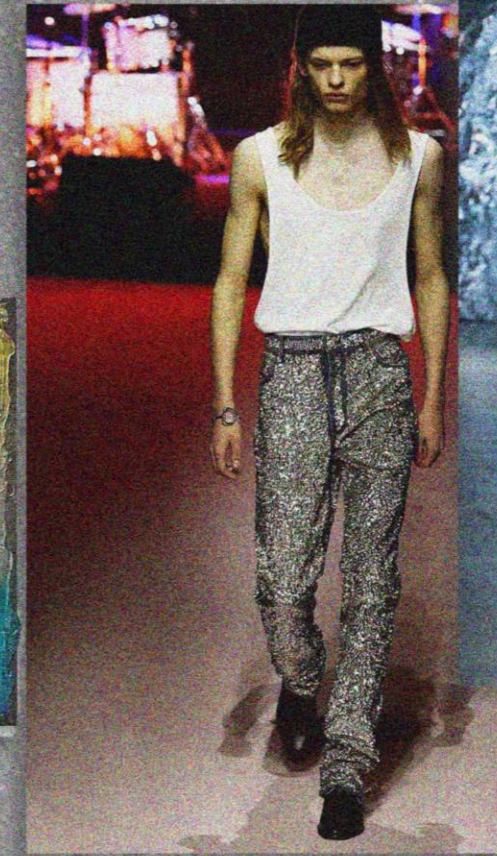
TP60136

TP60137

TP60138

TP9099

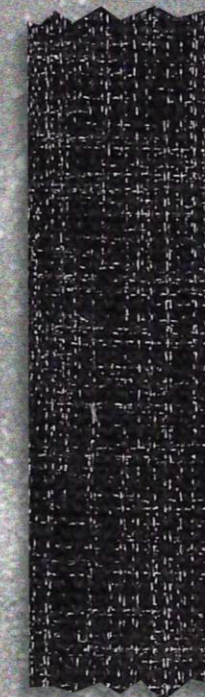
#glimmer #shimmer #concept



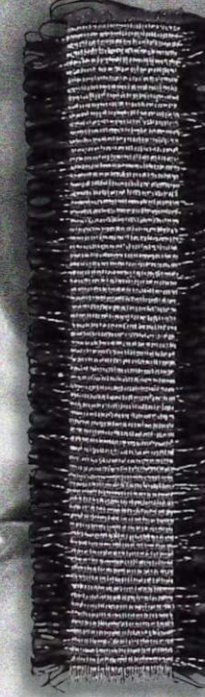
TP22530



TP22531



TP22532



TP22533



*Capsule* Limited  
[www.capsulelimited.com](http://www.capsulelimited.com)