

NEWSTARWDH

Unit: mm

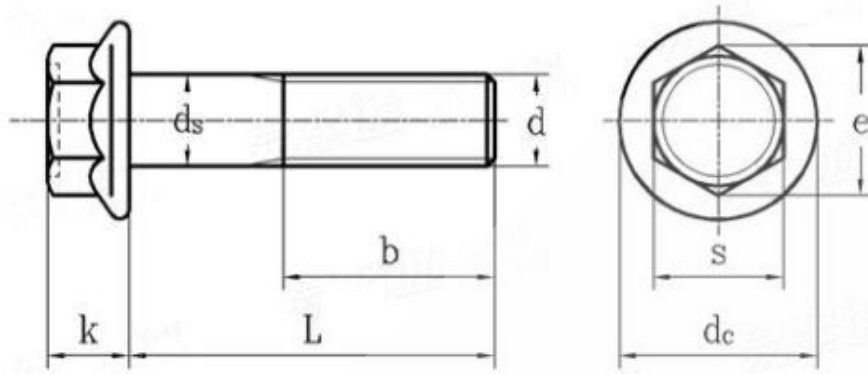
Screw Thread		M5	M6	M8	M8	M10	M10	M10	M12
d									
P	Thread Pitch	0.8	1	1	1.25	1.5	1.25	1	1.25
b	L ≤ 125	16	18	22	22	26	26	26	30
	125 < L ≤ 200	/	/	28	28	32	32	32	36
	L > 200	/	/	/	/	/	/	/	/
d_c	max	11.8	14.2	18	18	22.3	22.3	22.3	26.6
d_s	max	5	6	8	8	10	10	10	12
	min	4.82	5.82	7.78	7.78	9.78	9.78	9.78	11.73
k	max	5.4	6.6	8.1	8.1	9.2	9.2	9.2	11.5
s ①	max=nominal size	8	10	13	13	15	15	15	16
	min	7.78	9.78	12.73	12.73	14.73	14.73	14.73	15.73

Screw Thread d		M12	M12	M14	M14	M16	M16	M20	M20
P	Thread Pitch	1.5	1.75	1.5	2	1.5	2	1.5	2.5
b	L ≤ 125	30	30	34	34	38	38	46	46
	125 < L ≤ 200	36	36	40	40	44	44	52	52
	L > 200	/	/	/	/	57	57	65	65
d_c	max	26.6	26.6	30.5	30.5	35	35	43	43
d_s	max	12	12	14	14	16	16	20	20
	min	11.73	11.73	13.73	13.73	15.73	15.73	19.67	19.67
k	max	11.5	11.5	12.8	12.8	14.4	14.4	17.1	17.1
s ①	max=nominal size	16	16	18	18	21	21	27	27
	min	15.73	15.73	17.73	17.73	20.67	20.67	26.67	26.67

DIN 6921 - 1983

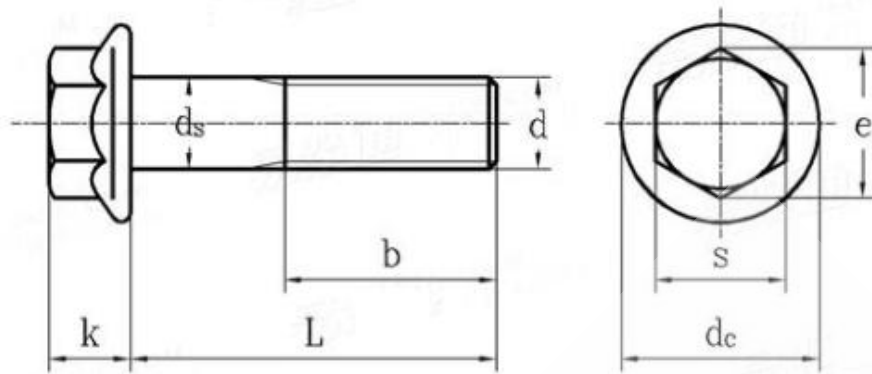
DIN EN 1665 - 1998

IFI 111



Unit: inch

Size		1/4	5/16	3/8	7/16	1/2	9/16	5/8	3/4
PP		20	18	16	14	13	11	10	9
d_s	max	0.2500	0.3125	0.3750	0.4375	0.5000	0.5625	0.6250	0.7500
	min	0.2450	0.3065	0.3690	0.4305	0.4930	0.5545	0.6170	0.7410
s	max	0.3750	0.5000	0.5625	0.6250	0.7500	0.8125	0.9375	1.1250
	min	0.367	0.489	0.551	0.612	0.736	0.798	0.922	1.100
e	max	0.433	0.577	0.650	0.722	0.866	0.938	1.083	1.299
	min	0.409	0.548	0.618	0.685	0.825	0.895	1.034	1.234
d_c	max	0.56	0.68	0.81	0.93	1.07	1.19	1.33	1.59
k	max	0.28	0.32	0.39	0.46	0.51	0.57	0.62	0.73



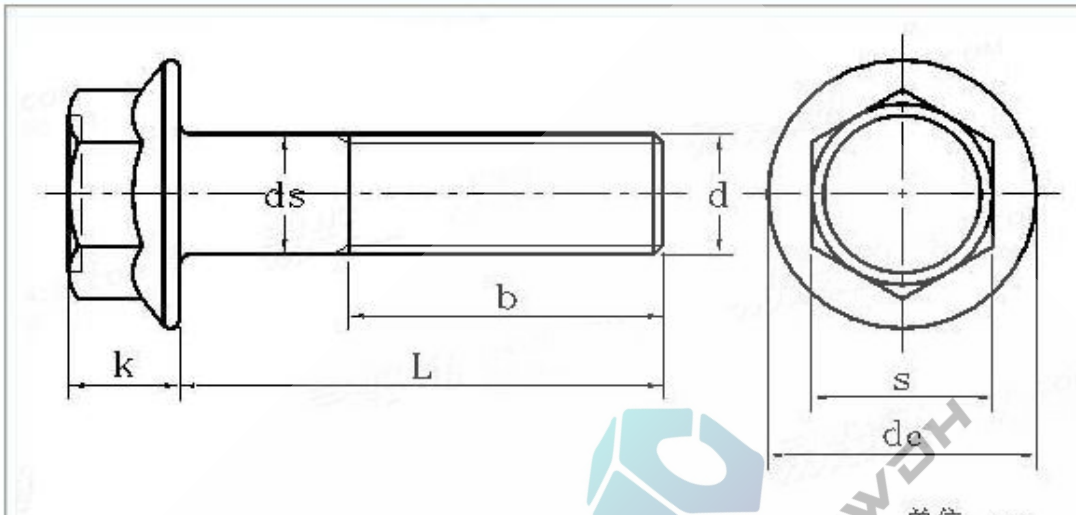
Unit: mm

Screw Thread d		M5	M6	M8	M10	M12	(M14)	M16
P	Pitch	0.8	1	1.25	1.5	1.75	2	2
b	L ≤ 125	16	18	22	26	30	34	38
	125 < L ≤ 200	/	/	28	32	36	40	44
	L > 200	/	/	/	/	/	/	57
dc	max	11.4	13.6	17	20.8	24.7	28.6	32.8
k	max	5.6	6.8	8.5	9.7	11.9	12.9	15.1
s	max	7.00	8.00	10.00	13.00	15.00	18.00	21.00
	min	6.64	7.64	9.64	12.57	14.57	17.57	20.16
ds	max	5	6	8	10	12	14	16
	min	4.82	5.82	7.78	9.78	11.73	13.73	15.73

ISO 4162 - 1990

ISO 4162 - 2012

JIS B 1189



单位: mm

螺纹规格 d	螺距 P	ds		k	s		dc
		max	min	max	max	min	max
M4	0.7	4	3.9	4.2	7	6.8	10.5
M5	0.8	5	4.9	5	8	7.8	12
M6	1	6	5.9	6	10	9.8	14
M8	1/1.25	8	7.85	8	12	11.75	17.5
M10	1.25/1.5	10	9.85	10	14	13.75	21
M12	1.25/1.75	12	11.8	11.5	17	16.75	25
M14	1.5/2	14	13.8	13.5	19	18.65	29
M16	1.5/2	16	15.8	15	22	21.65	33

JIS B 1189 - 1987

JIS B 1189 - 2005

JIS B 1189 - 2014

d	d _s		s		k		b	
	max	min	max	min	max	min	L ≤ 6	L > 6
3/8	0.375	0.36	0.688	0.669	0.243	0.226	1	1.25
1/2	0.5	0.482	0.875	0.85	0.323	0.302	1.25	1.5
5/8	0.625	0.605	1.062	1.031	0.403	0.378	1.5	1.75
3/4	0.75	0.729	1.25	1.212	0.483	0.455	1.75	2
7/8	0.875	0.852	1.438	1.394	0.563	0.531	2	2.25
1	1	0.976	1.625	1.575	0.627	0.591	2.25	2.5
1-1/8	1.125	1.098	1.812	1.756	0.718	0.658	2.5	2.75
1-1/4	1.25	1.223	2	1.938	0.813	0.749	2.75	3
1-3/8	1.375	1.345	2.188	2.119	0.878	0.81	3	3.25
1-1/2	1.5	1.47	2.375	2.3	0.974	0.902	3.25	3.5
1-5/8	1.625	1.591	2.562	2.481	1.038	0.962	3.5	3.75
1-3/4	1.75	1.716	2.75	2.662	1.134	1.054	3.75	4
1-7/8	1.875	1.839	2.938	2.844	1.198	1.114	4	4.25
2	2	1.964	3.125	3.025	1.263	1.175	4.25	4.5
2-1/4	2.25	2.214	3.5	3.388	1.423	1.327	/	5
2-1/2	2.5	2.461	3.875	3.75	1.583	1.479	/	5.5
2-3/4	2.75	2.711	4.25	4.112	1.744	1.632	/	6
3	3	2.961	4.625	4.475	1.935	1.815	/	6.5
3-1/4	3.25	3.21	5	4.838	2.126	1.998	/	7
3-1/2	3.5	3.461	5.375	5.2	2.256	2.12	/	7.5
3-3/4	3.75	3.7109	5.75	5.562	2.447	2.303	/	8
4	4	3.9609	6.125	5.925	2.576	2.424	/	8.5
4-1/4	4.25	4.2228	6.5	6.288	2.768	2.608	/	9
4-1/2	4.5	4.4727	6.875	6.65	2.896	2.728	/	9.5
4-3/4	4.75	4.7227	7.25	7.012	3.088	2.912	/	10
5	5	4.9726	7.625	7.375	3.217	3.033	/	10.5
5-1/4	5.25	5.2226	8	7.738	3.408	3.216	/	11
5-1/2	5.5	5.4726	8.375	8.1	3.538	3.338	/	11.5
5-3/4	5.75	5.7225	8.75	8.462	3.729	3.521	/	12
6	6	5.9725	9.125	8.825	3.858	3.642	/	12.5