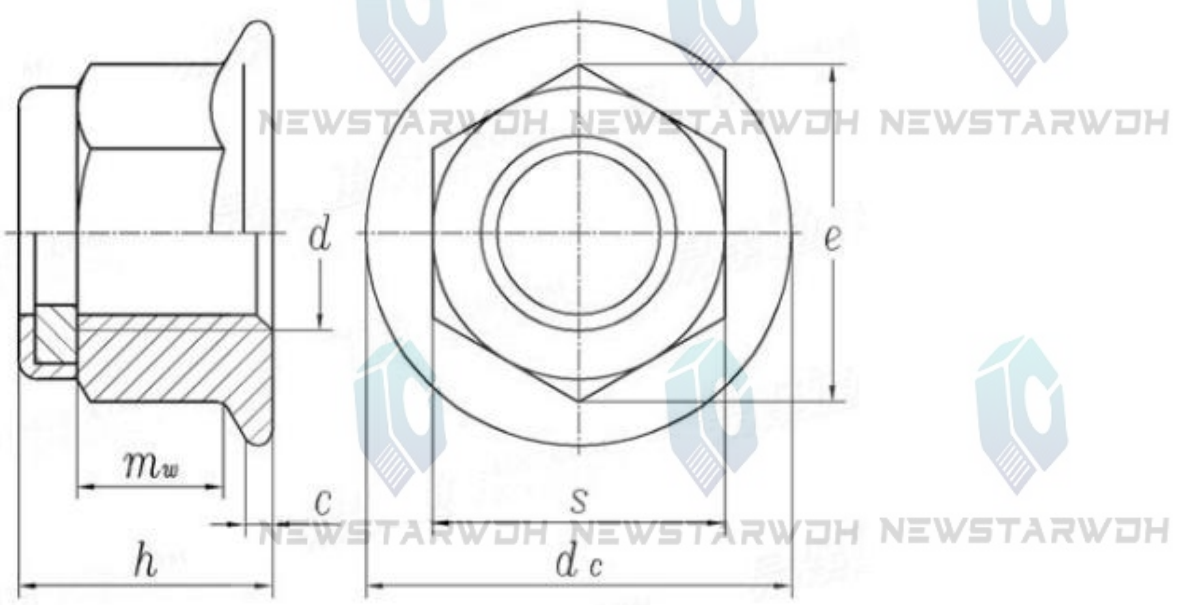
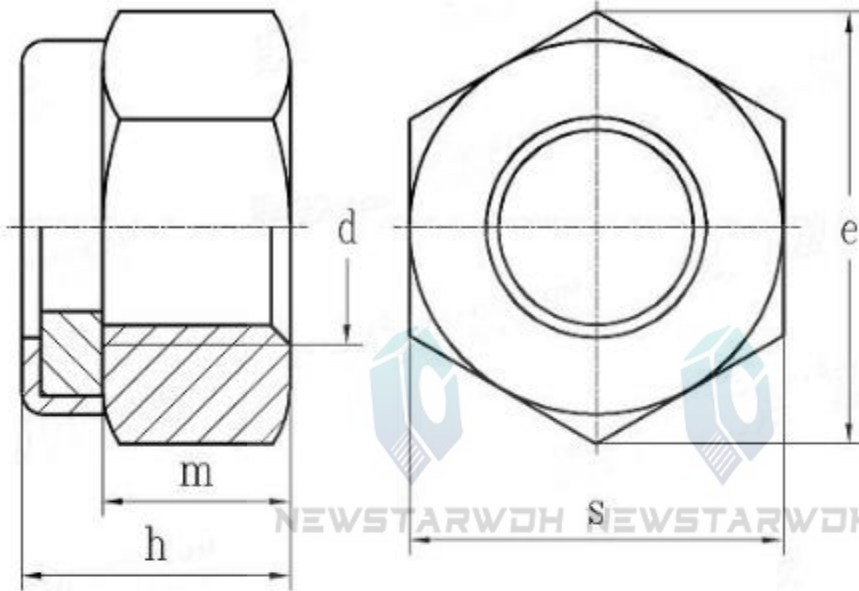


ANSI/ASME B 18.16.6



Unit: inch

Nominal Diameter <b>d</b>		<b>1/4</b>	<b>5/16</b>	<b>3/8</b>	<b>7/16</b>	<b>1/2</b>	<b>9/16</b>	<b>5/8</b>	<b>3/4</b>
<b>d</b>		0.2500	0.3125	0.3750	0.4375	0.5000	0.5625	0.6250	0.7500
<b>PP</b>	UNC	20	18	16	14	13	12	11	10
	UNF	28	24	24	20	20	18	18	16
<b>s</b>	max	0.4385	0.5020	0.5645	0.6895	0.7520	0.8770	0.9395	1.1270
	min	0.4280	0.4890	0.5510	0.6750	0.7360	0.8610	0.9220	1.0880
<b>h</b>	max	0.300	0.365	0.425	0.495	0.555	0.625	0.690	0.825
<b>m<sub>w</sub></b>	min	0.140	0.170	0.200	0.230	0.260	0.290	0.320	0.380
<b>c</b>	min	0.040	0.050	0.060	0.070	0.080	0.090	0.100	0.110
<b>d<sub>c</sub></b>	min	0.560	0.680	0.810	0.930	1.070	1.190	1.330	1.585
<b>e</b>	max	0.505	0.577	0.650	0.794	0.866	1.010	1.083	1.299
	min	0.488	0.557	0.628	0.768	0.840	0.982	1.051	1.240



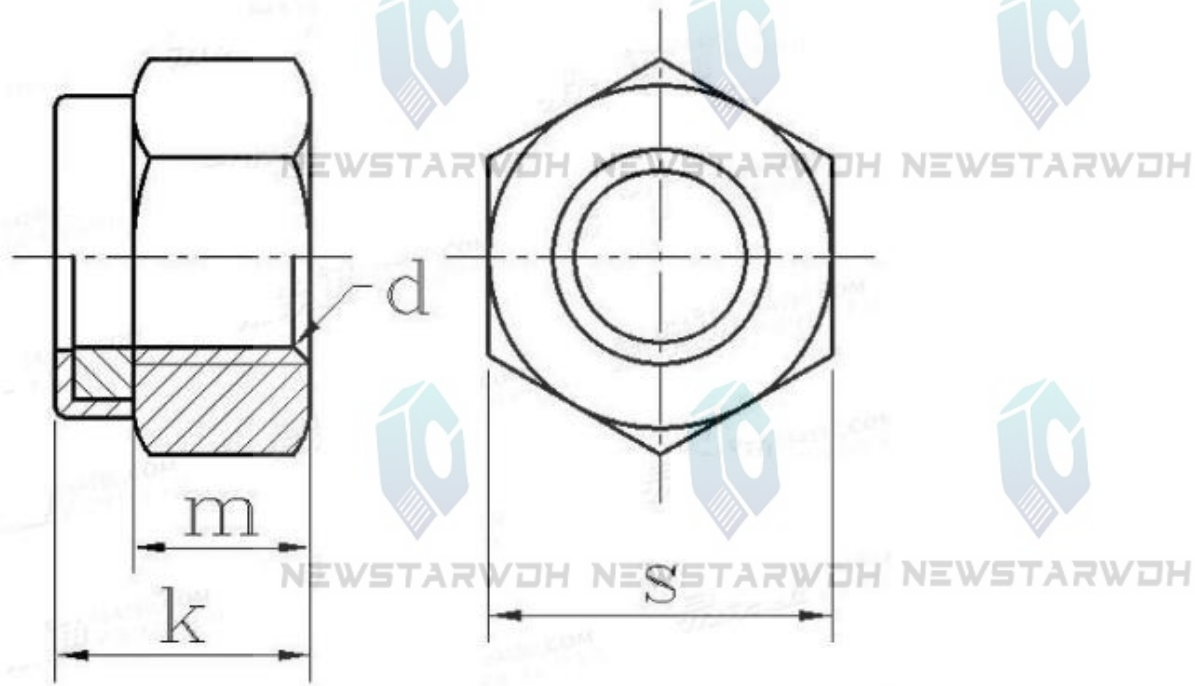
NEWSTARWDH

DIN 982

Unit: mm

Screw Thread		M5	M6	M7	M8	M10	M12	M14	M16	M18	M20	M22	M24
d													
<b>P</b>	Pitch	0.8	1	1	1.25	1.5	1.75	2	2	2.5	2.5	2.5	3
	Fine pitch1	-	-	-	1	1.25	1.5	1.5	1.5	2	2	2	2
	Fine pitch2	-	-	-	-	1	1.25	-	-	1.5	1.5	1.5	-
<b>e</b>	min	8.79	11.05	12.12	14.38	18.9	21.1	24.49	26.75	29.56	32.95	35.03	39.55
	max=nominal size	6.3	8	8.5	9.5	11.5	14	16	18	20	22	25	28
<b>h</b>	min	6	7.7	8.2	9.14	11.14	13.64	15.3	17.3	19.16	20.7	23.7	26.7
	max=nominal size	8	10	11	13	17	19	22	24	27	30	32	36
<b>s</b>	min	7.78	9.78	10.73	12.73	16.73	18.67	21.67	23.67	26.16	29.16	31	35
	max=nominal size	8	10	11	13	17	19	22	24	27	30	32	36
<b>m</b>	min	4.4	4.9	6.14	6.44	8.04	10.37	12.1	14.1	15.1	16.9	18.1	20.2
per 1000 units ≈ kg		1.4	3.1	3.2	6	11.7	16.6	21	37.8	51.6	68	86	127

DIN 985

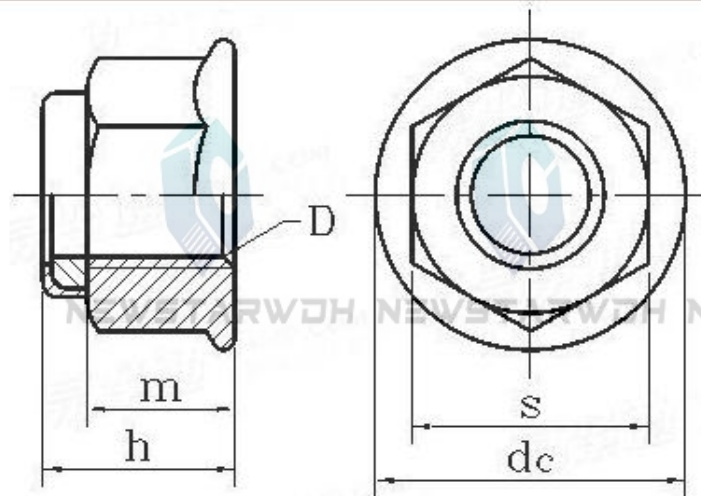


Unit: mm

Screw Thread d		M3	M4	M5	M5	M6	M7	M8	M10	M12	M14	M16	M18
<b>P</b>	Pitch (Coarse thread)	0.5	0.7	0.8	-	1	1	1.25	1.5	1.75	2	2	2.5
	Fine thread	-	-	-	-	-	-	1	1.25	1.5	1.5	1.5	2
	Fine thread	-	-	-	-	-	-	-	1	1.25	-	-	1.5
<b>k</b>	max=nominal size	4	5	5	-	6	7.5	8	10	12	14	16	18.5
	min	3.7	4.7	4.7	-	5.7	7.14	7.64	9.64	11.57	13.3	15.3	17.66
<b>m</b>	min	2.4	2.9	3.2	-	4	4.7	5.5	6.5	8	9.5	10.5	13
<b>s</b>	max=nominal size	5.5	7	8	-	10	11	13	17	19	22	24	27
	min	5.32	6.78	7.78	-	9.78	10.73	12.73	16.73	18.67	21.67	23.67	26.16
<b>per 1000 units≈kg</b>		0.5	1	1.4	-	2.4	3	5.1	10.6	17.2	26	34	45

Screw Thread d		M20	M22	M24	M27	M30	M33	M36	M39	M42	M45	M48
<b>P</b>	Pitch (Coarse thread)	2.5	2.5	3	3	3.5	3.5	4	4	4.5	4.5	5
	Fine thread	2	2	2	2	2	2	3	3	3	3	3
	Fine thread	1.5	1.5	-	-	-	-	-	-	-	-	-
<b>k</b>	max=nominal size	20	22	24	27	30	33	36	39	42	45	48
	min	18.7	20.7	22.7	25.7	28.7	31.4	34.4	37.4	40.4	43.4	46.4
<b>m</b>	min	14	15	15	17	19	22	25	27	29	32	36
<b>s</b>	max=nominal size	30	32	36	41	46	50	55	60	65	70	75
	min	29.16	31	35	40	45	49	53.8	58.8	63.8	68.1	73.1
<b>per 1000 units≈kg</b>		65	75	100	162	212	317	415	499	628	771	998

DIN 6926

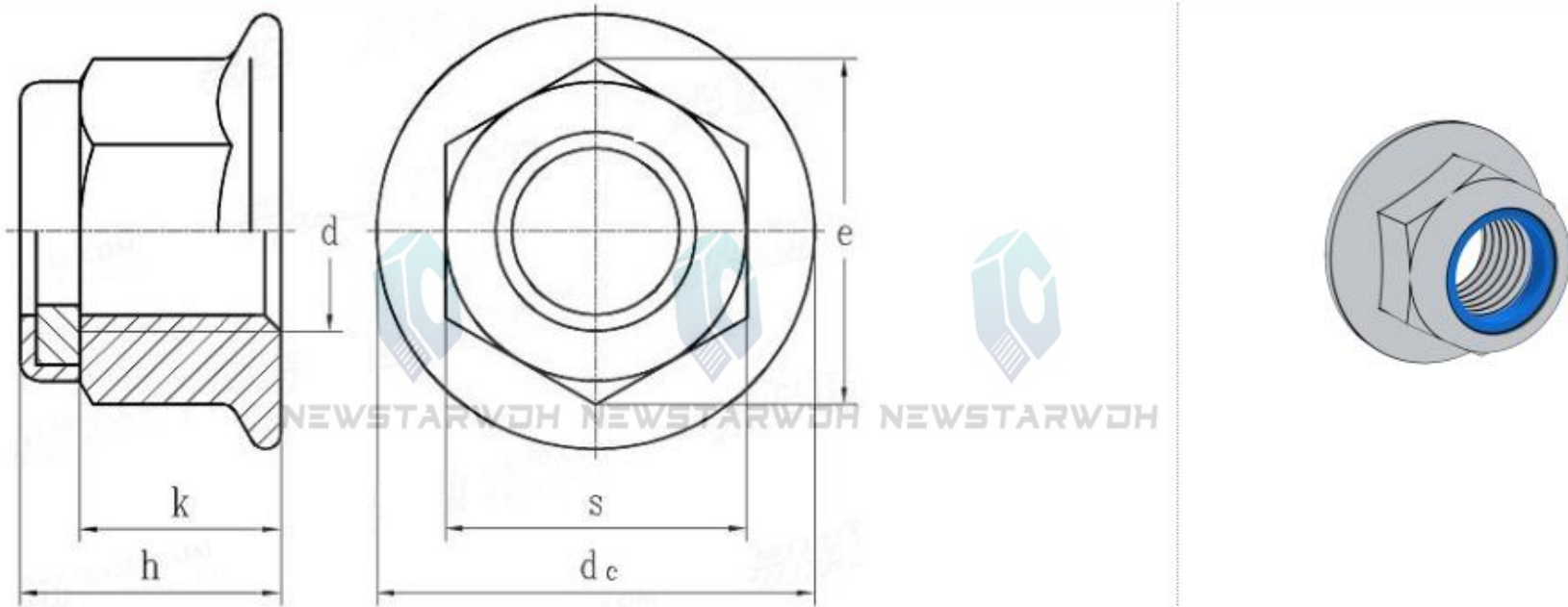


Unit: mm

D	Pitch P	dc max	h		m min	s	
			max	min		max	min
M5	0.8	11.8	7.1	6.74	4.7	8	7.78
M6	1	14.2	9.1	8.74	5.7	10	9.78
M8	1/1.25	17.9	11.1	10.67	7.6	13	12.73
M10	1/1.25/1.5	21.8	13.5	13.07	9.6	15	14.73
M12	1.25/1.5/1.75	26	16.1	15.67	11.6	18	17.73
M14	1.5/2	29.9	18.2	17.68	13.3	21	20.67
M16	1.5/2	34.5	20.3	19.46	15.3	24	23.67
M20	1.5/2.5	42.8	24.8	23.96	18.9	30	29.16



ISO 7043



Unit: mm

Screw Thread <b>d</b>		<b>M5</b>	<b>M6</b>	<b>M8</b>	<b>M10</b>	<b>M12</b>	<b>(M14)</b>	<b>M16</b>	<b>M20</b>
<b>P</b>	Pitch	0.8	1	1.25	1.5	1.75	2	2	2.5
<b>d<sub>c</sub></b>	max	11.8	14.2	17.9	21.8	26	29.9	34.5	42.8
<b>h</b>	max	7.1	9.1	11.1	13.5	16.1	18.2	20.3	24.8
	min	6.52	8.52	10.4	12.8	15.4	16.9	19	22.7
<b>s</b>	max	8	10	13	15	18	21	24	30
	min	7.78	9.78	12.73	14.73	17.73	20.67	23.67	29.16
<b>k</b>	min	4.7	5.7	7.64	9.64	11.57	13.3	15.3	18.7