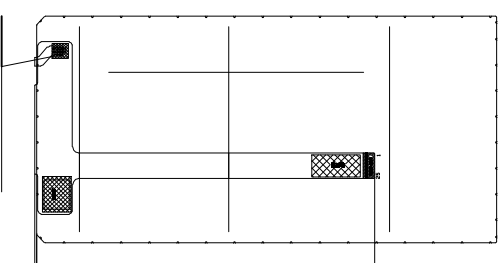
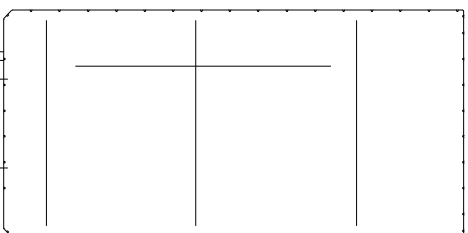
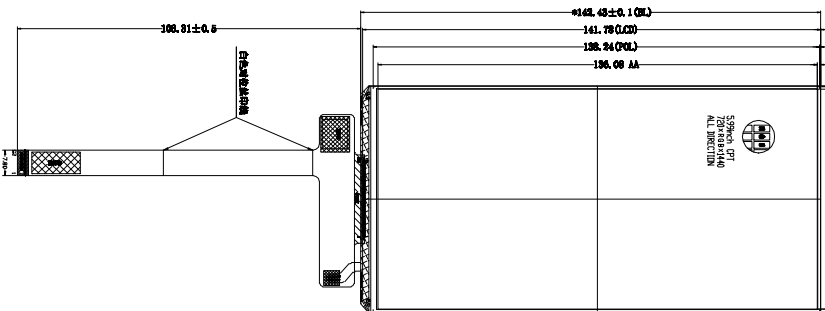


CPT+ILI9881C

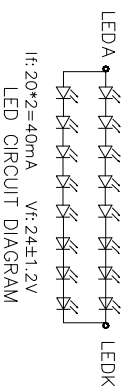
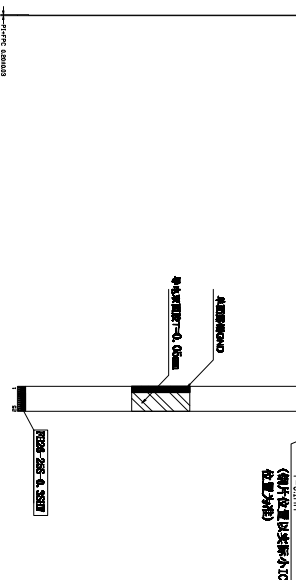
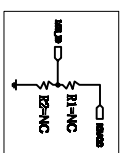
401.34±0.10(L)	4.10
76.04(0.0)	4.35
68.54(0.0)	4.35
88.04(L)	4.10

41.81±0.05
(MAXIMUM PRO)



PIN	SYMBOL
01	LEDA
02	LEDK
03	ID
04	TR
05	RESSET
06	TDVCC
07	VCC3.3V
08	GND
09	TP+0
10	TPM0
11	GND
12	TPP1
13	TPM1
14	GND
15	CLAMP
16	CLKM
17	GND
18	TPP2
19	TPM2
20	GND
21	TPP3
22	TPM3
23	GND
24	NC
25	NC

背光亮度: 300cd/m² TYP
FPC弯折后参考图
FPC展开出货



背光亮度: 300cd/m² TYP

Display Type	TFT
Main driver IC	NORMAL BLACK TRANSMISSIVE CPT+ILI9881C-007000A
Operation Temperature	-20° C ~ 70° C
Storage Temperature	-30° C ~ 80° C
Connector	
Interface	
Backlight Color	WHITE
Backlight Forward Voltage	Vf=24V(TYP)(If=40mA)
CUSTOMER PROJECT NO:	

- NOTE:
1. GENERAL TOLERANCE: ±0.2.
 2. (.,.) IS REFERENCE DIMENSION.
 3. COMPLIABLE ROHS.
 4. 客户机壳上的泡棉需注入玻璃单边0.3MM (MIN), 防止漏光.
 5. 客户需保证触摸屏下表面到玻璃上表面最少0.3MM以上(非贴合)

DRAWN	LQ
CHECKED	
APPROVED	
CUSTOMER'S APPROVAL	
第一次出图	
SYMBOL	
AMENDMENT	
SIGN	
DATE	20181026

TITLE	MODULE SPEC.
DRAWING NO.	RX1060087-A
PROJECT NO.	RX1060087-A
UNIT	mm
SCALE	FIT
3rd Angle	SHDEET 1 OF 1
RESHINE TECHNOLOGY CO., LIMITED	