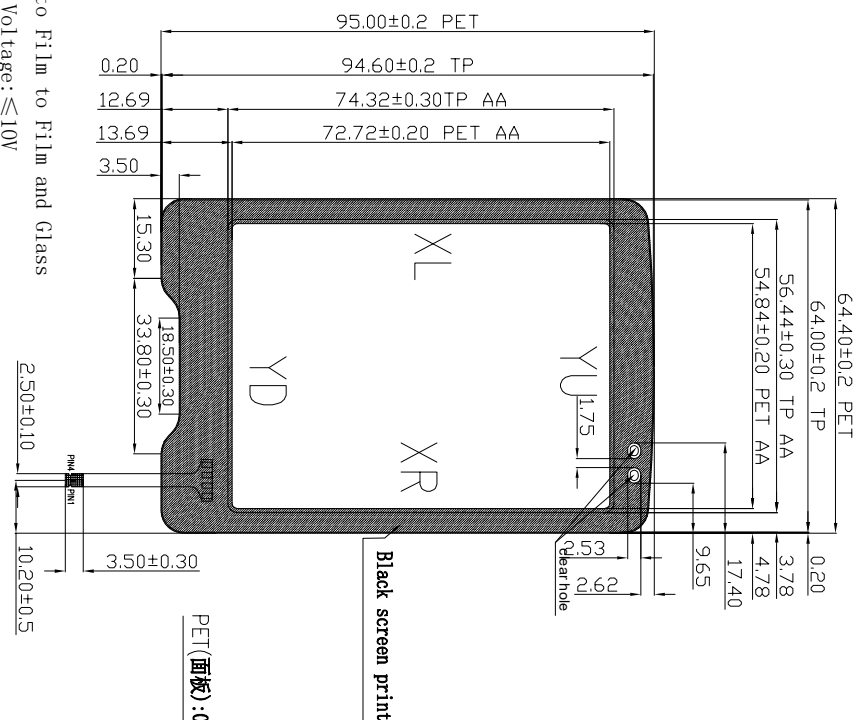


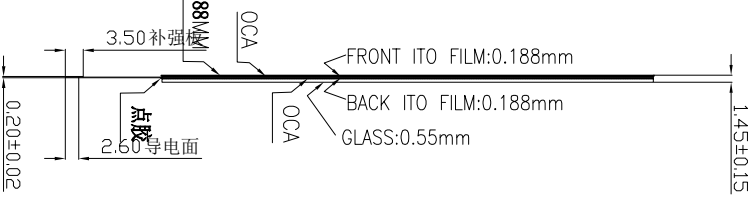
PIN1 ~ PIN3	300 ~ 900	Ω
PIN2 ~ PIN4	150 ~ 600	Ω

REV.	DESCRIPTION	DATE

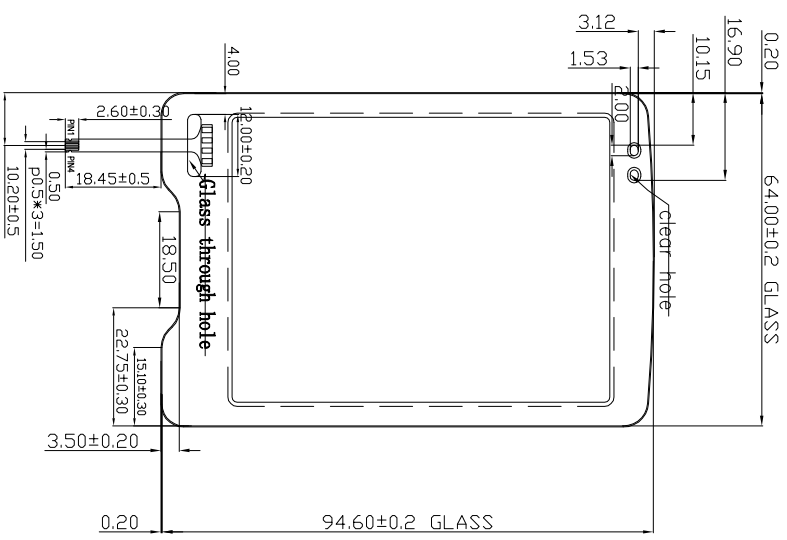
Front view



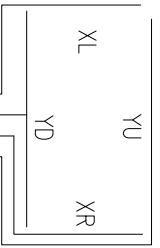
Side view



Back view



Logic diagram:



- Notes:
1. Tape: Pet to Film to Film and Glass
 2. Operating Voltage: $\leq 10V$
 3. Operation Temperature: $-20^{\circ}C \sim 70^{\circ}C$
Storage Temperature: $-25^{\circ}C \sim 75^{\circ}C$
 4. Life Time: $> 1,000,000$ times
 5. PET: Clear hard coating
and Clear ring ITO Film
 6. Linearity: 1.5% or less
 7. Transmittance: $\geq 70\%$
 8. Surface Hardness $\geq 3H$ (pencil)
 9. Unless stated tolerance: ± 0.2

SCALE: 1 : 1 NOT TO SCALE		RESHINE DISPLAY (HK) TECHNOLOGY	
PAGE: 1 OF 1		Co., Limited	
TOUCH SCREEN TAIL PIN OUT (VIEWED FROM FRONT)	DESCRIPTION	INTTS MM	DATE
PIN	DESCRIPTION		
1	YU		2017-07-26
2	XR		2017-07-26
3	YD		2017-07-26
4	XL		2017-07-26

GENERAL TOL. 0.20mm

APPROVALS

APP	Mychan	2017-07-26
CHK	Amor11	2017-07-26
DWN	Amor11	2017-07-26

MODEL NUMBER: RXX-040006-01

778-KSN3, SAS

PROJECTION

DATE: 2017-07-26

Tel: 0755-29190292 Fax: 0755-29190291

CUSTOMER P/N: