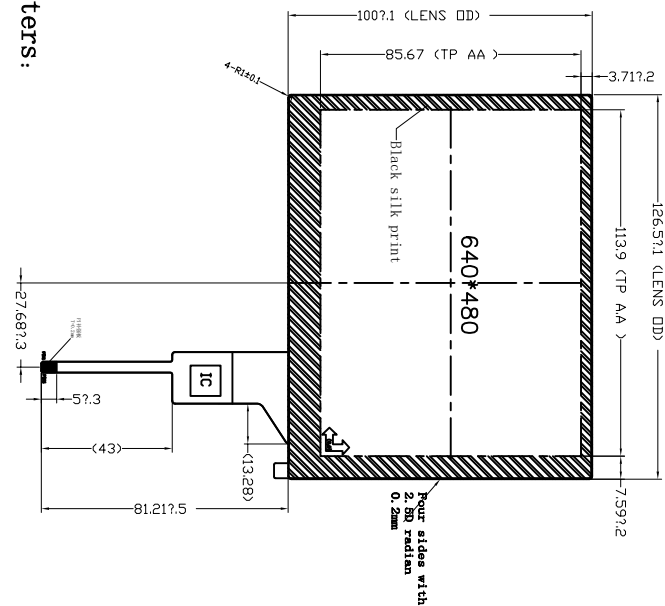


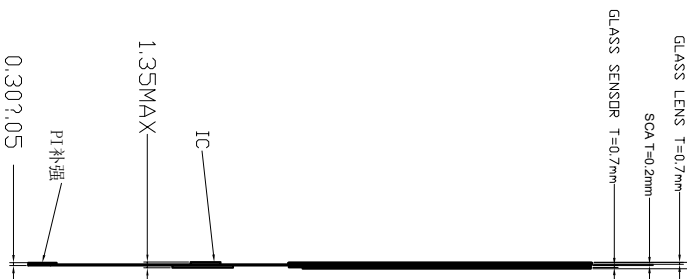
Rev	Nature of Modification	DATE
1.0	First view	

Front view

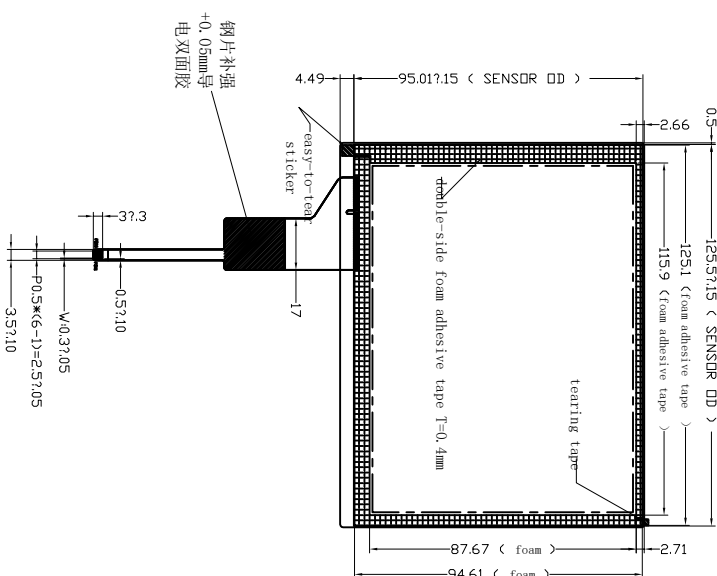
TP Total T=2.0mm±0.1<including foam with T=0.4mm>



Side view



Back view



Technical parameters:

1. GLASS LENS+GLASS ITO+PPC
2. GLASS ITO:0.7mm
3. GLASS LENS:0.7mm (Asahi glass)
4. 引线: PPC
5. IC: GT911
6. Total thickness: T=2mm(including foam tape with thickness T=0.4mm)

Elucidation	TP Engineering Drawing	Light Transparency	85% Min
Type	G+G	Surface Hardness	6H
IC	GT911	Operating Temp	-10° C-60° C, 20-90% RH
Drive Model	Mutual Capacitance	Storage Temp	-20° C-70° C, 20-90% RH
Drive voltage	2.8-3.3 V	Connector	PPC

PIN	COMMENTS
1	RESET 3.3V
2	INT 3.3V
3	SCL 3.3V
4	SDA 3.3V
5	VDD 3.3V
6	GND

SCALE: 1 : 1
NOT TO SCALE

PAGE: 1 OF 1

GENERAL TOL.
0.50mm

APPROVALS

APP:

CHK:

DWN: MHY

UNITS
MM

DATE

MODEL NUMBER :

RXC-66056142A-1.0

2018-03-12

Reshine Display (HK) Technology Co., Limited

Tel: 0755-29190292 Fax: 0755-29190291

MODEL NUMBER :

RXC-66056142A-1.0

2018-03-12

CUSTOMER NO.:

DATE: