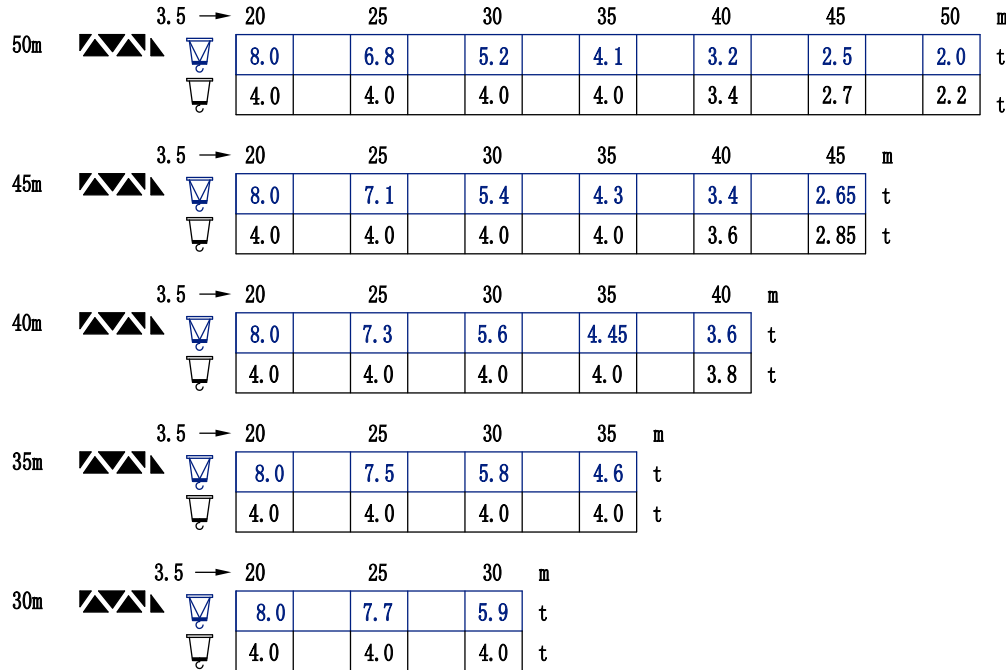


# 载荷特性 Load diagrams

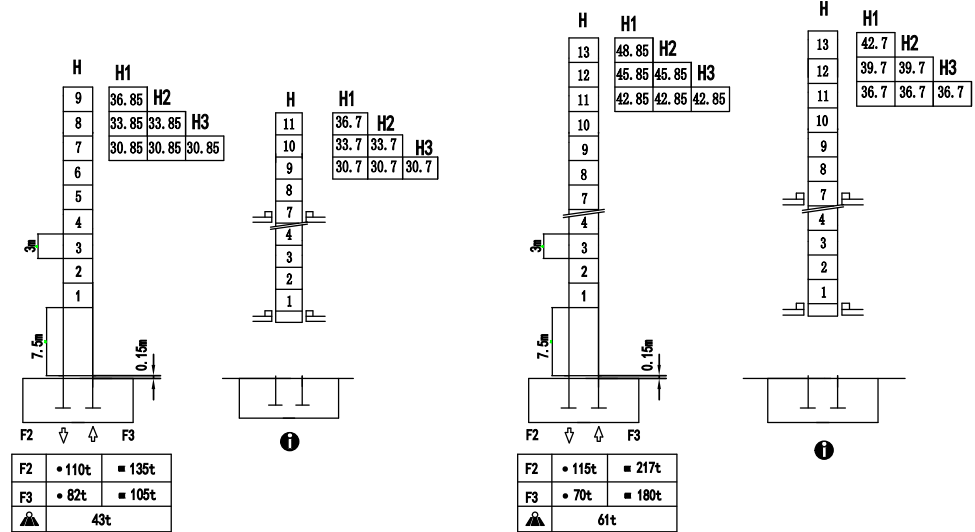


# TCL5020-8

## 塔身截面 Mast

1.6m×1.6m

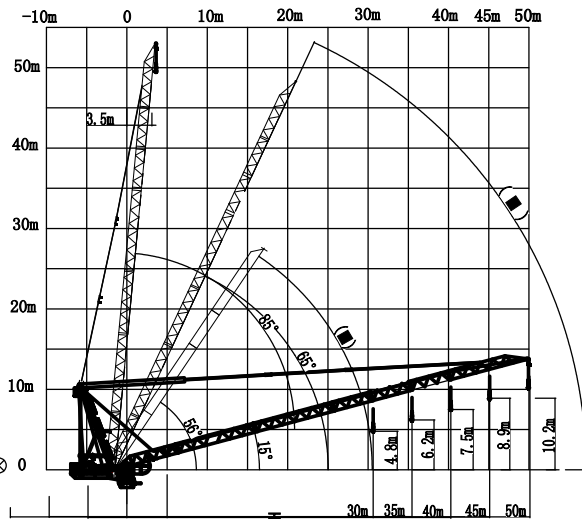
2.0m×2.0m



H1、H2、H3分别代表幅度为30m, 40-45m, 50m时臂根铰点高度  
 H1、H2、H3 is relatively for the height under with a jib radius of 30m, 40-45m, 50m.

F 反力 Reactions  
 • 工作状态 in service  
 ■ 非工作状态 Out of service  
 ⊕ 自重 Self-load  
 ⊖ 不带载荷及配重 Without load and ballast  
 ⊕ 最大臂长及标准高度时的自重 With longest jib and Free standing height

# 载荷特性 Load diagrams



☛ Weathervaning position 风向标位置  
 ⊗ Jib hinge shaft 臂根铰点

# 附着 Anchorages

