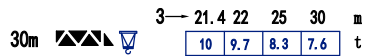
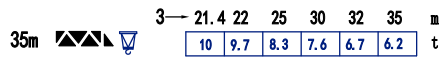
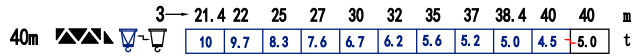
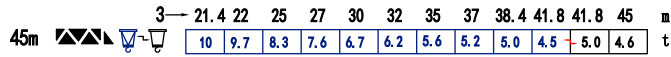
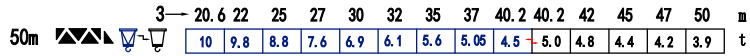
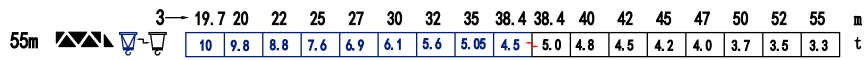
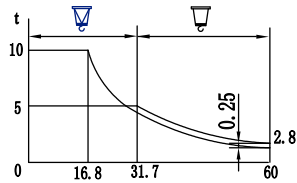


载荷特性 Load diagrams

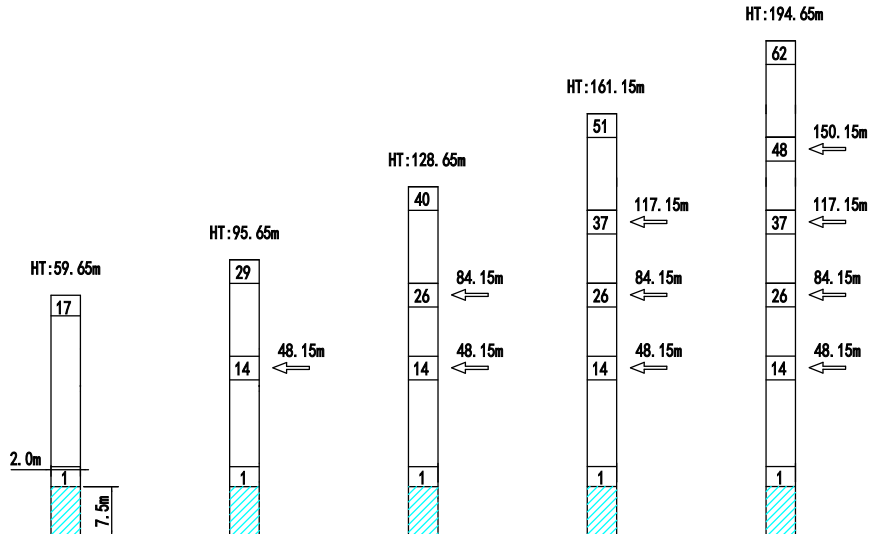


$\nabla = \nabla - 0.25t$



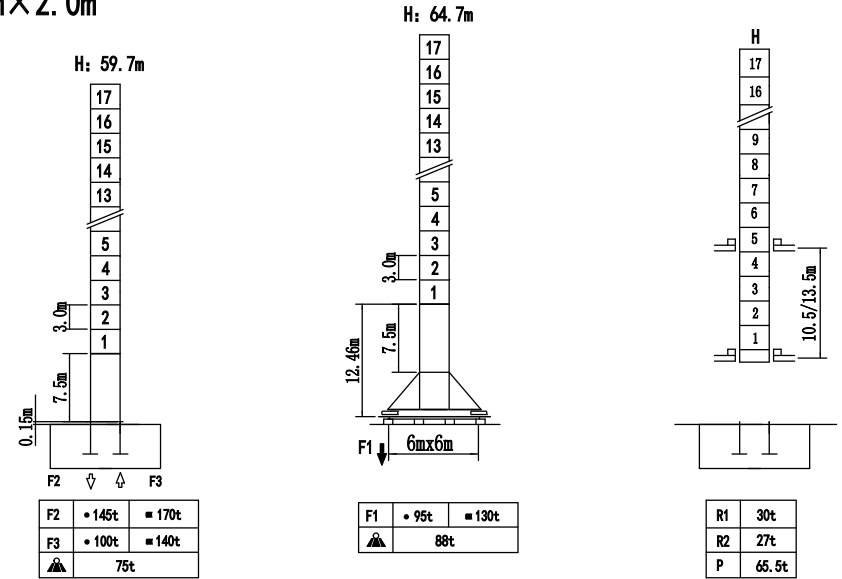
标准小车可使用2/4倍绳率。(使用四倍绳率时,应从二倍率的载荷中减去0.25吨)
 Standard trolley 2/4 fall. (When using ∇ subtract 0.25t from the loads ∇)

附着 Anchorages



塔身截面 Mast

2.0m×2.0m



F 反力 Reactions	• 工作状态 in service	自重 不带载荷及配重 Without load and ballast
	■ 非工作状态 Out of service	最大臂长及标准高度时的自重 With longest jib and free standing height

爬升 Climbing crane

