



沈阳蓝光  
SHENYANG BLUELIGHT

# BLUELIGHT

DRIVE THE FUTURE

HTTP: //WWW.SYLG.CN  
2020 . 6

Shenyang Bluelight Automatic Technology Co.,Ltd.

Tel: 024-23782971

Address: 99 Chuangxin 1st Road, Hunnan District, Shenyang

# SHENYANG BLUELIGHT

# DRIVE THE FUTURE

- East China Office  
Tel: 18602454800
- South China Office  
Tel: 13709843276
- North China (Ningjin) Office  
Tel: 18642018935
- North China (Haerbin) Office  
Tel: 13936288027

- Ministry of Foreign Trade  
Tel: +86-24-23780807-717, +86-24-83786420  
E-mail: zhangruiyan@sylg.cn

Shenyang Bluelight Automatic Technology Co.,Ltd.



# COMPANY PROFILE



## Elevator Expert

Established in 1989, Shenyang Blue Light was founded by three young master supervisors from Shenyang University of Technology. With more than 30 years' expertise in elevator core products research, develop, production and services, Shenyang Blue Light has earned its fame as the National High-Tech enterprise, member of the China Elevator Association and ISO9001:2015 Quality Management System certified company. Shenyang Blue Light is the only supplier in China who owns the Independent Intellectual Property Rights to provide complete elevator system solutions include but no limited to logic control, driver, traction machine and monitoring.

## Advanced Technology

Over the years, Shenyang Blue Light keeps focusing on innovating technology and has successfully developed: China's first Digital Full Closed-Loop Variable Voltage Variable Frequency Elevator Controller, China's first 32-bit Microprocessor Serial Communication VVVF Elevator Controller, China's first Elevator Safety Remote Monitoring System (Elevator Bodyguard) and many more innovative products with cutting edge technologies. Leading the progress of automatic VF drive technology transforms into digital and intelligent, our BL2000 and BL3000 series elevator controllers and VF drivers are top rated in both technology and market share. The iBL series Intelligent Elevator Controller Systems support connection with smart terminal devices such as a mobile phone to provide various practical and high end functions to guarantee safety. Functions include debugging, fault diagnosis & troubleshooting and mobile remote monitoring, make the "Internet + Elevator" application really come true. Now, as the elevator system pioneer, Blue Light has a number of features became the industrial standards.



## Tremendous Competence

Blue Light has Design and Manufacture plants located in Liaoning, Zhejiang and Guangdong provinces. Main sales & services offices are distributed in North East China, North China, East China, South China, South West China, North West China and the network covers most of the country. Every year, Blue Light provides all kinds of elevator services for more than 500 domestic and international customers, including South Korea, Japan, Russia, Saudi Arabia, Turkey, The United Arab Emirates, India, Malaysia and Taiwan.

In the future, Blue Light will continue taking responsibility in elevator industry contribution, focus on the Intelligent Control of Elevator System as our core concept, persevere with our diligence and expertise to provide professional products and service to every customer.







## CATALOGUE

- |   |  |           |
|---|--|-----------|
| 1 | <b>IBL6 Elevator Integrated Controller</b> | <b>01</b> |
| 2 | <b>Car Door Integrated Controller</b>      | <b>05</b> |
| 3 | <b>Elevator Integrated Control Cabinet</b> | <b>07</b> |
| 4 | <b>Elevator Emergency Rescue Device</b>    | <b>13</b> |
| 5 | <b>Elevator Control Board</b>              | <b>17</b> |
| 6 | <b>Elevator Accessories</b>                | <b>22</b> |

SHENYANG BLUELIGHT  
DRIVE THE FUTURE

## AWARDS & HONORS

7 innovation patents, more than 30 software copyrights,  
more than 50 utility and design patents

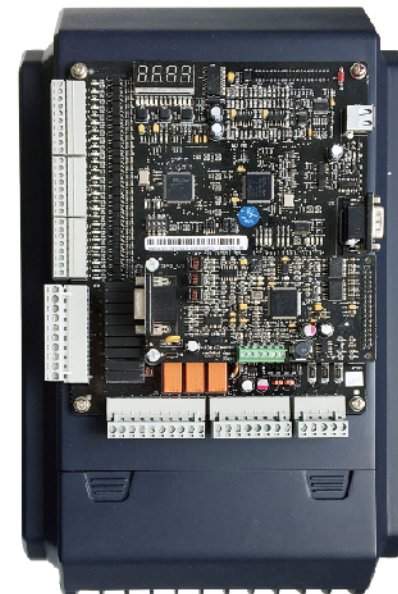




# iBL6 ELEVATOR INTEGRATED CONTROLLER

## Intelligent Control Leading the Future

iBL6 is the new generation intelligent elevator integrated controller. It combines the functions of logical control and variable frequency drive. It has Advanced Technology, Optimal Performance, High Reliability, Easy to Use and many more excellent features.



### 1. Advanced Technology

- Perfectly combines intellectual logic control and high performance VVVF drive to achieve complete integration.
- Adopts advanced vector control technology, demodulates motor with high precision, takes full advantage of motor capacity, improves elevator performance and riding comfort.
- Advanced space vector PWM algorithm, improves great efficiency than traditional sine/cosine PWM method and saves more energy.

### 2. Optimal Performance

- Generates optimized speed curve based on target floor to achieve lift direct stop with high accuracy and efficiency.
- CAN BUS technology satisfies serial communication in high speed and reliability. Simplifies system wiring and extension.
- Compatible with wireless remote monitoring system on internet, convenient for remote commissioning guidance, maintenance and elevator monitoring.

### 3. Easy to Use

- Compatible with smart phone tuning with comprehensive information. Support parameters and error data remote transfer, online guidance, balance coefficient detection and other functions. Make the tuning process easy and efficient.
- Simple auto-tuning (self-learn) operations to get motor parameters and initial angle for both Rotating and Static methods.
- Fuzzy logic control for elevator start-up with non-load-compensation. Excellent comfort feeling even without weighting device.
- When working with Blueight Synchronous traction machine, controller could use the information from its predefined machine model, save machine parameter input and auto-tuning process, improves the commissioning efficiency and maximize machine performance.

### 4. High Reliability

- Advanced two 32-bit CPU and a FPGA cooperation for complete elevator control to ensure high elevator safety and reliability.
- Redundancy design and full software-hardware protection to guarantee elevator safety and reliability.
- Professional EMC tested, enhanced anti-electromagnetic interference ability and suitable for complicated job site.
- Monitoring the cutting current from controller to machine every time elevator stops.

## Model Description

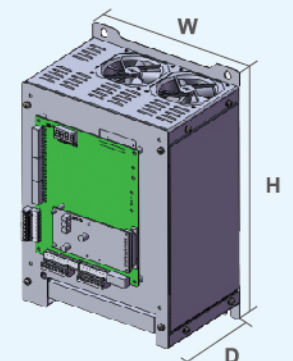
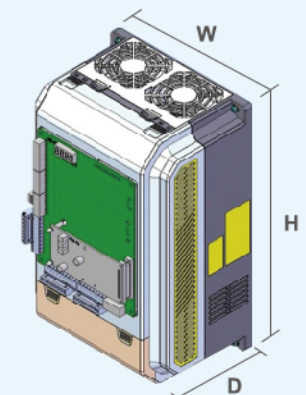
BL6 - U O 4 022 - □□

BL6	U	O	4	022	□□
Controller series	Controller type	Protective structure	Voltage level	Maximum machine power	Additional type
	U: Integrated controller	C: Closed type	4: 380V	002: 2.2KW	Null: Serial integrated controller with acrylic front plate or without front plate
				003: 3.7KW	
				005: 5.5KW	W: With metal plate
				007: 7.5KW	
				011: 11KW	B: Parallel integrated controller
	S: High performance inverter	O: Open type	2: 220V	015: 15KW	C: Ultra-thin no case
				018: 18.5KW	S: Small size integrated controller
				022: 22KW	
				030: 30KW	H: Villa integrated controller
				037: 37KW	N: Plastic case
				045: 45KW	
				055: 55KW	M: Modular Type integrated controller
				075: 75KW	D: Single phase integrated controller

## M Series Integrated Controller Dimension Table (400V)

Controller Model	Exterior Dimension		
	W	H	D
BL6-UO4005-NM	222	348	200
BL6-UO4007-NM			
BL6-UO4011-NM			
BL6-UO4015-NM			

Controller Model	Exterior Dimension		
	W	H	D
BL6-UO4018-M	280	418	203
BL6-UO4022-M		480	228
BL6-UO4030-M			
BL6-UO4037-M			
BL6-UO4045-M	441	650	324
BL6-UO4055-M			
BL6-UO4075-M			





Specification

Model BL6-U□40□□-□□		4002	4003	4005	4007	4011	4015	4018	4022	4030	4037	4045	4055	4075
Max Motor Power(KW)		2.2	3.7	5.5	7.5	11	15	18.5	22	30	37	45	55	75
Rated Output	Rated Output Capacity(KVA)	4.0	5.9	9	12	18	22	27	32	43	53	63	78	106
	Rated Output Current(A)	5.5	9	14	18	27	34	41	48	65	80	96	128	165
	Max Output Voltage(V)	3-phase, AC380 (Corresponding to the input voltage)												
	Rated Frequency(Hz)	50												
	Max Output Frequency(Hz)	120												
Input Power	Rated Voltage (V)	3-phase, AC380												
	Rated Frequency (Hz)	50												
	Rated Input Current (A)	10	12	17	22	32	41	49	58	78	96	115	147	190
	Allowable Voltage Fluctuation	±15%												
	Allowable Freq Fluctuation	±5%												
Model BL6-U□20□□-□□		2002	2003	2005	2007	2011	2015	2018	2022					
Max Motor Power(KW)		2.2	3.7	5.5	7.5	11	15	18.5	22					
Rated Output	Rated Output Capacity(KVA)	4	7	10	14	20	27	33	40					
	Rated Output Current(A)	11	17	25	33	49	66	80	96					
	Max Output Voltage(V)	3-phase, AC220 (Corresponding to the input voltage)												
	Rated Frequency(Hz)	50												
	Max Output Frequency(Hz)	120												
Input Power	Rated Voltage (V)	3-phase, AC220 Single phase, AC220V (rated power 2.2kW ~ 11kW)												
	Rated Frequency (Hz)	50												
	Three Phase Rated Input Current (A)	15	21	27	40	52	68	92	110					
	Single Phase Rated Input Current (A)	26	37	47	70	91								
	Allowable Voltage Fluctuation	+10%, -15%												
Allowable Freq Fluctuation	±5%													
Common Features And Specification For All Model														
Basic Features	Elevator control mode	Simplex Collective, Duplex Collective, 3 ~ 8 units Group Control												
	Elevator speed range	0.5 ~ 4m/s												
	Applicable highest floor	64												
	Applicable elevator type	Passenger, Hospital, Panoramic, Goods, Villa Elevator												
	Applicable motor	Geared Traction Machine, Gearless Traction Machine												
	Communication mode	CAN Bus serial communication												
	Leveling accuracy	≤3mm												
Drive Features	Control mode	Space vector PWM(SVPWM) Closed loop vector control												
	Carrier frequency	8KHz (6 ~ 15KHz Adjustable)												
	Speed control range	1:1000												
	Speed control accuracy	±0.05%(25C±10C)												
	Speed response	30Hz												
	Torque limit	Yes (Set by parameter)												
	Torque accuracy	±5%												
	Frequency control range	0~120Hz												
	Frequency accuracy	Digital Ref: ±0.01% (-10C ~ +40C)												
	Frequency Ref resolution	Digital Ref: 0.01Hz												
	Output Freq resolution	0.01Hz												
	Overload capacity	150% rated current 60s; 180% rated current 10s												
	Startup torque	180% rated current 0Hz												
	Accel/decel time	0.001 ~ 600s												
	Main control function	Start without load compensation, battery operation, Auto tuning, Load compensation, Cooling fan control, Base block, Torque limit, CAN communication Ref, Acceleration/ Deceleration time, S curve acceleration/ deceleration, Monitor of main machine for which electric current can be effectively interdict or not when the car stop, Internal brake, PG freq dividing output, Automatic fault retry, Automatic fault reset, Parameter copy												

Common Features And Specification For All Model		
Control Input / output	OC input control power	Isolated external DC24V
	Relay output power	Isolated internal DC24V
	Low opto-isolated inputs	26-channel switches: rated load: 7mA/DC24V, upper freq100Hz
	High opto-isolated inputs	*4-channel switches: rated load: 8mA/AC110V, upper freq100Hz
	Programmable relay output	12-channel switches: 9-channel: 1NO, contactor capacity: 5A/30VDC, 5A/250VAC 3-channel: 1NO, contactor capacity: 8A/30VDC, 10A/250VAC
	CAN Communication Interface	2-channel: DUPLEX/ group control, HOP/COP, REMOTE Wireless monitoring
	RS-232 Communication Interface	1-channel: Digital operator/ PC monitoring/ Programmable interface
Displa	Digital Operator	LCD display in Chinese/English
	Monitoring Software Interface	Display parameters, elevator running status, digital wave
Main protection function	Over Current	Stop when current exceed 200% rated output current
	Fuse	Stop at fuse brake at main circuit
	Overload Protection	Stop at 150% rated current 60s/180% rated current 10s
	Overvoltage Protection	Stops at DC bus voltage over 720V (400V drive) or 410V (200V drive)
	Undervoltage Protection	Stops at DC bus voltage under 380V (400V drive) or 190V (200V drive)
	Heatsink Overheat Protection	Protect by thermistors
	IGBT Internal Protection	IGBT over current/ overheat/ short circuit/under voltage protection
	Motor Protection	Overload protection Stop
	Impact Restraining Circuit	Protect by contactor feedback
	Over Speed Protection	Protect at speed exceed the maximum allowable setting
	Speed Deviation Protection	Protect at speed deviation exceeds allowable value
	PG Fault Protection	Protect at PG disconnection/ phase error
	Auto-tuning Protection	Protect at auto-tuning fault.
	Open-phase Protection	Protect at input/output phase lost
	Door Interlock Fault	Protect at door interlock circuit open when running
	Safety Circuit Fault	Protect at safety circuit open when running
	Brake Circuit Fault	No brake open feedback signal after output brake open command
	Leveling Zone Fault	Protect at leveling zone signal faultProtect at output contactor fault
	Output Contactor Fault	Protect at signal running time exceeds limit
	Running Time Protection	Protect at floor counter fault
Structure	Floor Counting Fault	Protect at communication interference fault
	Communication Interference Fault	Hoistway parameter learning fault protection
	Hoistway Parameter Learning Fault	C: Closed IP20; O: Open IP00
Using ambience	Protection Degree	Forced air cooling
	Cooling	Placed in cabinet or Hanging installation
	Installation	-10C ~ +40C
	Ambient Temperature	5~95%RH, non-condensing
	Humidity	-20C ~ +60C
	Storage Temperature	In doors, without direct sunlight, dust, corrosive/explosive gases, oil fog, vapor, water
	Application Situation	dripping, or salty substances
	Altitude	<1000M
	Vibration	10 ~ 20HZ, <9.8m/S²;20 ~ 50HZ, <2m/S²



# CAR DOOR INTEGRATED CONTROLLER

## Bluelight Car Door Integrated Controller

Adopts high performance inverter module and advanced SVPWM control method to optimize Car Door motor control ability. It increases the level of integration, reduces the cost and risk of failure.



### Features

- Adopts advanced vector control technology to increase running accuracy and stability.
- Optimize speed curve to open and close door with ideal results.
- Thinner designing with only 50mm height.
- Compatible with most door machine types: asynchronous door machine without encoder, asynchronous door machine with encoder (full pulse), synchronous machine with encoder (full pulse).
- Compatible with PWM type Z signal encoder
- Complete protection features to guarantee driving safely.
- Configurable I/O terminals for easy and feasible wiring.
- Featured with LED screen and control buttons or can use Bluelight Digital Operator to control for easy operation on site.

### Model Description

#### BL6 - DU 2 0P4 - S

BL6	DU	2	0P4	S
Model Series	Door Motor Controller	Voltage Level	Maximum Motor Power	Controller Type
		2: 220V	0P4: 400W	S: Small size controller

### Bluelight Door Motor Integrated Controller Spec List

Voltage Level	Maximum Motor Power (W)	Controller Model	Exterior Dimension (Mm)					Weight (Kg)
			W	H	D	W1	H1	
200V (single phase)	400	BL6-DU20P4-S	215	152	51	205	129	1.6

### Elevator Door Motor Integrated Controller Spec List

Model BL6-DU20P4S		20P4
Output	Max Motor Power(KW)	400
	Rated Output Capacity(KVA)	0.6
Input	Grid Voltage(V)	2.6
	Grid Frequency(Hz)	1-PHASE, AC220, -15% ~ 20%
Drive Features	Max Output Frequency(Hz)	50HZ±3HZ
	Speed Range	99.00Hz
	Steady Speed	1:50(Open Loop V/F Control); 1:1000(Closed Loop Vector Control)
	Accuracy	±0.5% (Open Loop V/F Control); ±0.05% (Closed Loop Vector Control)
	Starting Torque	0Hz-180% (Closed Loop Vector Control);1Hz-150% (Open Loop V/F Control)
	Frequency Resolution	0.01Hz
	Current Resolution	0.01A
	Carrier Frequency	2kHz ~ 16kHz
Main Function	For asynchronous motor, support run directly without encoder after filling motor basic parameters; For synchronous motor, support tune motor parameters and encoder zero position with load or without load.	
	Support AC PMSM (Permanent Magnet Synchronous Machine) closed loop vector control with normal ABZ encoder, encoder Open collector output or push-pull output mode	
	Rise torque automatically with open loop V/F control mode	
	Support door width self-learning function.	
	Support auto-demonstrating function	
	Support obstruction auto-recognize function	
Protection	Support controller over voltage protection, under-voltage protection, over current protection, Open-phase protection, inter phase short-circuit protection and other functions.	
	Overload Protection	Stop at 150% rated current 60s/200% rated current 1s
I/O	Relay Output	3 outputs: 2 SPDTs (single-pole double-throw), 3A/30VDC; 1 normally closed contact, 16A/250VAC
	Optical Isolation Input	8 inputs with built-in current limiting resistor, external DC 24v power supply, distinguish polarity, and configurable by software.
Using Ambience	Cooling	Natural cooling
	Protection degree	IP20
	Ambient temperature Humidity	ambient humidity below 95% RH (non-condensing), -10°C ~ +40°C, ventilation
	Vibration	>1G lower than 20Hz
	Application situation	Indoors, without direct sunlight, dust, corrosive/explosive gases
	Storage situation	Clean/dry/indoors
	Altitude	<1000m, please consider reduce power for higher than 1000m



# ELEVATOR INTEGRATED CONTROL CABINET

## STJ-WVF5 Series Elevator Integrated Control Cabinet

Has equipped iBL6 series Intelligent Elevator Core System (IECS) to combine logic control with VVVF drive, it achieves efficiency by solid integration and intensive sharing of resource.

- To meet customer demands, the cabinet has different sizes to fit into applications no matter normal machine room, small machine room or machine roomless.
- The cabinet provides diversified interfaces to support wireless and wired remote monitoring, cell monitoring, elevator IC/ID card access management, sound broadcast and fire linkage control.
- Suitable for both geared and gearless traction machine.
- Supports elevator monitoring module over Internet: to collect data of elevator running, fault, maintenance and implement real-time elevator monitoring.

**Control Cabinet Voltage:** • AC3PH 220V±10%-15% 50Hz±5% • AC3PH 380V±15% 50Hz±5%

## Model Description

### SJT-WVF5 - I - B 40 XX - Y - 1

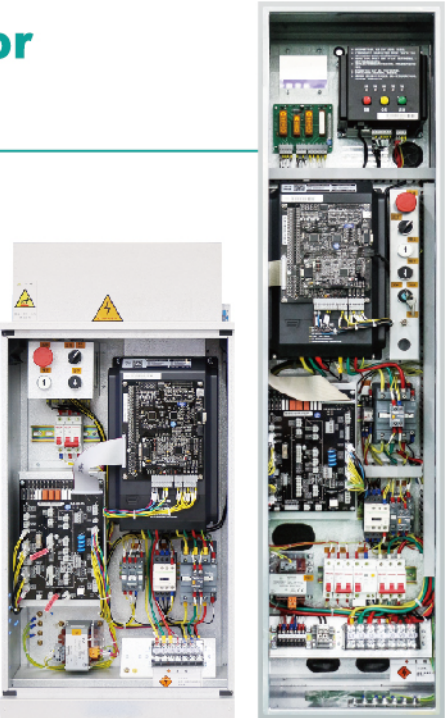
SJT-WVF5	I	B	40	XX	Y	1
Model series	Char/ Meaning	Char/Meaning	Char/ Voltage	Char/Power	Char/ Meaning	Char/Motor
	I: Modular	B: iBL6 series integrated controller	2: 220V	02: 2.2KW	Y: Machine Room	1: Synchronous
				03: 3.7KW		
				05: 5.5KW		
				07: 7.5KW		
	S: Standard	L: Yaskawa inverter +control board		11: 11KW	W: Machine Roomless	
				15: 15KW		
				18: 18.5KW		
				22: 22KW		
	E: Economic	F: Fuji inverter+ control board	4: 380V	30: 30KW	B: Villa	2: Asynchronous
				37: 37KW		
				45: 45KW		
				55: 55KW		
	F: Escalator			75: 75KW		

- 1. Application Scope:** simplex, duplex and group control for 3-8 elevators (with a group control board)
  - 2. Speed Range:** 0.25-4 m/s
  - 3. Applicable Elevators:** passenger elevators, freight elevators, bed elevators, residential elevators, panoramic elevators
  - 4. Stops:** <64
- It is applicable to geared traction machines and gearless permanent magnet machines.

## SJT-WVF5-I Series Modular Elevator Integrated Control Cabinet

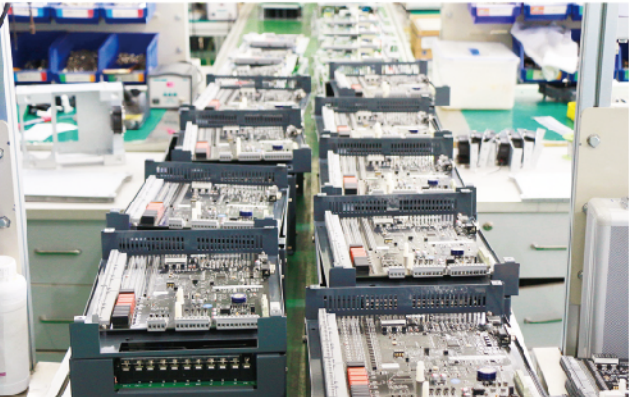
### Features

- Modular components for internal structure. Easy wiring, assembling and repairing.
- Internal interface board provides easy accessibility for hoistway cable and travelling cable. The simple plug-in type connection makes wiring mistake free and save time.
- Built-in over-voltage protection module to cut off power input immediately after neutral wire is broken. Ensure the safety of electric components.
- Built-in power source for brake system. Provides DC brake control which is more efficient and introduces less high frequency interference, heat or noise.
- Built-in DC24V switch power source, direct power output for Landing Call board, Car Board and so on. Provides up to 5A rated output current.
- Separate the brake system power source from the transformer, reduce its volume and weight. Thus, the size of the cabinet is reduced about 66% than normal cabinet.
- Light body design for the cabinet, minimize the amount of circuit breaker and contactor. The cabinet is wire socket groove free.



With Machine Room    Machine Roomless

Model	SJT-WVF5-I Series Modular Elevator Integrated Control Cabinet (with machine room)	SJT-WVF5-I Series Modular Elevator Integrated Control Cabinet (machine roomless)
Power	3.7 ~ 15KW	3.7 ~ 22KW
Elevator Speed	0.25 ~ 4m/s	
Maximum Stops	64 stops	
Cabinet Dimension	450 X 235 X 900mm	350 X 235 X 1350 mm
Controller	iBL6 series integrated controller (M)	
Wiring Connection	Modular interface board	
Voltage	AC 220V ~ 240V (3.7 ~ 7.5KW)	
	AC 380V ~ 415V (5.5 ~ 15KW)	AC 380V ~ 415V (5.5 ~ 22KW)
Traction Machine	Geared traction machine/Gearless permanent magnet synchronous machine	
Installation	On floor/Hanging	On floor



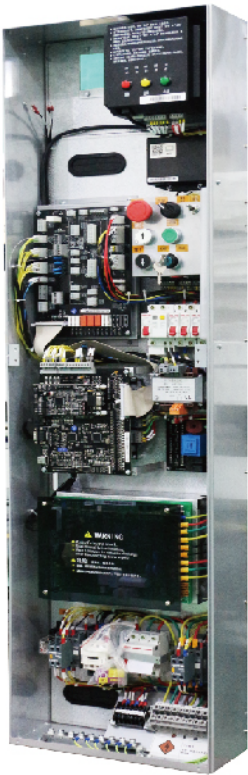


## SJT-WVF5-I Series MRL Ultra-thin Elevator Control Cabinet (suitable for modernization)

### Features

- Adopts the new generation iBL6 integrated controller, it has more complete and intelligent elevator logic control functions, and makes the variable frequency control more efficient.
- Modular components for internal structure. Easy wiring, assembling and repairing.
- Thanks for the simplicity of modular design, the control cabinet can be smaller, lighter and thinner, makes the installation unconventional easy and suitable for almost every application.
- Optimize heat transfer ability and fan control, smart noise reduction, adopts silent contactor to reduce operation noise effectively\*.
- Equipped with emergency rescue device, during emergency situation, system enters rescue operation and professional personals can use the electric brake release buttons on operation panel to make the rescue.
- Satisfy GB7588-2003/2015 safety standard, include UCMP, car door/hall door short circuit detection, bypass and other functions that the new national standard requires.
- Compatible with full range peripheral produces, very feasible. With the assorting modular car top box and car operation panel, the complete system is modular configured, thus highly increase the value for money for an excellent ridding experience.

\* 5.5kw (AC220V~240V), 11kw (AC380V~415V) control cabinets are not applied with silent contactor.



Power	3.7 ~ 11KW	Wiring Connection	Modular interface board
Elevator speed	0.25 ~ 4m/s	Voltage	AC 380V ~ 415V (3.7 ~ 11KW)
Maximum Stops	64 stops		AC 220V ~ 240V (3.7 ~ 5.5KW)
Cabinet Dimension	350 X 145 X 1330mm	Traction Machine	Geared traction machine/Gearless permanent magnet synchronous machine
Controller	iBL6 series integrated controller (M)	Installation	On floor

## Villa Elevator NS05 Separable Control Cabinet (200V/400V)

### Features

#### NS05 Separable Control Cabinet

Is a modular design cabinet especially for villa and home elevators. We understand the installation restrictions of villa elevator projects, thoughtfully, we make the cabinet with the following features to meet your satisfaction:

- Modular components for internal structure. Easy wiring, assembling and repairing.
- Super thin and narrow, cabinet size is only 200\*100\*1145(mm), can fit in villa elevator project with little space.
- Building block type of installation method, the whole cabinet can separate into control cabinet and ARD cabinet. Both cabinets can install individually. This will reduce the control cabinet height to 815mm which can fit into even smaller spaces.
- Modular design makes wiring and commissioning more convenient. Moreover, the cabinet adopts standard modular interface board which is compatible with Bluelight regular modular control cabinet model. So for villa elevator and common passenger elevator can use same wiring cables.
- With advanced control technique, motor cable shorting (star-seal) contactor and run contactor are no longer needed. Meanwhile, using speed control fan makes the cabinet extremely silent during operation. It is very suitable for a quiet family environment.

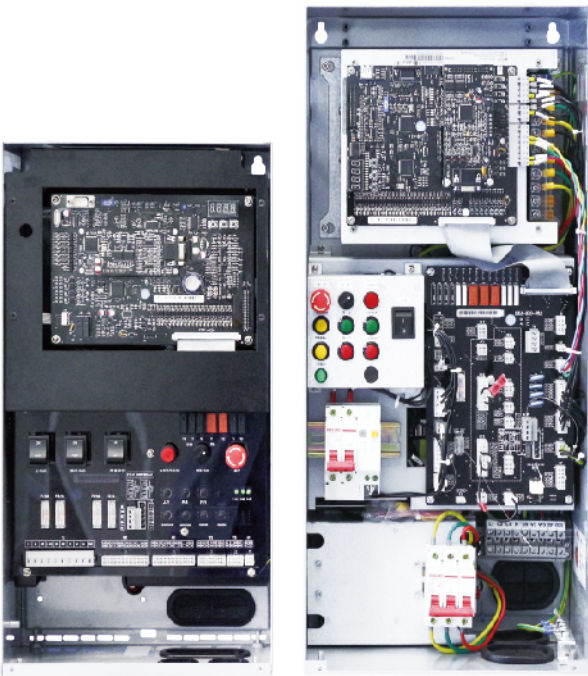
- Featured with portable operation box which has inspection switch, emergency stop, slow run buttons, electric brake release buttons, keypad connector and other useful devices. It also provides multiple circuit bypassing terminals, makes the full commissioning operation achievable remotely even without access to the cabinet which is installed in hoistway.
- The control system is featured with IECS, it is easy for commissioning to get a perfect result. Users can also select TWCR remote monitoring system as option, and make the system even more safe and reliable.

Power	2.2 ~ 5.5KW
Elevator speed	0.1 ~ 1m/s
Maximum Stops	6 stops
Cabinet Dimension	200 X 100 X 1145mm
Controller	iBL6 integrated controller (special design series)
Wiring Connection	Modular interface board
Voltage	AC 220V ~ 240V (2.2 ~ 3.7KW)
	AC 380V ~ 415V (2.2 ~ 5.5KW)
Traction Machine	Geared traction machine/Gearless permanent magnet synchronous machine
Installation	On floor/hanging/separate



## Villa Elevator Integrated Control Cabinet (200V/400V)

Power	2.2KW/3.7KW
Elevator Speed	0.5m/s
Maximum Stops	6 stops
Cabinet Dimension	300 X 170 X 550mm (200Vclass)
	320 X 190 X 650mm (400Vclass)
Controller	iBL6 series integrated controller (M)
Wiring Connection	MIO series modular interface board (200V class)
	KIO series modular interface board (400V class)
Voltage	AC 220V ~ 240V (2.2KW)
	AC 380V ~ 415V (3.7KW)
Traction Machine	Gearless permanent magnet synchronous machine
Installation	On floor/Hanging



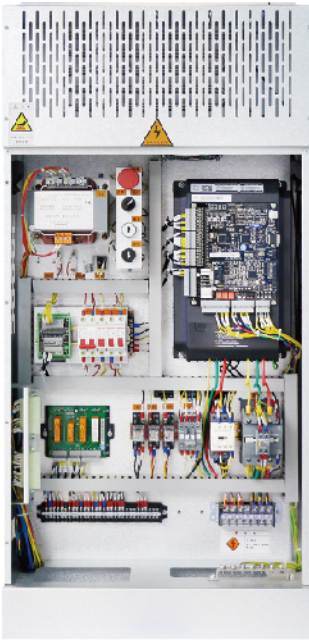
200V

400V



# SJT-WVF5-S/E Series Elevator Integrated Control Cabinet (with machine room)

Power	3.7 ~ 22KW
Elevator Speed	0.25 ~ 4m/s
Maximum Stops	64 stops
Cabinet Dimension	560 X 240 X 1200mm
Controller	iBL6 series integrated controller
Wiring Connection	Plug connector + terminal block
Voltage	AC 220V ~ 240V (3.7 ~ 7.5KW)
	AC 380V ~ 415V (5.5 ~ 22KW)
Traction Machine	Geared traction machine/Gearless permanent magnet synchronous machine
Installation	On floor/Hanging



# SJT-WVF5-S/E Series Elevator Integrated Control Cabinet (machine roomless)

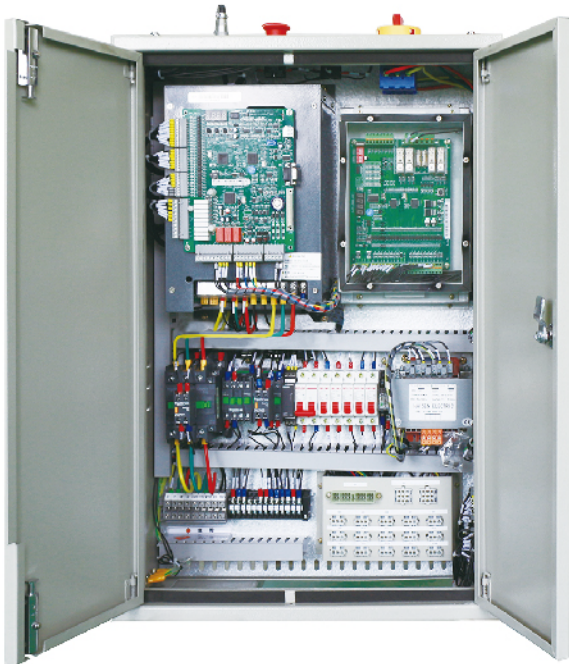
Power	3.7 ~ 15KW
Elevator Speed	0.25 ~ 4m/s
Maximum Stops	64 stops
Cabinet Dimension	230 X 235 X 1300mm
Controller	iBL6 series integrated controller (M)
Wiring Connection	Modular interface board
Voltage	AC 220V ~ 240V (3.7 ~ 7.5KW)
	AC 380V ~ 415V (5.5 ~ 15KW)
Traction Machine	Geared traction machine/Gearless permanent magnet synchronous machine
Installation	On floor



# Escalator Integrated Control Cabinet

## Features

- SJT-WVF5-F Integrated Control Cabinet is the new generation high performance escalator control cabinet designed and manufactured independently by Shenyang BlueLight Automatic Technology. This control cabinet supports all functions for various escalator manufactures needs, and is suitable for automatic escalator and moving walks.
- Perfect combine of logic control and motor drive. Neat and affordable.
- Multiple power saving options.
- Featured with safety controller. Activates protection when Over-speed, Reverse-run and Step-lose. SIL3 safety level.



# Programmable Electronic System in Safety Related Applications for Escalators and Moving Walks (PESSRAE)

**SJT-APE-V2-STD (order number: 4902)**

**SJT-APE-V2-BAS (order number: 4903)**

## Features

- The product is the industry' s first to gain the SIL certificate issued by authority. It also gains the type examination certificate and SIL3 safety certificate, which meets the new national standards.
- Two vehicle-level, international brand CPU which support self-detection and guarantee stable and reliable running.
- German gold-coating four-contact relay to ensure safety
- IP53 level dust-proof and waterproof.



SJT-APE-V2-BAS



SJT-APE-V2-STD

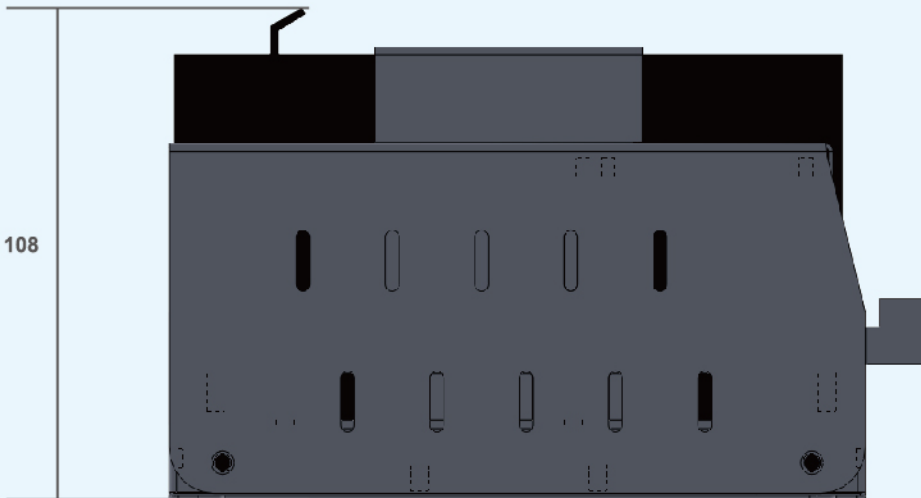


# ELEVATOR EMERGENCY RESCUE DEVICE

## Electric Brake Release Device

### Features

- Feature with emergency power supply port that can provide power to Bluelight VM3 controller main board. During emergency rescue operation, the car sliding direction and speed are displayed on main board LED tubes.
- For control cabinet has no door interlock contactor or emergency stop contactor, the door lock circuit contacts can directly connect to the door lock detection terminal on electric brake release device.
- Battery power output for external door zone indicator and etc.
- Device circuit and battery are separable. Remove the battery and gather it for storage, easy to manage.
- The external battery is easy to inspect error and replace.
- When expecting long term shipment (oversea), device can send without the battery and customer can buy and install the battery locally. This save the battery from damage during transfer and provide customer with feasible battery options.
- The height of device is only 108mm which can fit into ultra-thin control cabinet.



### Model Description

#### SJT - EPB - 110 - PF

SJT	EPB	110	PF
Model Series	Electric Brake Release Product	Open Brake Full Voltage	Power Supply Output Function
		110: 110V	PF: separate body with metal case
			P: integrate body, metal case with power supply output
			N: integrate body, metal case without power supply output
		220: 220V	PN: integrate body, plastic case with power supply output
			NN: integrate body, plastic case without power supply output

### Electric Brake Release Device Specification List

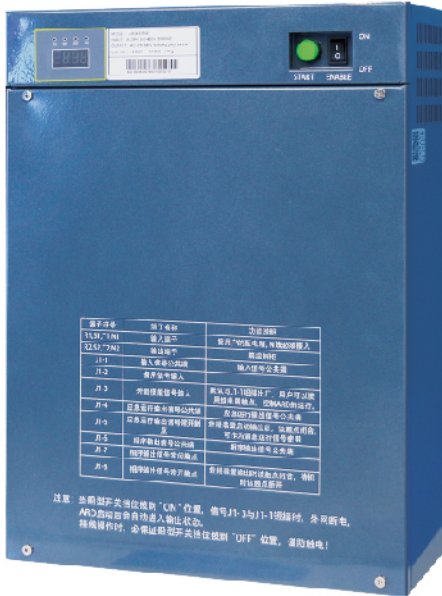
Model		SJT - EPB110P/PF/PN	SJT - EPB220P/PF/PN
		SJT - EPB110N/NF/NN	SJT - EPB220N/NF/NN
Max Adapted Brake Power(W)		450	450
Output	Rated Output Voltage (V)	110	220
	Rated Output Current(A)	4	2
Input	Power Grid Voltage	220V±15%	
	Rated Voltage	12V	
Battery Specifications	Rated Capacity	7AH	
	Constant Current Charge Current	1A	
	Constant Current Charge Time	4h	
	Trickle Current Charge Voltage	13.8V	
	Full Voltage/Open Brake Voltage	110V	220
Control Features	Half Voltage/Holding Brake Voltage	75V	150
	Battery Under-voltage Protect Voltage	10V	
	Single Run Time	5min	
	Output Voltage Ripple Wave	<5%	
	Efficiency	>90%	
	DC5V	Maximum Current 300mA	
	DC13V	Maximum Current 120mA	
	DC5.2V	Maximum Current 100mA	
Protection	Over Current Protection	Protect When Battery Output Current Exceed Limit	
	Under Voltage Protection	Protect When Battery Voltage is under 10 V	
	Short Circuit Protection	Protect When Short Circuit of Open-brake Output	
I/O	Door Zone Input	Automatically stop Open-Brake Output when elevator enter door zone	
	Door Lock Input	Automatically stop Open-Brake Output when door circuit is cut off	
	Button Input	Extra Button Interface, More Flexible	
Environment	Cooling Type	Natural Air Cooling	
	Protection Level	IP20	
	Environment Temperature & Humidity	Below 95%RH, non-condensing -15°C ~ +40°C, well-ventilated	
	Vibration	Beyond 1G while under 20HZ	
	Application	In doors, altitude<1000m, without direct sunlight, dust, corrosive/explosive gases, oil fog, vapor, water dripping, or salty substances	



Automatic Rescue Device (ARD)

Features

- Most advanced technology can support rescue operation longer: advanced direct current boost and full-bridge inverter circuit technology, high conversion efficiency, low power loss and support rescue operation much longer than ordinary.
- Intelligent battery recharge/discharge management to extend battery life: Defined recharging power input circuit for under voltage and over voltage protection; Repeat display recharging battery voltage and capacity in real time, monitoring the battery status all the time; smart automatic switch between constant voltage charging, constant current charging and trickle charging; battery low voltage protection and output under voltage protection effectively prevent battery over discharge and tremendous increase battery life;
- Full modular design for simple application: built-in power source switching functions, no auxiliary circuit is needed, simple connect and use; Fast battery install and remove, easy to replace on site ;
- Available in two output voltage levels: single-phase AC220V and AC380V, users can select accordingly on project.



Model Description

ARD - 4 - S - 15 - A1

ARD	4	S	15	A1
Automatic rescue device	Rescue output voltage level	Voltage Type	Maximum Adaptable Machine Power	Product Model
	4: 380V class	T: three-phase AC output, with three-phase 380V grid input	03: 3.7kW And below	A1: regular type
		S: single-phase AC output, with three-phase 380V grid input	05: 5.5kW And below	
	2: 220V class	D: single-phase AC output, with three-phase 220V grid input	15: 15kW And below	B1: power enhance type
		E: single-phase AC output, with single-phase 220V grid input	30: 30kW And below	
			37: 37kW And below	N1: no battery (prepared by user)



Specification List

Model	Voltage type	S	ARD2S03X	ARD2S05X	ARD2S15X	ARD2S30X	ARD2S37X
			ARD4S03X	ARD4S05X	ARD4S15X	ARD4S30X	ARD4S37X
		D	ARD2D03X	ARD2D05X	ARD2D15X	ARD2D30X	ARD2D37X
			E	ARD2E03X	ARD2E05X	ARD2E15X	ARD2E30X
	Product type	A1	Normal Type				
		B1	Enhanced Type				
N1		No Batteries Type (Self-prepare)					
Maximum Adaptable Machine Power(kW)			3.7	5.5	15	30	37
A1 Type Maximum Adaptable Elevator Load(kg)			450	1150	1150	1150	1600
B1 Type Maximum Adaptable Elevator Load(kg)			630	1350	1350	1350	2000
Output	Rescue Rated Output Voltage(V)		Voltage type S: AC220/380V, 50/60Hz				
			Voltage type D: AC220V, 50/60Hz				
	A1 Type Rescue Rated Output Capacity(kVA)		0.3	0.6	0.6	0.6	1.3
	B1 Type Rescue Rated Output Capacity(kVA)		0.4	0.7	0.7	0.7	1.5
	Output Current (Non-Rescue State) (A)		18	18	32	60	80
Input	Net Voltage		Voltage type S: 3-ph AC 340 ~ 420V				
			Voltage type D: 3-ph AC 185 ~ 240V				
			Voltage type D: 1-ph AC 185 ~ 240V				
	Net Frequency		50/60Hz				
Battery Characteristics	Battery Type		Rechargeable Sealed Lead-Acid Battery				
	Rated Voltage		DC24V (12V×2)	DC36V (12V×3)	DC36V (12V×3)	DC36V (12V×3)	DC72V (12V×6)
	Rated Capacity (A1 Type)		7AH×2	7AH×3	7AH×3	7AH×3	7AH×6
	Rated Capacity (B1 Type)		9AHx2	9AHx3	9AHx3	9AHx3	9AHx6
Control Features	Recommended Elevator Rescue Speed		1/12 Elevator rated running speed				
	Single Running Duration		5min				
	Output Voltage Wave		Sine Wave				
	Efficiency		>90%				
Protection	Over current protection		Protect when rescue output current exceed limit value				
	Under voltage protection		Protect when battery voltage lower than threshold value				
	Short circuit protection		Protect when rescue device has output short circuit				
	Over heat protection		Invert circuit overheat protection				
Auxiliary Terminal	Enable signal input		Rescue device enable input				
	Programmable signal input		1 channel programmable signal input				
	Emergency signal output		Rescue device operating signal output				
	Programmable signal output		1 channel programmable signal output				
Ambience	Cooling Mode		Air cooling / Forced air cooling				
	Protection Class		IP20				
	Ambient Temperature & Humidity		Ambient humidity below 90%RH (No condensation) -15 ~ 40℃, well ventilated				
	Vibration Degree		>1G below 20Hz				



# ELEVATOR CONTROL BOARD

## Bluelight 7-inch True-color Display with Voice Announcer

**BL2000-HEH-M7 (order number:39002)**

### Bluelight 7-inch True-color Display with Voice Announcer

It displays information including current floor, running direction, date and time, special states (inspection, fire, etc.). It has built-in voice module and features with full functions of voice announcer

#### Features

- Available in horizontal and vertical display, Chinese and English language, both can change in setting menu.
- With built-in speaker and features with voice announcer functions, can play background music, greeting words, "Ding Dong" sounds, floor announcing, floor states such as fire, overload and others;
- Can repeat display background pictures (5 pictures of BMP file type, repeat display). Customer LOGO, date, week displays can set by buttons, very fast operations.
- 128MB memory space, can upload pictures using a USB drive, simple way to change display content.



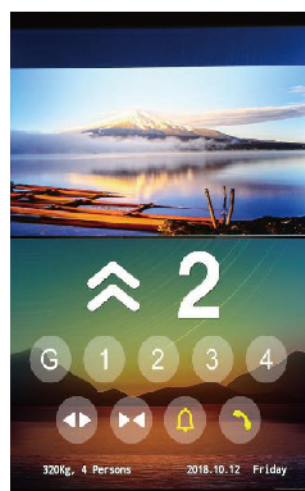
## Bluelight 10.4-inch Touch Screen Operation Panel

### Bluelight 10.4-inch Touch Screen Operation Panel (model: SJT-ETOUCH-104-LG)

The up-part features car display functions with customize pictures; the under-part contains car call buttons. Available in maximum 10 buttons including floor selections and functional keys.

#### Features

- Functional keys including: open door, close door, close door delay, alarm, intercom; Close door delay, alarm and intercom can set to not display for total 8 stops buildings.
- Floor key display can set on location, available in 3-digit (example 12A).
- Two channels independent relay normal open output to control intercom and alarm buttons;
- Adopt 485 communication interface, compatible with CAN-232/485 protocol translate board, can apply for all Bluelight general protocol/special protocol control systems.



## TFT True-Colour LCD Landing Call Board

### The TFT LCD display is equipped with 24-bit true-color screen

High performance processor, large memory SDRAM and NANDFLASH. In addition to the regular elevator display functions, it is also featured with time and date display as well as pictures and advertisements.

#### Features

- Elevator Running State Display: elevator moving direction, stops floor (1~3 digits), characters "- ", "0-9" and "A-Z" .
- Horizontal and vertical display options.
- Up and down landing calls register and answering indication, with calling button stuck detecting functions.
- Changeable background picture to display photos and advertisements as desired.
- Automatically switch off when the elevator is locked.
- Display elevator states (Inspection, Fire, Overload, etc.) in both English and Chinese.

#### Specifications

- Powered by ADSTAR processor, operation frequency is 108MHZ
- 24-bit color range TFT LCD screen. The series have screen sizes of 4.3-inch, 5.6-inch and 8-inch.
- Large memory NANDFLASH to store pictures. High speed SDRAM to boost display quality.
- CAN BUS communication, fully compatible with Bluelight Serial Communication systems.

### 5.6-inch TFT True-Color LCD Screen BL2000-HEH-M2.3 (order number:30302)

#### Features

- Multiple background pictures repeat display, users can upload pictures by simple operations.
- 5.6-inch 24-bit TFT LCD Screen.
- 1024M-bit NANDFLASH and 128M-bit SDRAM.



### 8-inch TFT True-Color LCD Screen BL2000-MBQ-V4.1 (order number: 30303)

#### Features

- Background pictures repeating display. Users can upload pictures and set the number of displaying pictures by simple operations.
- 8-inch 24-bit TFT LCD Screen.
- 1024M-bit NANDFLASH and 128M-bit SDRAM



### 4.3-inch TFT LCD Screen BL2000-HEH-L4 (order number:30301)

#### Features

- Multiple background pictures repeat display, users can upload pictures by simple operations.
- 4.3-inch 24-bit TFT LCD Screen.
- 1024M-bit NANDFLASH and 128M-bit SDRAM.



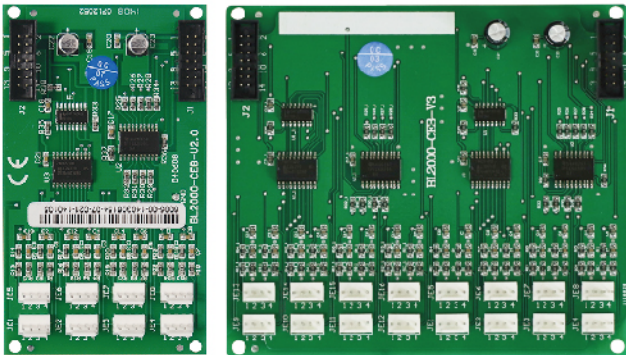


## Elevator Car Call Extension Board

### BL2000-CEB-V2 (order number: 6005)

### BL2000-CEB-V3 (order number: 6009)

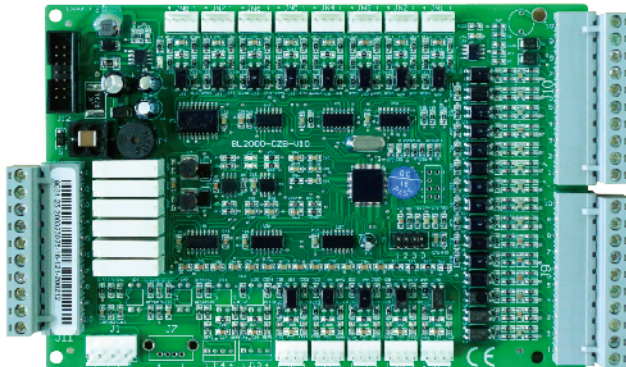
- Application Scope: simplex, duplex and group control (with group control board)
- Applicable Elevators: passenger elevators, freight elevators, bed elevators, residential elevators, panoramic elevators
- Stops: <64
- Floor extension for car call and register. Can interconnect of the Car Board and one another Car Call Extension Board. Cooperates with Bluelight Car Communication Board or Car Command Board.



## Elevator Serial Communication Car Call Board

### BL2000-CZB-V10 (order number: 8030)

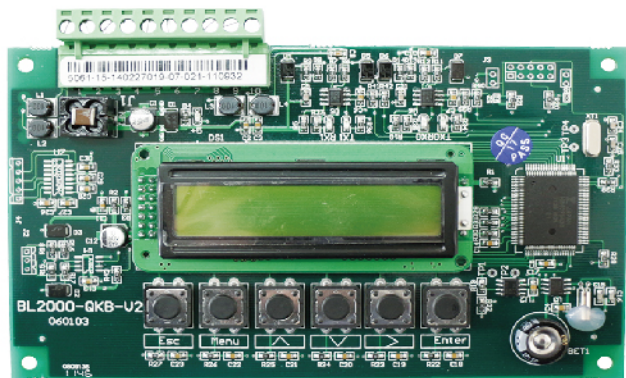
- Application Scope: simplex, duplex and group control (with a group control board)
- Applicable Elevators: passenger elevators, freight elevators, bed elevators, residential elevators, panoramic elevators
- Stops: <64
- Collects information such as car call input signals, open/close door signals, door state data, weighting device data and maintenance box data.
- Outputs the door control signals and called floors register indications.



## Elevator Group Control Board

### BL2000-QKB-V2 (order number: 5061)

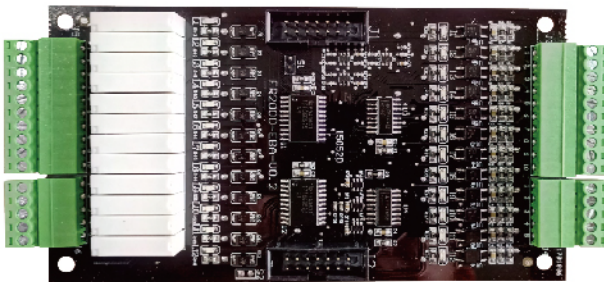
- Imple Configuration: only one group control board is needed for a set of group elevators. CAN BUS communication.
- Max. number of elevators: 8
- Max. stops: 64
- Balanced Running Mode: optimal elevators allocation to minimize users' waiting time. Elevators response fast and appropriate.
- Peak Hour Mode: Satisfy elevator demands in peak hours for public places such as office buildings.
- Idle Running Mode: evenly distribute elevators at designated floors in idle time to minimize the reaction time of answering landing calls.
- Automatic Removal of Reluctant Elevator: when the calling elevator is currently occupied, automatic arrange another elevator to respond, fast react to landing calls.



## Parallel Car Call Extension Board

### FR2000-EBA-V0.2 (order number: 6019)

- Application Scope: Parallel Integrated Controller, Parallel Control Main Board
- Applicable Elevators: passenger elevators, freight elevators
- Stops: <12



## Ultra-Thin Calling Board

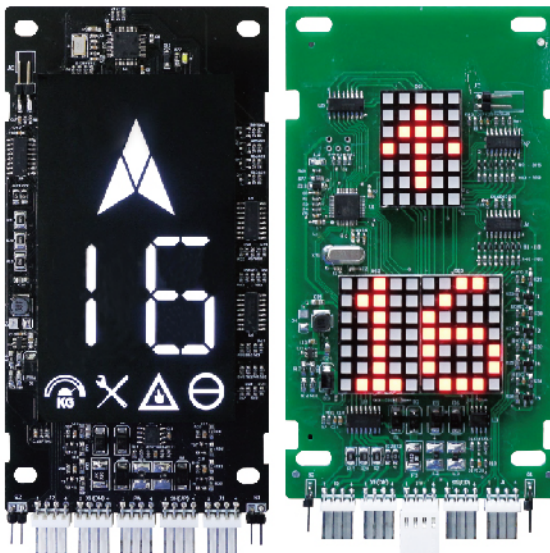
### BL2000-HEH-N4 Series

- PCB Size: 134mm X 72mm X 7.5mm
- Display Type: Segmental
- Display Colour: White on Black

Bluelight latest product. High display quality and long-lasting time.

### BL2000-HAH-N6 Series

- PCB Size: 134mm X 76mm X 7.5mm
- Display Type: Dot-Matrix
- Display Colour:
  1. BL2000-HAH-N6.X-A1 Red Round Dot-Matrix (special order)
  2. BL2000-HAH-N6.X-B1 Orange Round Dot-Matrix (special order)
  3. BL2000-HAH-N6.X-A2 Red Square Dot-Matrix
  4. BL2000-HAH-N6.X-B2 Orange Square Dot-Matrix (special order)



BL2000-HEH-N4.3

BL2000-HAH-N6

## Segmental LED Display/Hall-Call Board

### BL2000-HEH-Q1-A (order number: 30091)

### BL2000-HEH-Q1-B (order number: 30511)

- PCB Size: 136mm X 154mm X 13.5mm
- Display Type: Horizontal
- Display Colour:
  1. BL2000-HEH-Q1-A White on Blue
  2. BL2000-HEH-Q1-B White on Black



BL2000-HEH-Q1

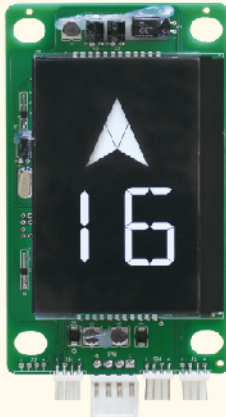


**BL2000-HEH-P1-A (order number: 30090)**  
**BL2000-HEH-P1-B (order number: 30512)**

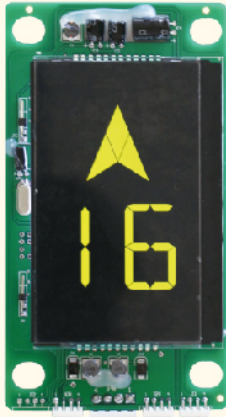
- PCB Size: 176mm X 126mm X 13.5mm
- Display Type: Vertical
- Display Colour:
  1. BL2000-HEH-P1-A White on Blue
  2. BL2000-HEH-P1-B White on Black



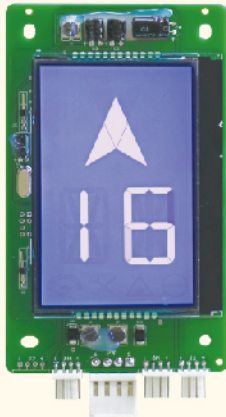
**BL2000-HEH-P1**



**BL2000-HEH-N2.1-B**  
**(order number: 30077)**

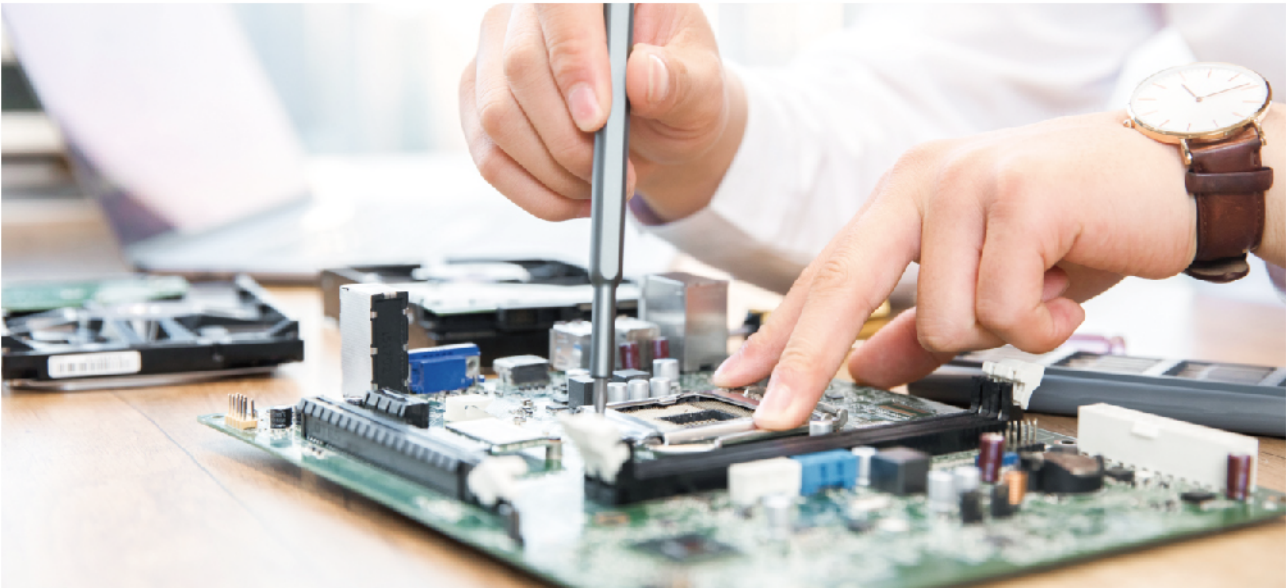


**BL2000-HEH-N2.1-C**  
**(order number: 30078)**



**BL2000-HEH-N2.1-A**  
**(order number: 30076)**

PCB dimensions: 140 X 76 X 13.5mm      Installation plate dimensions: 143 X 79 X 13mm

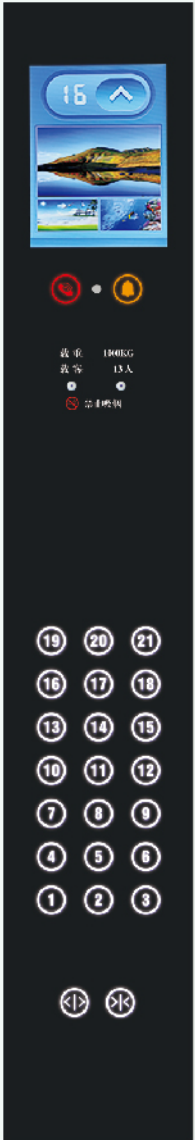


# ELEVATOR ACCESSORIES

## Touch-sensitive Car Operation Panel

### Features

- Touch-button type car call and door open/close input.
- Door open and delay function (optional).
- Touch-button settings: button panel address, button location, answering LED display method.
- Features bell alarming function, elevator quintuple intercom system, built-in inspection box.
- Car Call Register Indication: after a car call is made, system responses with changing the LED color of the select touch button to indicate the car call is successfully registered. The LED will change its color back to normal after the car reaches destination floor and complete the car call.
- Optional 5.6-inch screen (horizontal display) and 8-inch screen (vertical display), real-time display elevator running state such as moving direction, current floor, and elevator mode (Inspection, Fire, etc.).
- IC card function (optional).

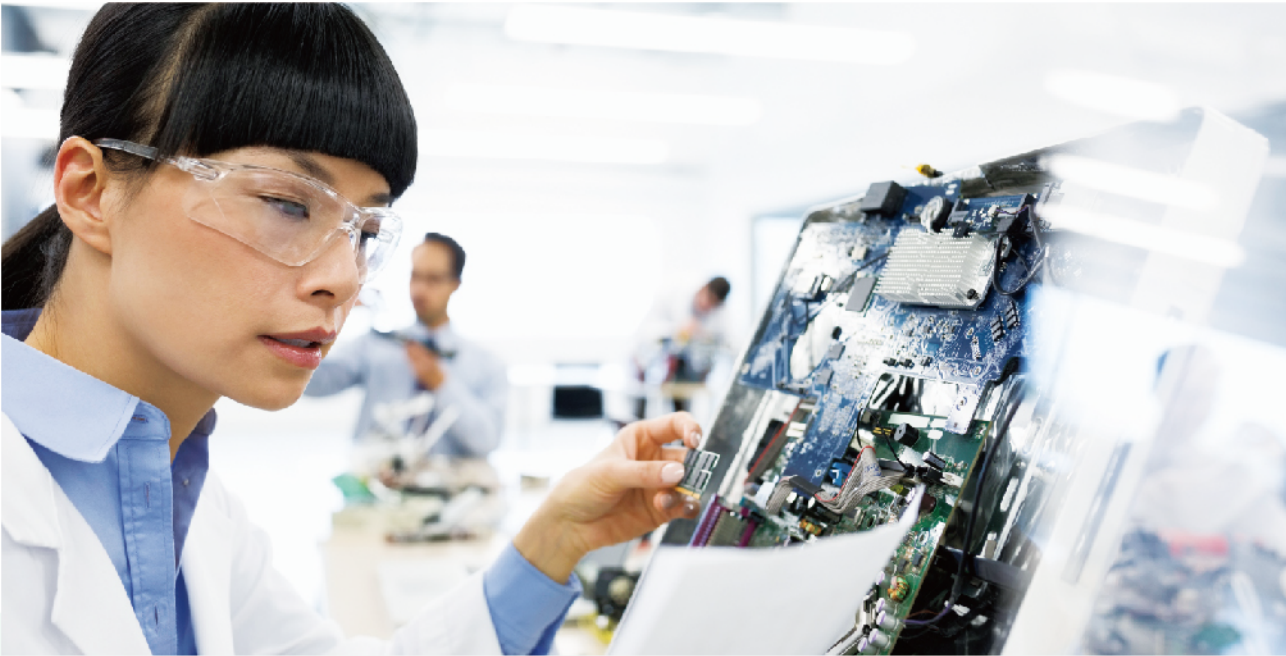


**SJT-CCZP Series Touch-sensitive Car operation panel**

### Performance Index

Input Voltage	24V (DC)
Temperature	-20 ~ 60°C
Waterproof	Prevent the effect from moisture, dew, spray and wet hand. Protect system safety and stability.
Oil Proof Dust-proof	Oil and dust proof: effectively protect panel from greasy dirt and hall call box from getting in dust. Protect system safety and stability.
EMC	National Standard ESD, Group Impulse and EMI tested etc.
Application Scope	5.6-inch screen model supports up to 36 car call buttons, 8-inch screen model supports up to 30 car call buttons
Customization	custom-made logo
Mounting Size	1122 X 175 X 73mm





## Touch-sensitive Landing Call Box

### Features

- Capacitor touch key type landing-call UP and DOWN buttons, with built-in LED response light.
- Car moving direction and current floor display
- Elevator locker. Special mode indication (Overload, Fire, Inspection, Stop).



### Performance Index

Input Voltage	24V (DC)
Temperature	-20 ~ 60°C
Waterproof	Prevent the effect from moisture, dew, spry and wet hand. Protect system safety and stability.
Oil Proof Dust-proof	Oil and dust roof: effectively protect panel from greasy dirt and hall call box from getting in dust. Protect system safety and stability.
EMC	National Standard ESD, Group Impulse and EMI tested etc.
Mounting Size	375 X 86 X 20mm

## XS457 Landing Call Box

### Features

- Size: 326mm X 90mm X 12.4mm
- Suitable with BL2000-HEH-N4.3 Display Board and above version, BL2000-HAH-N6.1 Display Board and above version
- Display type: Segment (vertical) display, dot-matrix (vertical) display
- Texture: Hairline finish, mirror finish;
- Features: 1. styling look; 2. Flat backing, easy installation.



## Vibration & Noise Tester

### SJT-VNT-V0 (order number: 5088)

### Features

- Measure vibrations in X, Y, Z axis direction and the axial accelerations.
- Automatic compute elevator moving distance.
- Automatic compute maximum running noise.
- Automatic plot and display real-time elevator vibration curve, acceleration curve, velocity curve and displacement curve.
- Built-in Bluetooth wireless communication module.
- Elevator data can be uploaded online and store, manage on Cloud.
- Automatic calculate A95 values of elevator vibration speed and acceleration.



## Wireless LAN Remote Elevator Monitoring System

### Terminal Data Collect Device SJT-WZB-V0 (order number: 6060) DTU Data Upload Device SJT-WDU-G1 (order number: 6050)

### Features

- Support multiple elevators monitoring, error alarming and message pushing functions.
- Unique directional antenna communication design, enhance the signal strength and transfer capability.
- Fast installation, easy tuning and maintenance.
- Professional EMC Lab tested, high level electromagnetic interference proof ability.





## Bluelight T Series Remote Monitoring System

## Bluelight T Series Remote Monitoring System, so called TWCR

Is a remote monitoring device combines with phone calling function. It has all functions of Bluelight intelligent elevator IECS remote monitoring module (note). What's more, it has one button calling function.

**Users will prepare a SIM card and save 5 emergency contact numbers in it. In breaking event, passenger only need to press and hold the calling button for 1 second, then system will make the call on these numbers in order automatically, until it is answered.**

## Features

- ◎ SIM card: support voice call and GPRS network. Users can select the SIM card (standard SIM card 25X15mm) and packages from local telecommunication company, and manage the payment on their own to avoid stopping service by other parties.
- ◎ Call out: press and hold the calling button for 1 second, system will make the call automatically according to the number list until a call is answered. Each call can last for 20 minutes unless the other side hang up or automatic hang up if over 20 minutes.
- ◎ Answer: no operation needed, automatic answer the phone when calling in.
- ◎ Call in: to prevent trash number calling and jam the line, system only allow calls from the saved 5 numbers.

**Note:** Remote monitoring module (WCR), users can log on Bluelight Intelligent Elevator Core System (IECS) platform to monitor elevator basic information, current state, running parameters, remote control, statistic analysis and fault records. Moreover, it has failure message warning, remote parameters checking, commissioning guidance and many more functions.



## Intelligent IC Card Management System

## Features

- ◎ Different IC card class level allows accessibility to different floors.
- ◎ Visitor recognize function.
- ◎ Support non-contact read/write, makes the IC card more reliable to use.
- ◎ Set working time and times to achieve whole building control or only selected floors control.
- ◎ Manage IC card issue, lost report, sign off and authorization.
- ◎ Inquire IC card issuance information, payment history and usage records.
- ◎ Compatible with door access control card. One card with multiply functions.



## ACR110U IC Card Writer



## IC Card Control System BL2000-CIC-V4.1

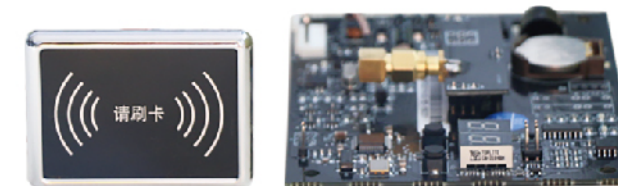
## Bluelight Elevator IC Card Control System (Separate Antenna)

## Bluelight Elevator IC Card Control System (model: BL2000-CIC-V4.1-TF)

Separates the signal receiving antenna plate from control circuit board, and connects them by a 1 meter radio frequency cable. For installation, only need to drill a hole on the car operation panel and fix the antenna by thread. So, there is no space limitation on the control board, it can put into any place as desire. This will save the car operation panel from brutally cut open and avoid further repair.

## Features

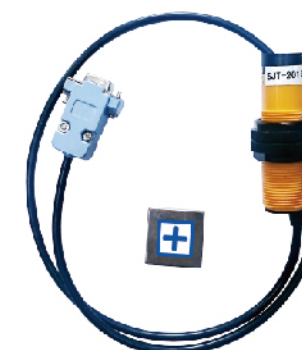
- ◎ Anti-copy Function: Rolling code prevents from copying. Copy card is invalid.
- ◎ Report lost card/ disabled card: To register any specified IC cards which are lost or disabled.
- ◎ Cancel card lost or disabled stats: To recover any specified IC cards which have been previously registered as lost or disabled.
- ◎ Elevator access permission control: To configure owners access permission optionally.
- ◎ Time limit and count limit of usage control: To control the time of usage and number of usage times freely.
- ◎ Enable IC card control on random floor: To configure the floors accessibility with IC card randomly by activating each floor IC card function.
- ◎ Data management: To view information and records of distributed IC cards; to view payment information and payment record.
- ◎ Control data management: To read the information from IC Card controller such as lost or disabled IC cards, IC Card usages and to calibrate time and date.



## Weighting Device

**Model: SJT-151/201**

- ◎ Size: 90 X 60 X 35mm
- ◎ Weight: 200g
- ◎ Cylinder Structure, light & small, easy installation.
- ◎ SJT-151: 485 communication, installed under car bottom, non-contact installation.
- ◎ SJT-201: CAN communication, installed at rope end or under car bottom, non-contact installation.
- ◎ Convert the deformation of car bottom or rope end into electrical signals, then send to control board as load value feedback.



**Model: SJT-102**

## 1. Functioning

- Refer to the deformation of car bottom or rope end to output full load and overload signals.

## 2. Features

- ◎ Size: 86.4 X 34mm;
- ◎ Untouched magnetic induction working mode, no change of cabin structure or rope end.
- ◎ Highly sensible for stable and reliable result.
- ◎ Two channels for full load and overload outputs (OC output).

### 3. Application

- ⊙ Car bottom with deformation (car bottom install) or rope spring (rope end install).

